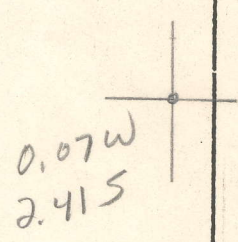


LATITUDE $38^{\circ}47'30''$

LONGITUDE $110^{\circ}01'08''$



7.5 OGIS topo location

7.5' loc _____ 15' loc _____
 _____ (calc.) _____

Company _____

Farm _____

Quad Arnoldsburg 7 1/2

County Calhoun

District Lee

WELL LOCATION MAP

File No. 013-244

designed, hereby certify that I have read and believe all the information to be true and correct, required by the title of the Mining Laws of West Virginia.

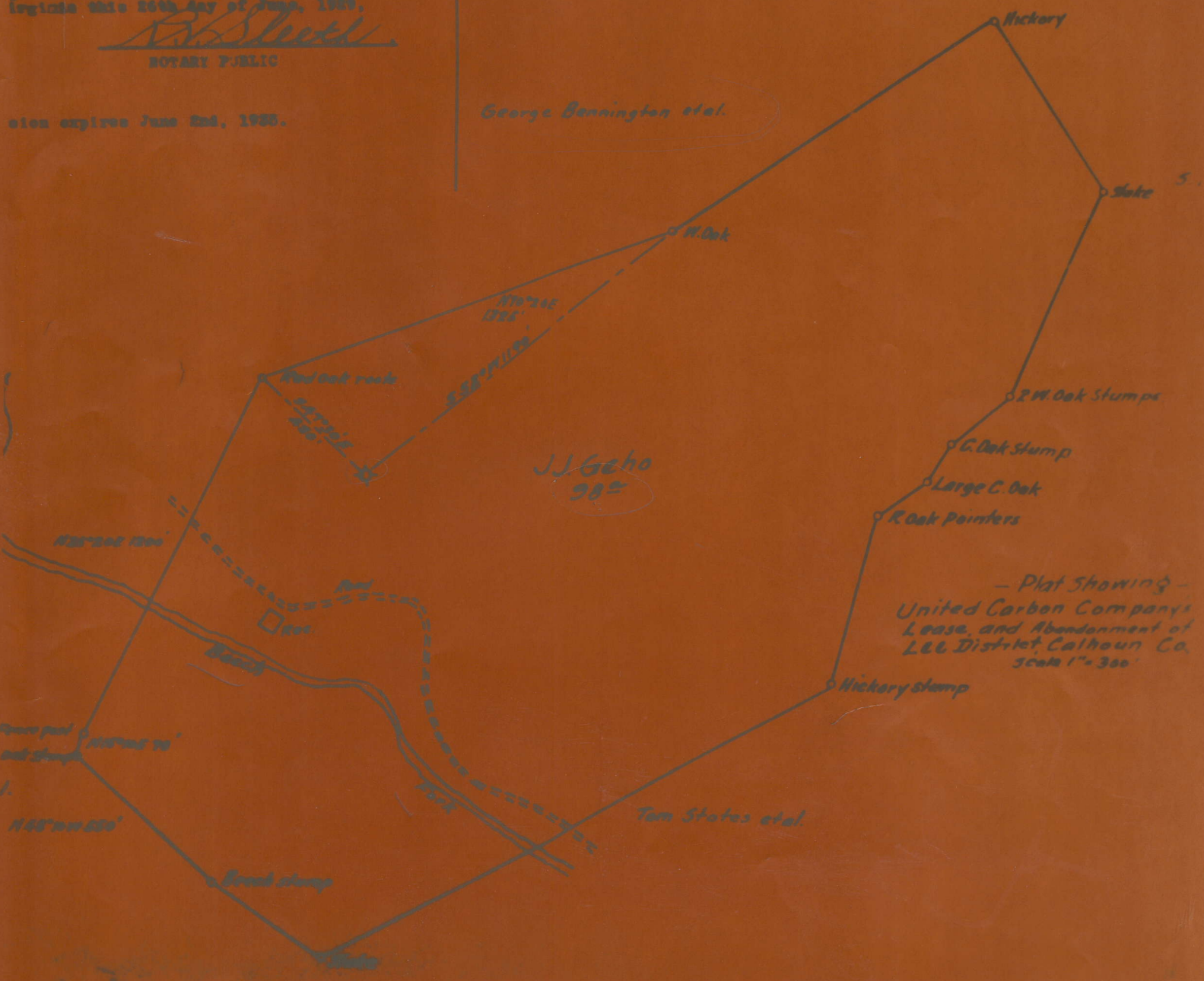
H.C. Pearson
 WEST VIRGINIA REGISTERED ENGINEER #12

and before me a Notary Public of Kanawha County, West Virginia this 26th day of June, 1933,

B.S. Steele
 NOTARY PUBLIC

My commission expires June 2nd, 1935.

George Bennington et al.



- Plat showing -
 United Carbon Company's
 Lease, and Abandonment of
 L&C District, Calhoun Co.
 Scale 1" = 300'

Tom States et al.

GEHO, J. J., NO. 1.

Cal-1-A.

By United Carbon Co.

Lee Dist.

(TO LOCATION)
(TO ...)

Now Eula Hall

CNG 1 F-7046