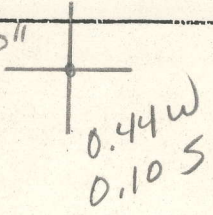


LATITUDE 38°55'00"



00,01,18 LONGITUDE

7'5 OGIS topo location

7.5' loc _____ 15' loc _____
 _____ (calc.) _____

Company _____

Farm _____

Quad Annamouah 7 1/2'

County Calhoun

District Center

WELL LOCATION MAP

File No. 013-2A

SOUTH PENE OIL COMPANY

PROPOSED ABANDONMENT: W. A. Bryner

well No. 2

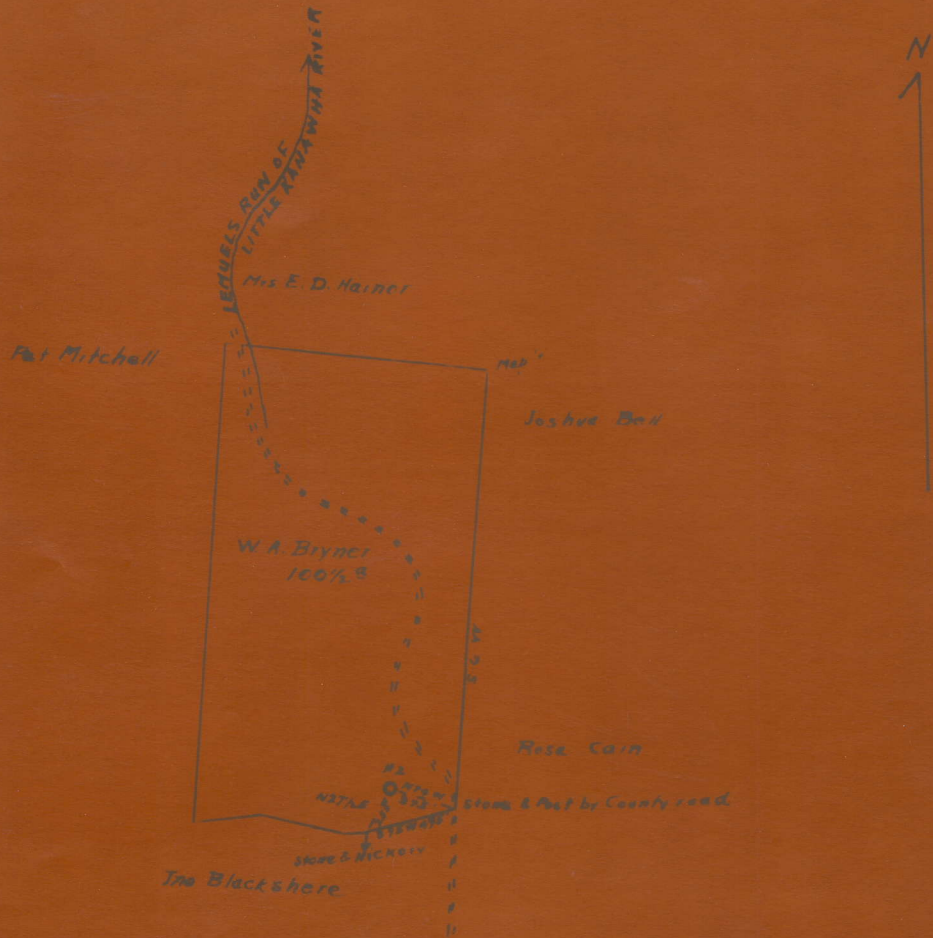
Lease No. 64914 - 100 $\frac{1}{2}$ acres, Center District, Calhoun County, West Virginia

Lemuel Run of Little Kanawha River

S. 37 W. 31

Scale 1 inch = 800'

Elevation 1046



I, the undersigned hereby certify that this map is true and correct, and shows all the information required by Oil & Gas Law, acts of 1929.

South Pene

BRYNER, W. A., NO. 2.

Cal-2-A.

By South Penn Oil Co.

Center Dist.