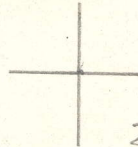


LATITUDE 39° 00'



3.43W  
3.34S

150° 18' LONGITUDE

7'5 OGIS topo location

7.5' loc \_\_\_\_\_ 15' loc \_\_\_\_\_  
 \_\_\_\_\_ (calc.) \_\_\_\_\_

Company \_\_\_\_\_

Farm \_\_\_\_\_

Quad Annoldsburg (NC)

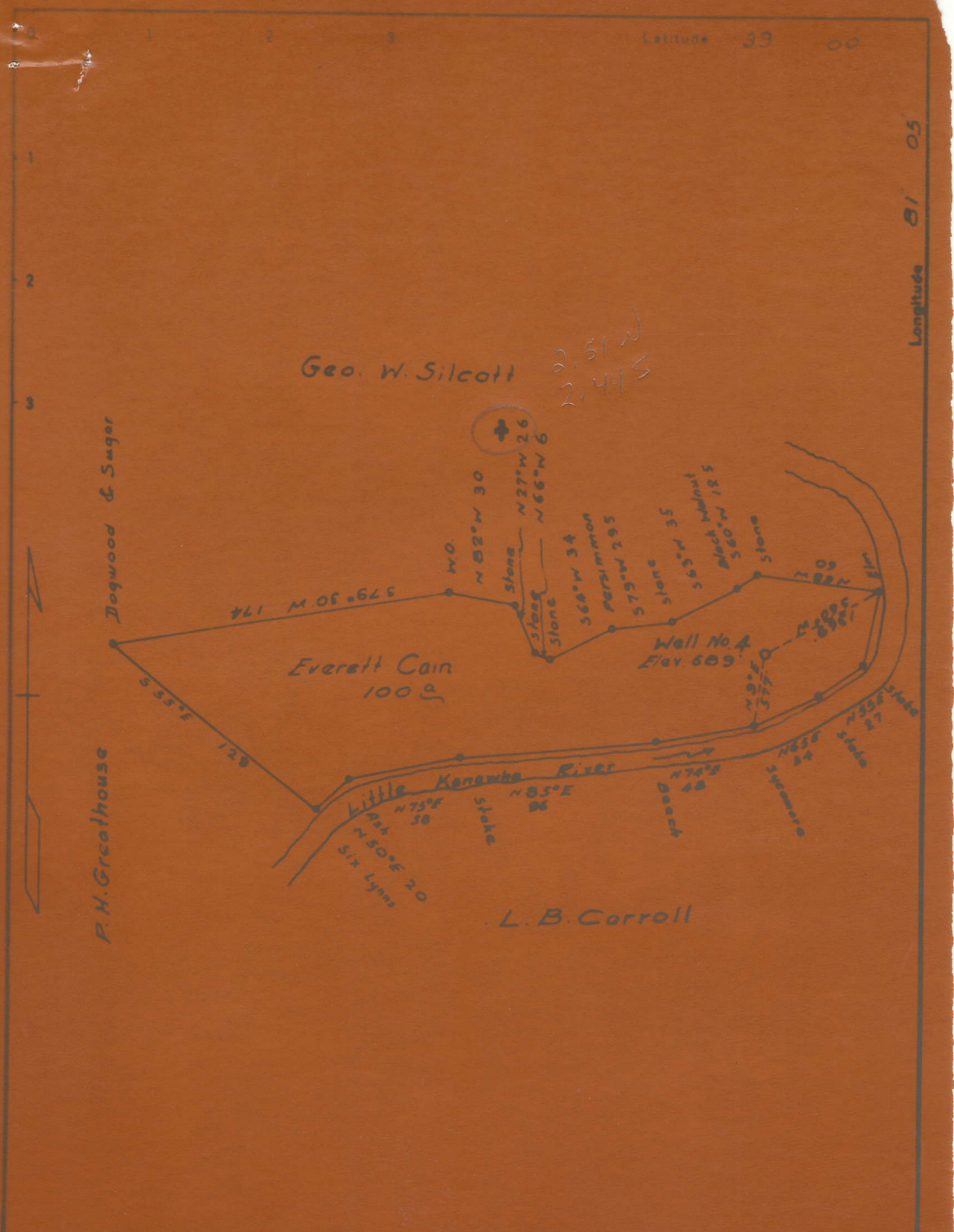
County Cathoun

District Sheidan

WELL LOCATION MAP

File No. 013-73A





Company L.B. Carroll  
 Address Big Bend W. Va.  
 Farm Everett Cain

STATE OF WEST VIRGINIA  
 DEPARTMENT OF MINES  
 OIL AND GAS DIVISION  
 CHARLESTON



Sheridan District, Calhoun County, W. Va.

By L. B. Carroll, Big Bend, W. Va.

On 111 acres, surface and minerals owned by Everett Cain,  
 Big Bend, W. Va.

CAL-73-A

NO LOCATION  
 FOUND

Drilled in 1928.

Elevation, 689' L.

13" casing, 60'; 10", 314'; 8 1/4", 840'; 6 5/8", 1594'.

All casing removed ~~and replaced~~ except the 6 5/8".

Steel casing shoe on bottom of 6 5/8" casing. No perforations.

No coal was encountered. No liner used.

Abandonment reported to Dept. of Mines Sept. 7, 1936.

Record to RCT from D. G. Courtney, Dept. of Mines, 5-5-37.

Producing hole.

	Top.	Bottom.	Thickness.
Big Dunkard Sand	830	- 880	50
Second Salt Sand	1270	- 1355	85
Maxton Sand	1360	- 1545	185
Little Lime	1545	- 1562	17
Slate	1562	- 1567	5
Big Lime	1567	- 1647	80
Big Injun Sand	1647	- 1712	65
Total depth		1712	

39° 00' x 81° 05'