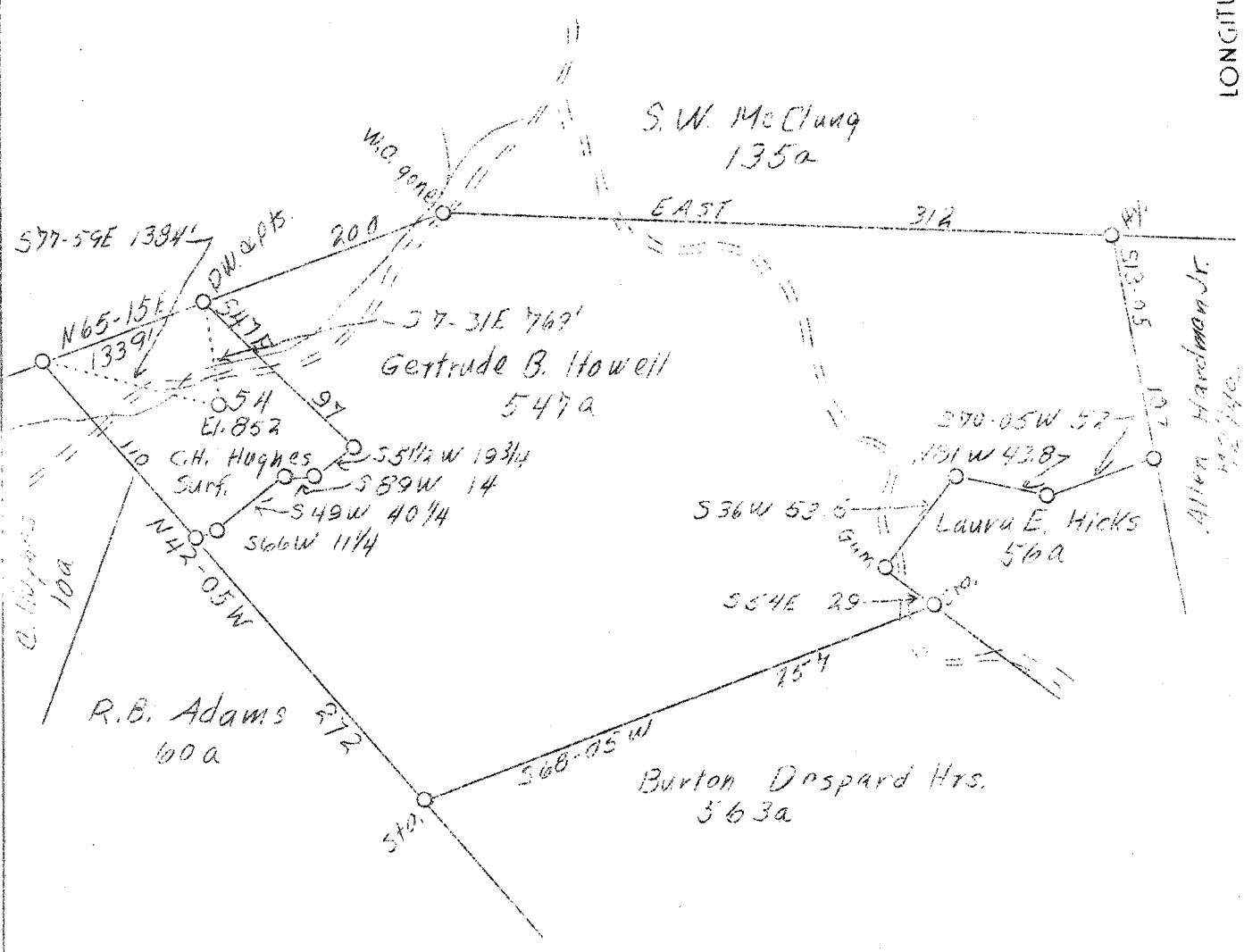


M

LATITUDE 38°55'

LONGITUDE 81°0'



W - 55  
S - 1.72

ABD.

FB. 648 P 21 54.23-33 538 W32

Company	Hope Const. & Ref. Co.	STATE OF WEST VIRGINIA
Address	Clarksburg, W. Va.	Department of Mines
Farm	Gertrude B. Howell	OIL AND GAS DIVISION
Acres.	547	Charleston
Lessee No.	17984	
Serial No.	C - 54	WELL LOCATION MAP
El. (Spirit Level)	852	File No. <u>Cat-96-A</u>
Quadrangle	Arnoldsburg W1C	
County	Calhoun	x Denotes location of well on U.S. Topo-
District	Lee	graphic Maps, scale 1 to 62,500, latitude
Eng.	T.M. Bowers	and longitude lines being represented by
Eng. Reg. No.	900	border lines as shown.
Date	12/1/38	- Denotes one inch spaces on border line
Scale	1" - 80 Po.	of original tracing.

STATE OF WEST VIRGINIA  
DEPARTMENT OF MINES  
OIL AND GAS DIVISION

234

WELL RECORD

Permit No. AP-96-A

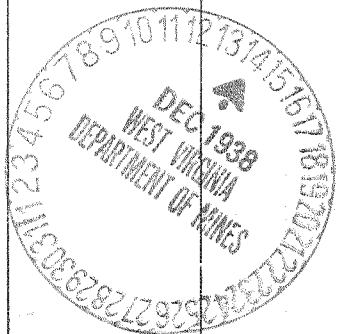
Oil or Gas Well Oil  
(Kind)

Company Hope Construction & Refining Company  
Address Clarksburg, W. Va.  
Farm Gertrude B. Howell Acres 547  
Location (waters) Rowell's Run  
Well No. 54 Elev. 852  
District Lee County Calhoun  
The surface of tract is owned in fee by C. H. Hughes  
Address Joker, W. Va.  
Mineral rights are owned by \_\_\_\_\_  
Address \_\_\_\_\_  
Drilling commenced 7-15-1919  
Drilling completed 9-17-1919  
Date shot 10-2-1919 Depth of shot 1930-1937  
Open Flow /10ths Water in \_\_\_\_\_ Inch  
/10ths Merc. in \_\_\_\_\_ Inch  
Volume \_\_\_\_\_ Cu. Ft.  
Rock Pressure \_\_\_\_\_ lbs. \_\_\_\_\_ hrs.  
Oil \_\_\_\_\_ bbls., 1st 24 hrs.  
Fresh water None recorded feet \_\_\_\_\_ feet  
Salt water 1130 feet \_\_\_\_\_ feet

Casing and Tubing	Used in Drilling	Left in Well	Packers
Size			Kind of Packer
16			
13			
10	249	Pulled	Size of
8 1/4	1100	1100	Depth set
6 5/8	1902	1902	
5 3/16			Perf. top
3			Perf. bottom
2	1957	1957	
Liners Used			Perf. top
			Perf. bottom

CASING CEMENTED \_\_\_\_\_ SIZE \_\_\_\_\_ No. FT. \_\_\_\_\_ Date \_\_\_\_\_  
**Not cemented**  
COAL WAS ENCOUNTERED AT \_\_\_\_\_ FEET \_\_\_\_\_ INCHES  
\_\_\_\_\_ FEET No coal INCHES \_\_\_\_\_ FEET \_\_\_\_\_ INCHES  
\_\_\_\_\_ FEET \_\_\_\_\_ INCHES \_\_\_\_\_ FEET \_\_\_\_\_ INCHES

Formation	Color	Hard or Soft	Top	Bottom	Oil Gas or Water	Depth Found	Remarks
Big Dunkard Sand			920	984			
Gas Sand			1030	1060			
First Salt Sand			1080	1230	Water	1130	
Second Salt Sand			1577	1715	Show Gas	1597	
Maxon Sand			1715	1740			
Little Lime			1750	1780			
Pencil Cave			1780	1797			
Big Lime			1797	1890			
Big Injun Sand			1890	1914	Small Gas	1894	
Squaw Sand			1927	1944	Oil	1931-1937	
Total Depth				1957			



JAN 16 1939

