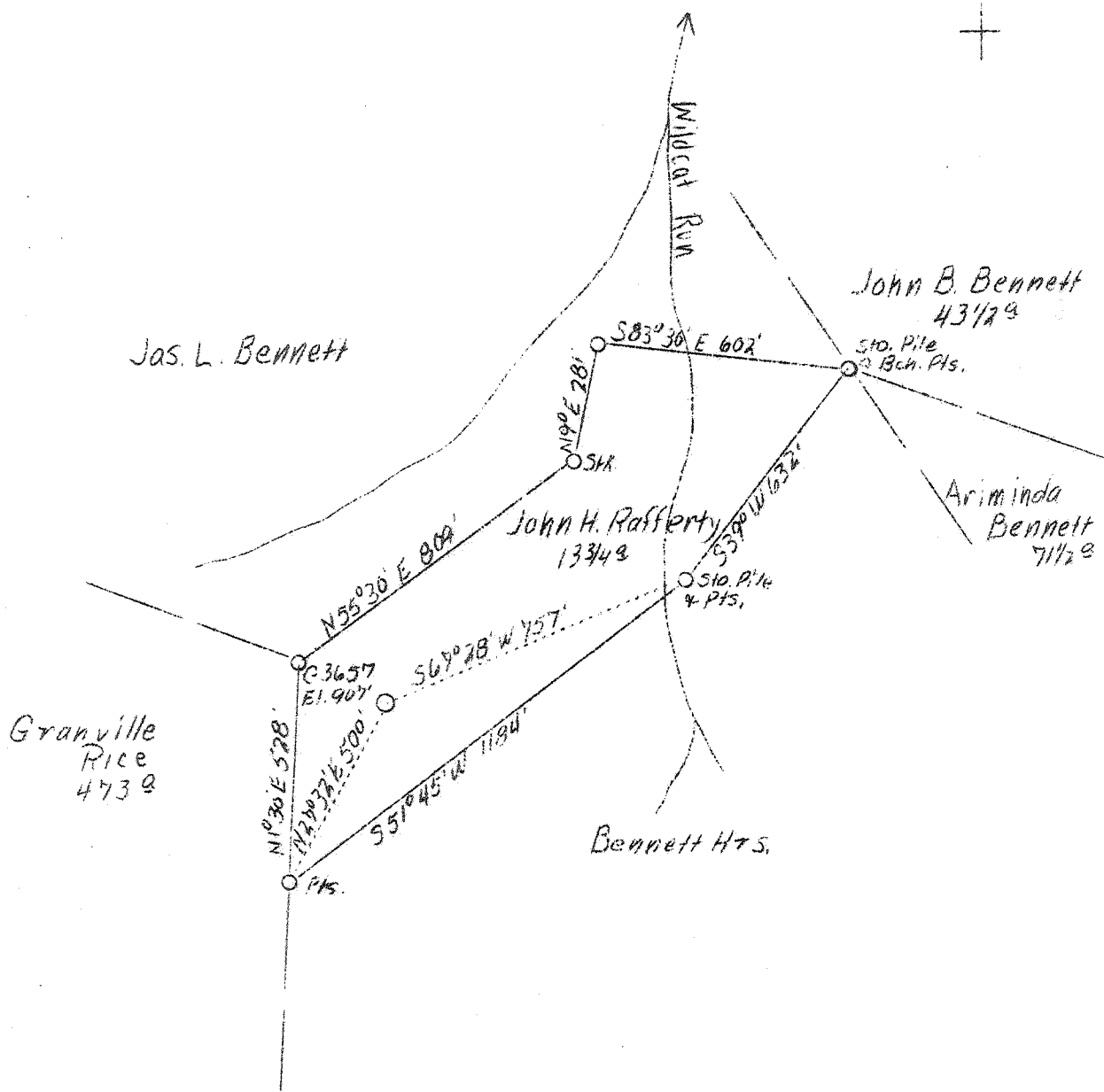


LATITUDE 38° 55'

LONGITUDE 81° 00'



W-1.2  
S-1.5

ABD.

F. B. 668 P. 29436 S38W24 SW96

Company	Hope Const. & Ref. Co.
Address	Clarksburg, W. Va.
Farm	John H. Rafferty
Acres	13-3/4
Lease No.	7876
Well (Farm) No.	One
Serial No.	C-3657
Elevation (SL)	907
Quadrangle	Arnoldsburg <i>EC</i>
County	Calhoun
District	Sherman
Engineer	W. M. Bowers
Eng. Reg. No.	900
Date	Dec. 16, 1938
Scale	1" - 400'

STATE OF WEST VIRGINIA  
 Department of Mines  
 OIL & GAS DIVISION  
 Charleston

WELL LOCATION MAP

File No. Cal-98-A

x Denotes location of well on U. S. Topographic Maps, scale 1 to 62,500, latitude and longitude lines being represented by border lines as shown.

- Denotes one inch spaces on border line of original tracing.

STATE OF WEST VIRGINIA  
DEPARTMENT OF MINES  
OIL AND GAS DIVISION

235

WELL RECORD

Permit No. AP-98-A-

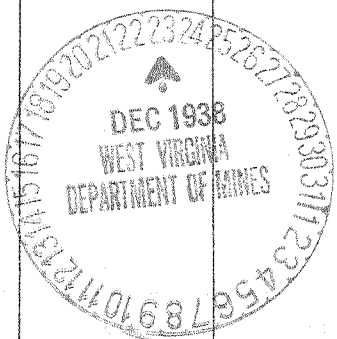
Oil or Gas Well Oil  
(Kind)

Company Hope Construction & Refining Company  
Address Clarksburg, W. Va.  
Farm John H. Rafferty Acres 13 1/2  
Location (waters) Little Kanawha River  
Well No. 3657 Elev. 907  
District Sherman County Calhoun  
The surface of tract is owned in fee by Tunis Roberts  
Address Henrietta, W. Va.  
Mineral rights are owned by \_\_\_\_\_  
Address \_\_\_\_\_  
Drilling commenced 3-25-1919  
Drilling completed 5-6-1919  
Date shot May 1919 Depth of shot In Injun  
Open Flow /10ths Water in \_\_\_\_\_ Inch  
/10ths Merc. in \_\_\_\_\_ Inch  
Volume \_\_\_\_\_ Cu. Ft.  
Rock Pressure \_\_\_\_\_ lbs. \_\_\_\_\_ hrs.  
Oil \_\_\_\_\_ bbls., 1st 24 hrs.  
Fresh water None recorded feet \_\_\_\_\_ feet  
Salt water None recorded feet \_\_\_\_\_ feet

Casing and Tubing	Used in Drilling	Left in Well	Packers
Size			Kind of Packer
16			
13			
10	290	Pulled	Size of
8 1/4	947	Pulled	
6 5/8	1871	1871	Depth set
5 3/16			
3			Perf. top
2	2010	2010	Perf. bottom
Liners Used			Perf. top
			Perf. bottom

CASING CEMENTED \_\_\_\_\_ SIZE \_\_\_\_\_ No. FT. \_\_\_\_\_ Date \_\_\_\_\_  
Not cemented  
COAL WAS ENCOUNTERED AT \_\_\_\_\_ FEET \_\_\_\_\_ INCHES  
\_\_\_\_\_ FEET No coal INCHES \_\_\_\_\_ FEET \_\_\_\_\_ INCHES  
\_\_\_\_\_ FEET \_\_\_\_\_ INCHES \_\_\_\_\_ FEET \_\_\_\_\_ INCHES

Formation	Color	Hard or Soft	Top	Bottom	Oil Gas or Water	Depth Found	Remarks
Sand			15	165			
Little Dunkard Sand			850	860			
Big Dunkard Sand			935	1035			
First Salt Sand			1600	1715			
Maxon Sand			1730	1795	Show Oil	1785	
Little Lime			1810	1835			
Pencil Cave			1835	1870			
Big Lime			1870	1963			
Big Injun Sand			1963	2010	Oil	1994-2010	
Total Depth			2010				



JAN 12 1900

