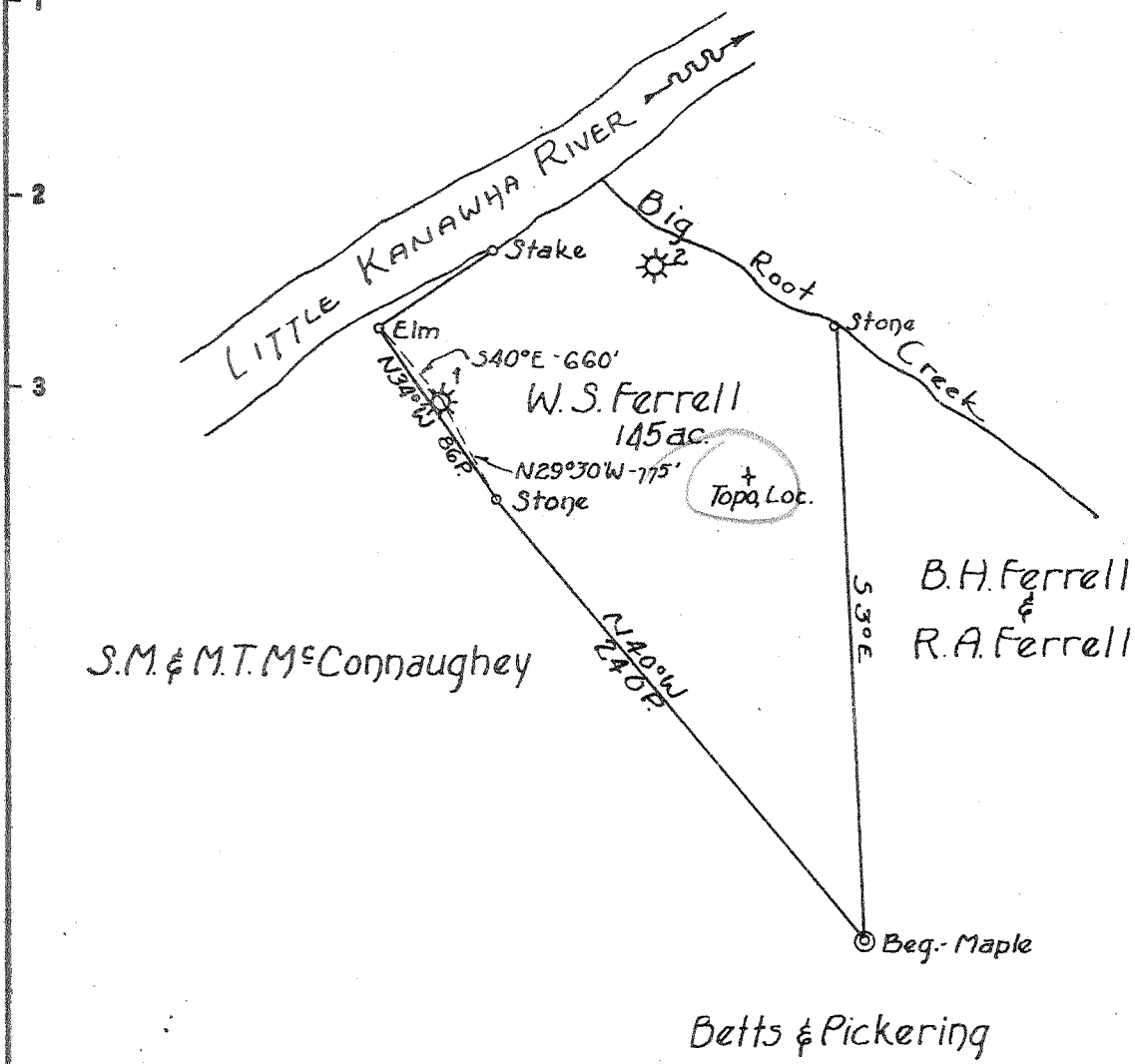


Latitude 39° 00'

Longitude 81° 05'



3655
3.7W

New Location
 Drill Deeper
 Abandonment

Company Godfrey L. Cabot Inc.
 Address 900 Union Bldg. Charleston, W. Va.
 Farm W.S. Ferrell
 Tract _____ Acres 145 Lease No. _____
 Well (Farm) No. 1 Serial No. _____
 Elevation (Spirit Level) 705' (Topo.)
 Quadrangle Arnoldsburg
 County Calhoun District Sheridan
 Engineer Original signed by L. Mc Donald
 Engineer's Registration No. _____
 File No. _____ Drawing No. _____
 Date Feb. 12, 1943 Scale 1"=1320'

STATE OF WEST VIRGINIA
 DEPARTMENT OF MINES
 OIL AND GAS DIVISION
 CHARLESTON

WELL LOCATION MAP
 FILE NO. CAL-168-A

+ Denotes location of well on United States Topographic Maps, scale 1 to 62,500, latitude and longitude lines being represented by border lines as shown.

- Denotes one inch spaces on border line of original tracing.