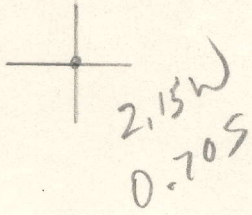


LATITUDE 39°00'00"



LONGITUDE 81°02'30"

7'5 OGIS topo location

7.5' loc \_\_\_\_\_ 15' loc \_\_\_\_\_  
 \_\_\_\_\_ (calc.) \_\_\_\_\_

Company \_\_\_\_\_

Farm \_\_\_\_\_

Quad Grantsville 7 1/2'

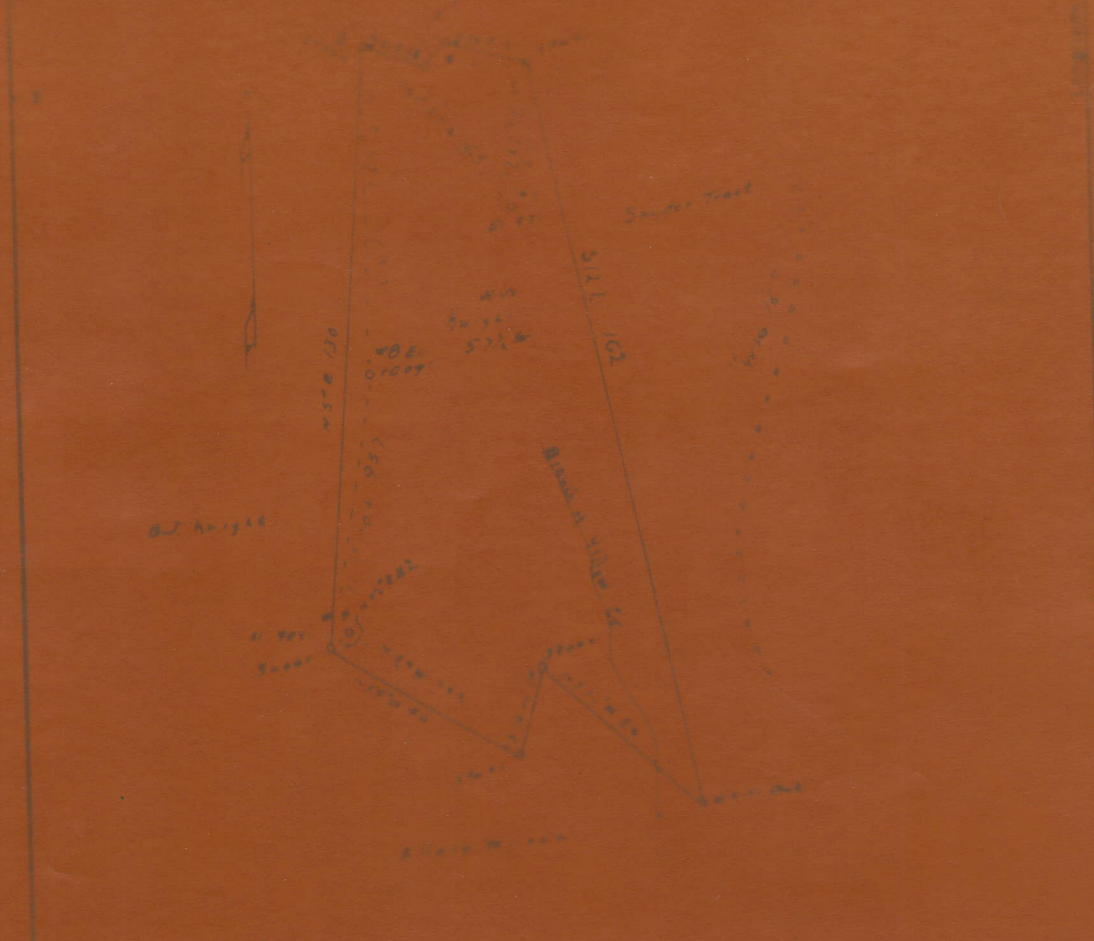
County Calhoun

District Center

WELL LOCATION MAP

File No. 013-225A

9/10/03



Map  
 Date  
 Author

Location  
 Address  
 Name  
 Title

Scale  
 North Arrow  
 Date



STATE OF WEST VIRGINIA  
DEPARTMENT OF MINES  
OIL AND GAS DIVISION

387

AP 205A(2)

WELL RECORD

Permit No. \_\_\_\_\_ Oil or Gas Well oil  
(KIND)

Company Bowser Gas & Oil Co.  
Address Union Trust Bldg. Parkersburg, W. Va.  
Farm W.V. Knight Acres 57 1/2  
Location (waters) Branch of Yellow Creek  
Well No. eight (8) Elev. 1009  
District Center County Calhoun  
The surface of tract is owned in fee by W.V. Knight  
Big Springs, W. Va. Address  
Mineral rights are owned by same  
Address

Casing and Tubing	Used in Drilling	Left in Well	Packers
Size			
16			Kind of Packer
13	17'	0	
10			Size of
8 1/4	1035	0	
6 5/8	1926	1926	Depth set
5 3/16			
3			Perf. top
2			Perf. bottom
Liners Used			Perf. top
			Perf. bottom

Drilling commenced 1905  
Drilling completed 1905  
Date Shot ? From \_\_\_\_\_ To \_\_\_\_\_  
With \_\_\_\_\_  
Open Flow ? /10ths Water in \_\_\_\_\_ Inch  
/10ths Merc. in \_\_\_\_\_ Inch  
Volume \_\_\_\_\_ Cu. Ft.  
Rock Pressure \_\_\_\_\_ lbs. \_\_\_\_\_ hrs.  
Oil \_\_\_\_\_ bbls., 1st 24 hrs.  
Fresh water \_\_\_\_\_ feet \_\_\_\_\_ feet  
Salt water \_\_\_\_\_ feet \_\_\_\_\_ feet

CASING CEMENTED \_\_\_\_\_ SIZE \_\_\_\_\_ No. Ft. \_\_\_\_\_ Date \_\_\_\_\_  
COAL WAS ENCOUNTERED AT none FEET \_\_\_\_\_ INCHES  
\_\_\_\_\_ FEET \_\_\_\_\_ INCHES FEET \_\_\_\_\_ INCHES  
\_\_\_\_\_ FEET \_\_\_\_\_ INCHES FEET \_\_\_\_\_ INCHES

Formation	Color	Hard or Soft	Top	Bottom	Oil, Gas or Water	Depth Found	Remarks
Second salt			1700		gas and water		
Maxon sand			1790	1820	little gas	20'	
Berea sand			2379	2411	oil	2395 to 2404	
Total depth			2411				

Handwritten red scribble

