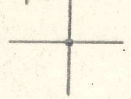


LATITUDE 38° 40'



1.33 W

0.42 S

150° 18' LONGITUDE

7'5 OGIS topo location

7.5' loc _____

15' loc _____
(calc.) _____

Company _____

Farm _____

Quad Otter (C)

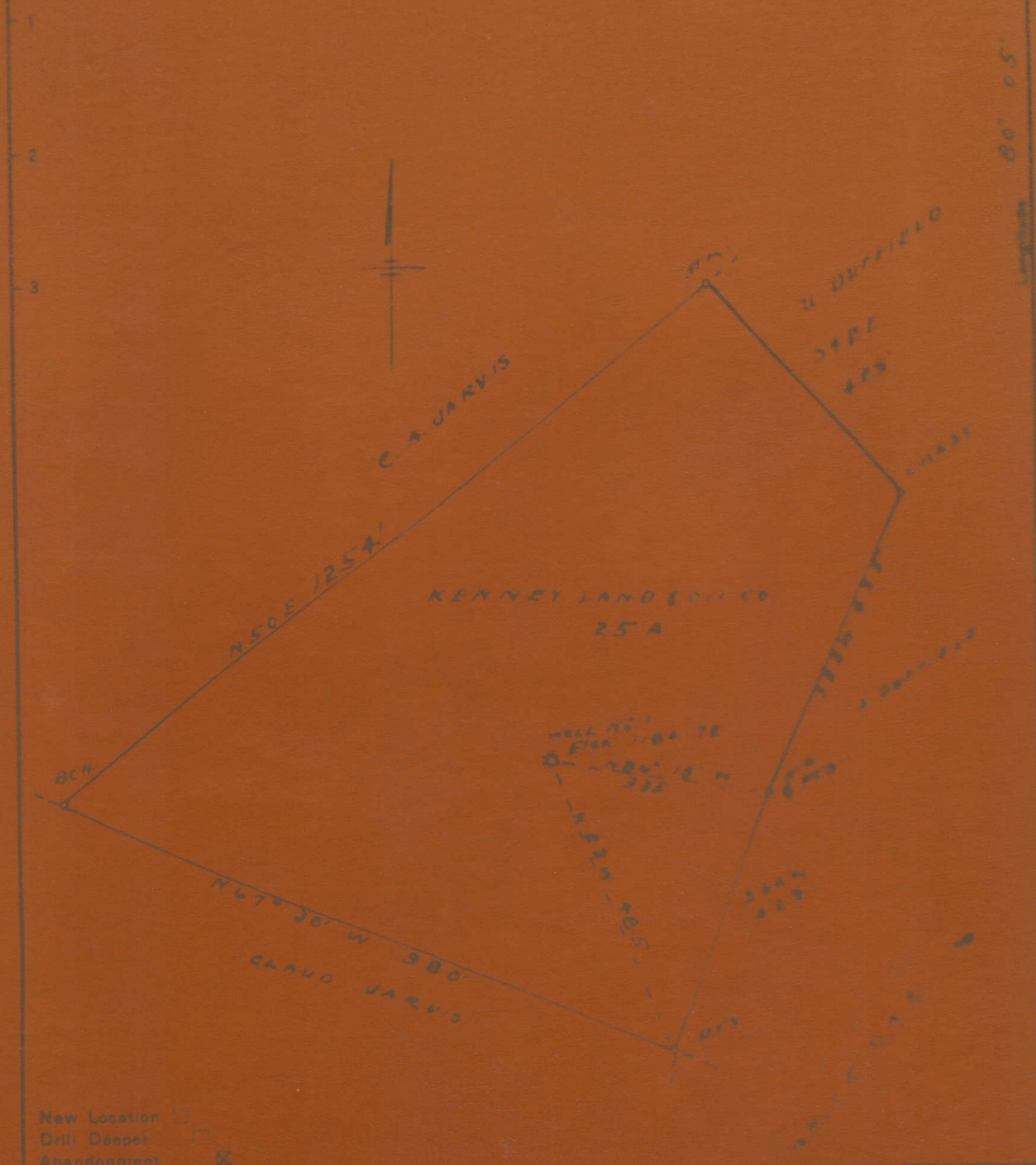
County Calhoun

District Washington

WELL LOCATION MAP

File No. 013-294A

Latitude 38 40



New Location

Drill Deeper

Abandonment

Company H. R. ADAMS ET AL

Address SPENCER, W. VA

Farm KENNEY LAND OIL CO

STATE OF WEST VIRGINIA
DEPARTMENT OF MINES
OIL AND GAS DIVISION
CHARLESTON

JARVIS, C. A., NO. 1.

Cal-294-A.

By H. R. Adams et al.

Washington Dist.

NO PLAT

micro? Cannot read
NO LOCATION

~~nr~~
~~38° 40'~~
38° 40'
80° 05'
plato micro