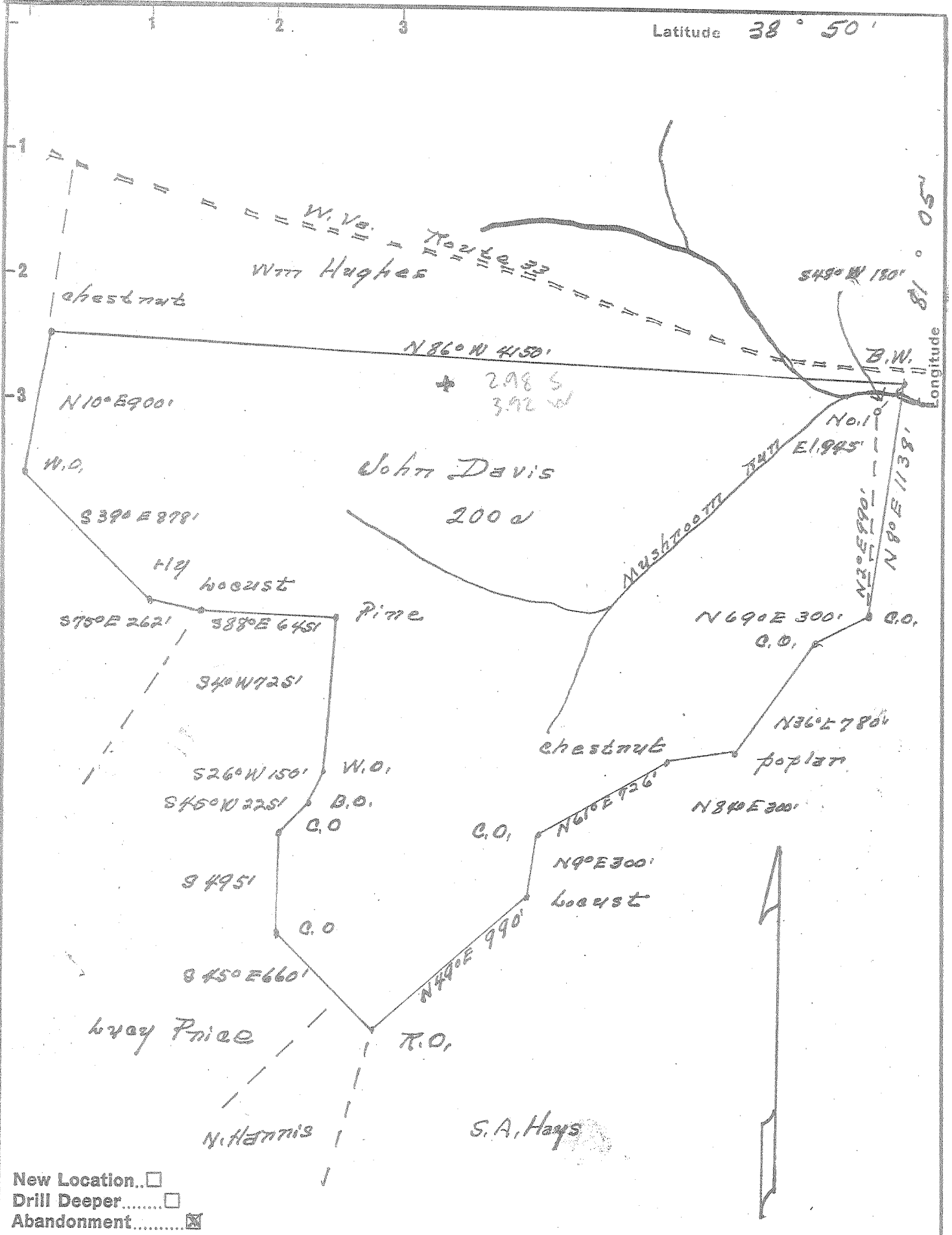


Latitude 38° 50'



New Location...   
 Drill Deeper.....   
 Abandonment.....

Company P. P. Gunn  
 Address Grantsville, W. Va.  
 Farm John Davis  
 Tract \_\_\_\_\_ Acres 200 Lease No. \_\_\_\_\_  
 Well (Farm) No. 1 Serial No. \_\_\_\_\_  
 Elevation (Spirit Level) 945'  
 Quadrangle Arnoldsburg  
 County Calhoun District see  
 surveyed by Holly Nesten  
 Engineer Donald W. Morris  
 Engineer's Registration No. 1653  
 File No. \_\_\_\_\_ Drawing No. \_\_\_\_\_  
 Date 3/27/56 Scale 1" = 600'

STATE OF WEST VIRGINIA  
 DEPARTMENT OF MINES  
 OIL AND GAS DIVISION  
 CHARLESTON

**WELL LOCATION MAP**  
 FILE NO. CAL-334-A

+ Denotes location of well on United States Topographic Maps, scale 1 to 62,500, latitude and longitude lines being represented by border lines as shown.

- Denotes one inch spaces on border line of original tracing.