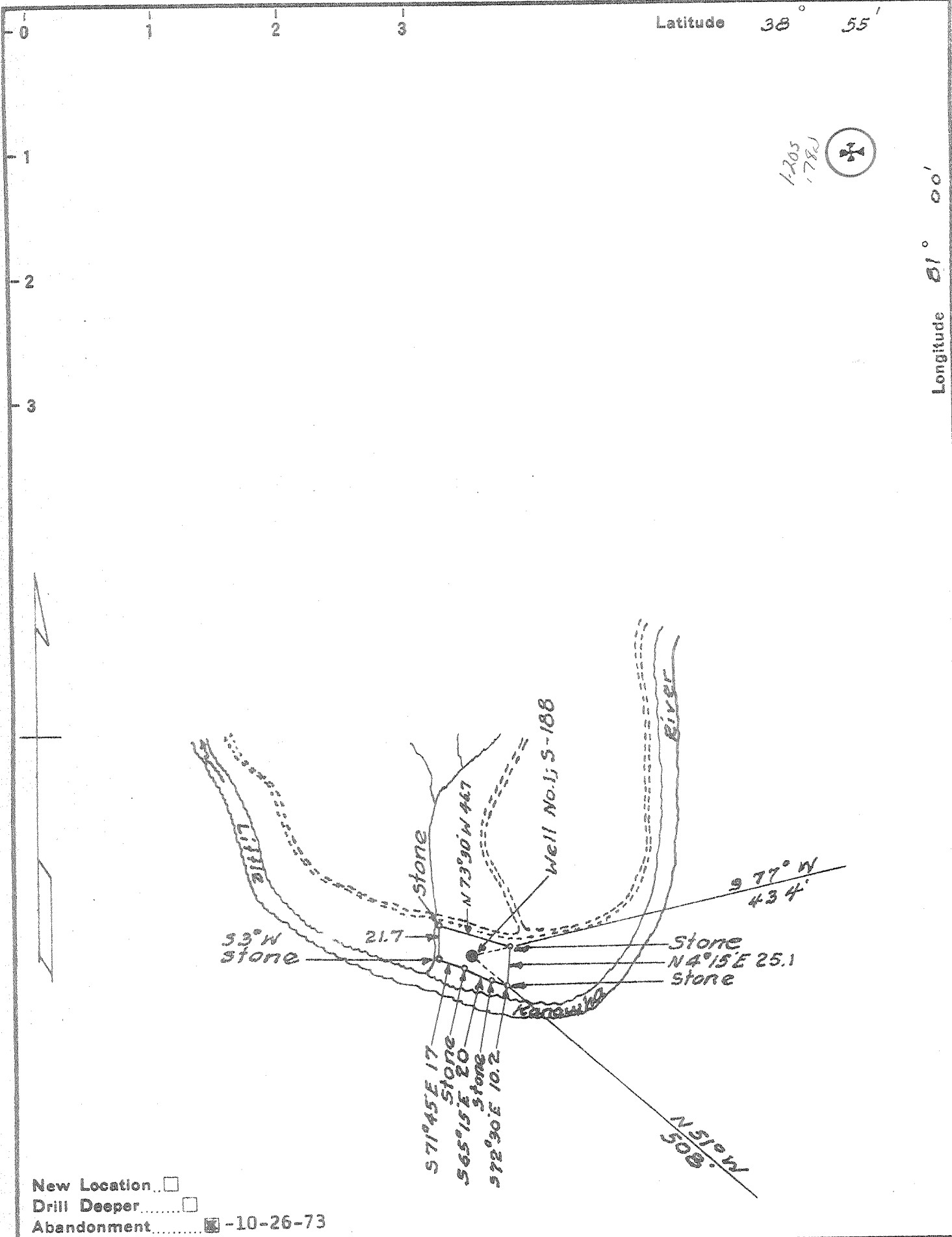


1205
1782



New Location
 Drill Deeper
 Abandonment -10-26-73

Calhoun County Board of Education
 Company ~~Calhoun County Board of Education~~
 P.O. Box 215, Grantsville, W.Va. 26147
 Address ~~500 Market St. Charleston, W.Va.~~
 Farm Mary E. Bennett Hrs.
 Tract One Acres 6.15 Lease No. 1-154
 Well (Farm) No. 1 Serial No. 188
 Elevation (Spirit Level) 712
 Quadrangle Arnoldsburg EC
 County Calhoun District Sherman
 Engineer Logan McDonald
 Engineer's Registration No. 610
 File No. _____ Drawing No. _____
 Date 4-9-45 Scale 1" = 1320'

STATE OF WEST VIRGINIA
 DEPARTMENT OF MINES
 OIL AND GAS DIVISION
 CHARLESTON

WELL LOCATION MAP
 FILE NO. CAL-407-A

+ Denotes location of well on United States Topographic Maps, scale 1 to 62,500, latitude and longitude lines being represented by border lines as shown.

- Denotes one inch spaces on border line of original tracing. 47 013