

WW-7
8-30-06



West Virginia Department of Environmental Protection
Office of Oil and Gas
WELL LOCATION FORM: GPS

API: 47-015-0326 P WELL NO.: Shaver 7940

FARM NAME: Shaver

RESPONSIBLE PARTY NAME: Range Resources-Pine Mountain, Inc.

COUNTY: Clay DISTRICT: Buffalo

QUADRANGLE: Strange Creek 7.5'

SURFACE OWNER: Norlena Sue Metheny et. al.

ROYALTY OWNER: Range Resources-Pine Mountain, Inc.

UTM GPS NORTHING: 4,263,132

UTM GPS EASTING: 502,728 GPS ELEVATION: 335 m (1098 ft)

The Responsible Party named above has chosen to submit GPS coordinates in lieu of preparing a new well location plat for a plugging permit or assigned API number on the above well. The Office of Oil and Gas will not accept GPS coordinates that do not meet the following requirements:

- Datum: NAD 1983, Zone: 17 North, Coordinate Units: meters, Altitude: height above mean sea level (MSL) – meters.
- Accuracy to Datum – 3.05 meters
- Data Collection Method:
Survey grade GPS : Post Processed Differential
Real-Time Differential
Mapping Grade GPS : Post Processed Differential
Real-Time Differential
- Letter size copy of the topography map showing the well location.

RECEIVED
Office of Oil & Gas

NOV 14 2011

WV Department of
Environmental Protection

I the undersigned, hereby certify this data is correct to the best of my knowledge and belief and shows all the information required by law and the regulations issued and prescribed by the Office of Oil and Gas.

Ben R. Saylor
Signature

P.S. 2092
Title

8-16-2011
Date

Topo Quad: Strange Creek 7.5'

Scale: 1" = 2000'

County: Clay

Date: Aug. 16, 2011

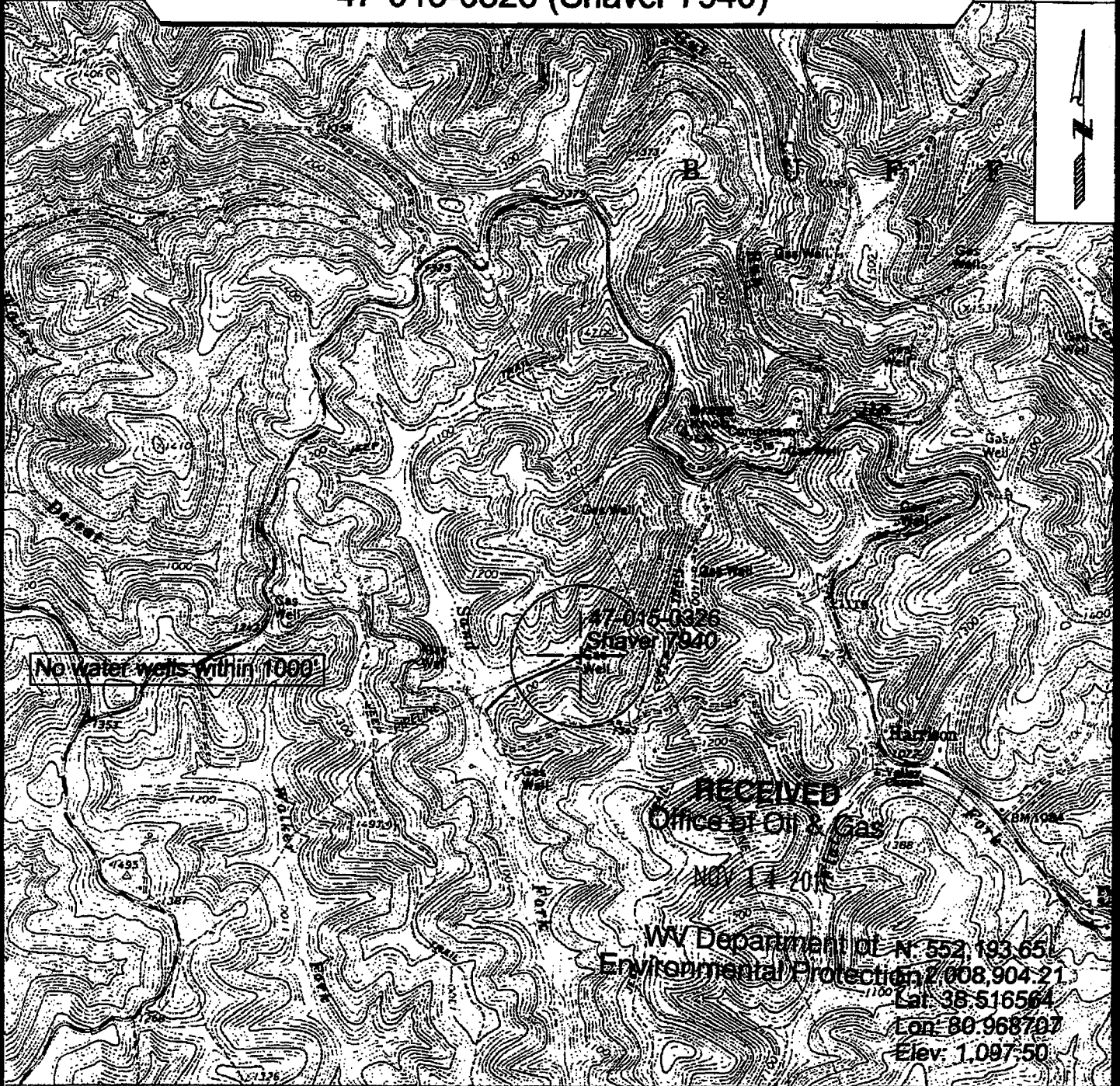
District: Buffalo

Project No: 137-04-B-11

Water

47-015-0326 (Shaver 7940)

Topo



SURVEYING AND MAPPING SERVICES PERFORMED BY:

ALLEGHENY SURVEYS, INC.

1-800-482-8606
P.O. BOX 438
BIRCH RIVER, WV 25610
PH: (304) 649-8606
FAX: (304) 649-8608

PREPARED FOR:

Range Resources-Pine Mountain, Inc.

P.O. Box 2136
Abingdon, VA 24212