



15-01198P  
RECEIVED  
Office of Oil & Gas  
APR 02 2012

West Virginia Department of Environmental Protection  
Office of Oil and Gas

Department of Environmental Protection

WELL LOCATION FORM: GPS

API: 47-15-1798 WELL NO.: 1795

FARM NAME: J. B. Casto

RESPONSIBLE PARTY NAME: Triad Hunter

COUNTY: Clay DISTRICT: Henry

QUADRANGLE: Newton

SURFACE OWNER: Ronald Staccher

ROYALTY OWNER: \_\_\_\_\_

UTM GPS NORTHING: ~~4391787~~ 4266052.5

UTM GPS EASTING: ~~477344~~ 48683.7 GPS ELEVATION: 979

The Responsible Party named above has chosen to submit GPS coordinates in lieu of preparing a new well location plat for a plugging permit or assigned API number on the above well. The Office of Oil and Gas will not accept GPS coordinates that do not meet the following requirements:

1. Datum: NAD 1983, Zone: 17 North, Coordinate Units: meters, Altitude: height above mean sea level (MSL) - meters.
2. Accuracy to Datum - 3.05 meters
3. Data Collection Method:

Survey grade GPS \_\_\_\_\_ Post Processed Differential \_\_\_\_\_  
Real-Time Differential \_\_\_\_\_

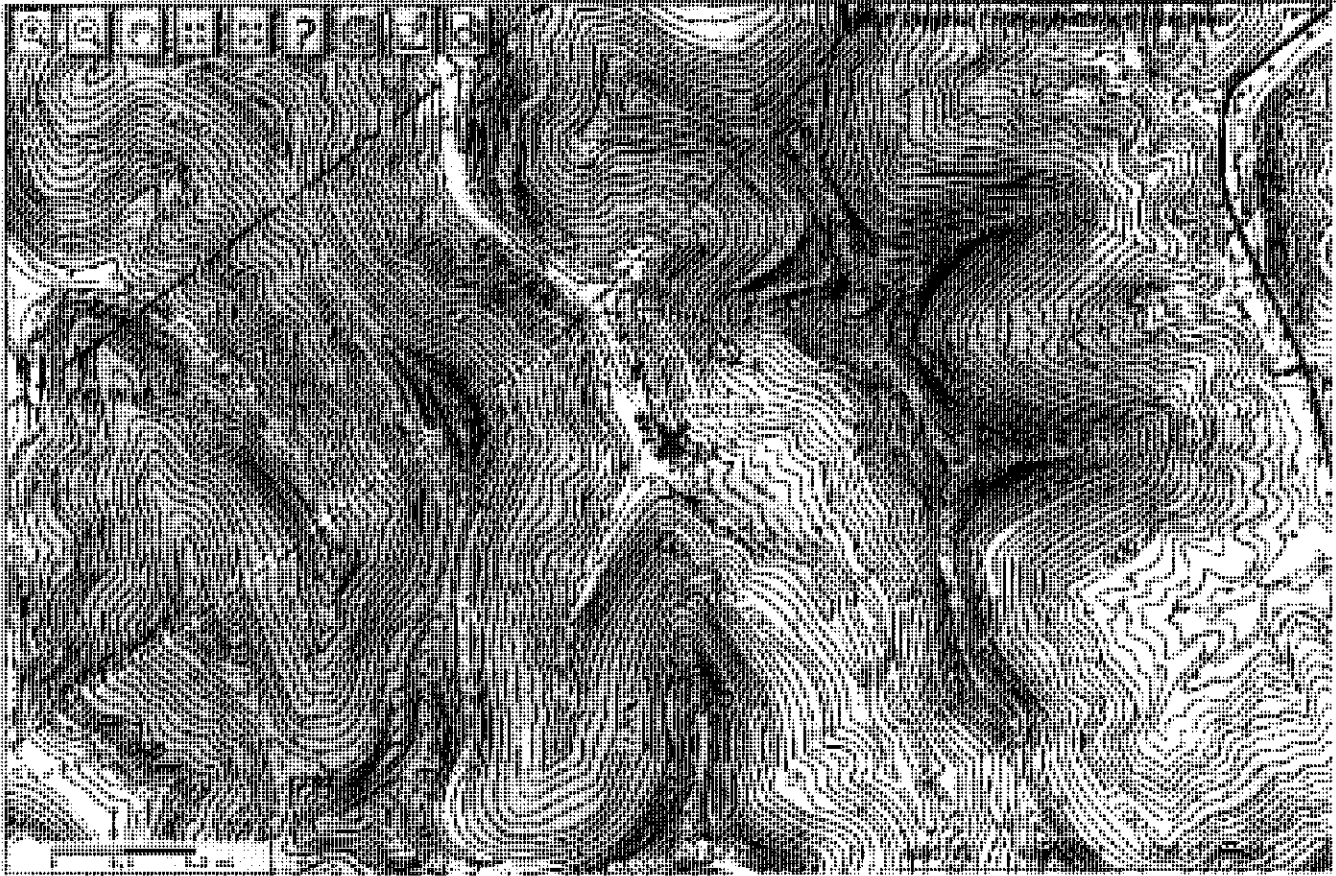
Mapping Grade GPS \_\_\_\_\_ Post Processed Differential \_\_\_\_\_  
Real-Time Differential \_\_\_\_\_

4. Letter size copy of the topography map showing the well location.  
I the undersigned, hereby certify this data is correct to the best of my knowledge and belief and shows all the information required by law and the regulations issued and prescribed by the Office of Oil and Gas.

Steve Blankenship Pres 2/5/12  
Signature Title Date

RECEIVED  
Office of Oil & Gas  
MAR 20 2012  
WV Department of Environmental Protection

15-01899-P



map layers overview map locate query results help about

on query

layer

legend

- County Boundaries
- 2007 Aerial Photography
- USGS Topographic Map
- hillshade
- FEMA Q3 Floodplain
- Mining Permit Boundaries

- county
- 190 Year
- 500 Year
- Not Started
- Inactive
- Active
- Reclamation
- Released
- Revoked

<http://gis.dep.wv.gov/imap/imap.php?x=486883.7&y=4266052.5&datum=NAD83&ex=15...> 4/27/2012