

WW-7  
8-30-06



West Virginia Department of Environmental Protection  
Office of Oil and Gas  
**WELL LOCATION FORM: GPS**

API: 47-15-1415 WELL NO.: 1  
 FARM NAME: Brown McCorkle  
 RESPONSIBLE PARTY NAME: Steve Rubin  
 COUNTY: Clay DISTRICT: Henry  
 QUADRANGLE: Ivydale  
 SURFACE OWNER: Lowell Rogers  
 ROYALTY OWNER: Blue Creek Gas  
 UTM GPS NORTHING: ~~17564900~~ 65 E  
 UTM GPS EASTING: 4265503 <sup>N</sup> <sub>N</sub> GPS ELEVATION: 1305

The Responsible Party named above has chosen to submit GPS coordinates in lieu of preparing a new well location plat for a plugging permit or assigned API number on the above well. The Office of Oil and Gas will not accept GPS coordinates that do not meet the following requirements:

1. Datum: NAD 1983, Zone: 17 North, Coordinate Units: meters, Altitude: height above mean sea level (MSL) – meters.
2. Accuracy to Datum – 3.05 meters
3. Data Collection Method:

Survey grade GPS \_\_\_\_\_: Post Processed Differential \_\_\_\_\_

Real-Time Differential \_\_\_\_\_

Mapping Grade GPS \_\_\_\_\_: Post Processed Differential \_\_\_\_\_

Real-Time Differential \_\_\_\_\_

4. Letter size copy of the topography map showing the well location.

I the undersigned, hereby certify this data is correct to the best of my knowledge and belief and shows all the information required by law and the regulations issued and prescribed by the Office of Oil and Gas.

Steve Duckworth contractor  
Signature Title

3-10-14  
Date

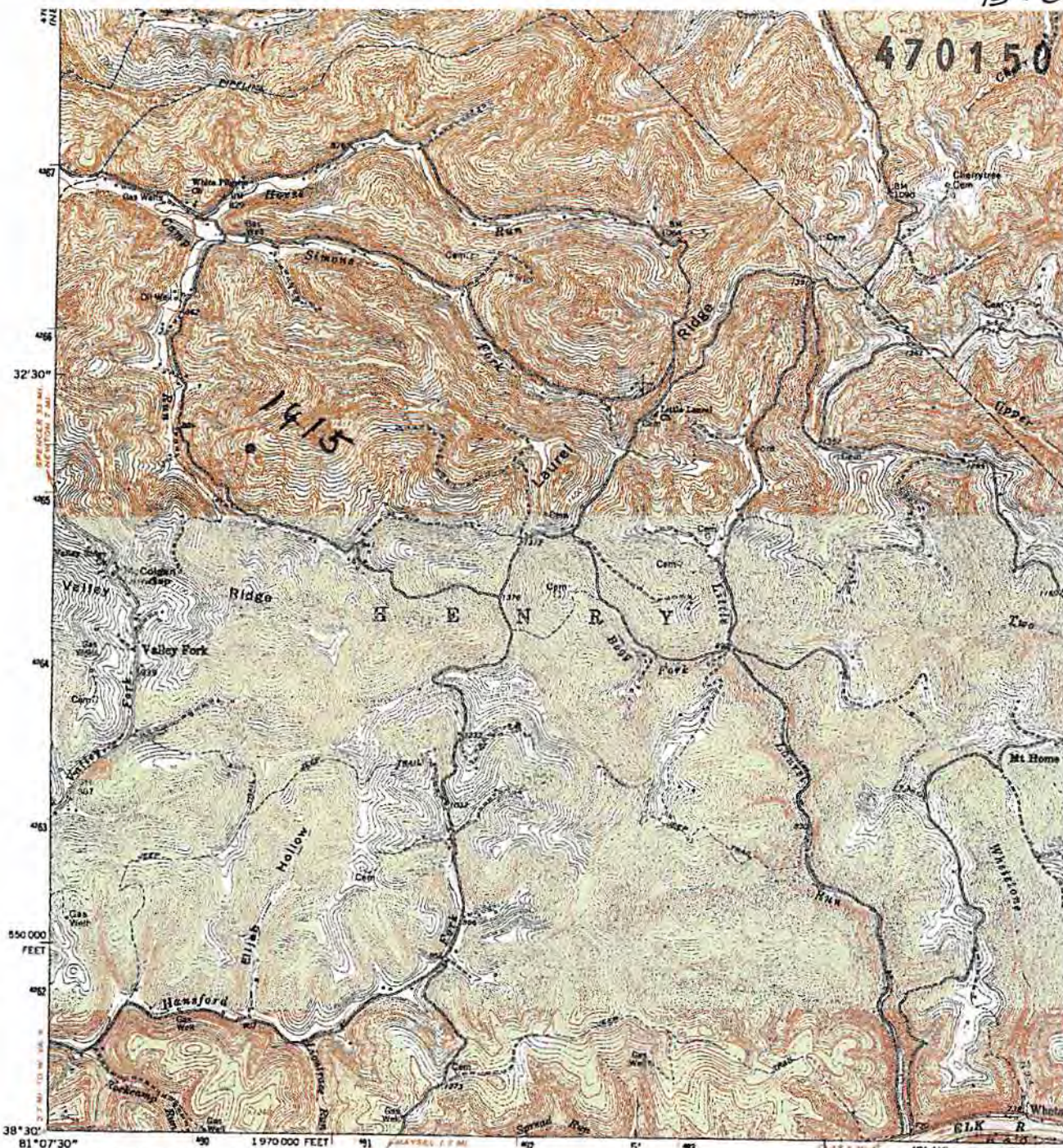
Received

MAR 13 2014

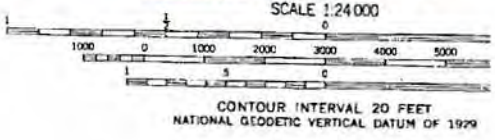
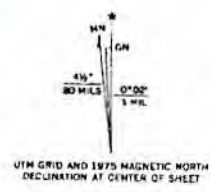
Office of Oil and Gas  
Dept. of Environmental Protection

15-01415

4701501415



Mapped, edited, and published by the Geological Survey  
 Control by USGS and USC&GS  
 Topography by photogrammetric methods from aerial photographs taken 1962. Field checked 1965  
 Polyconic projection. 1927 North American datum  
 10,000-foot grid based on West Virginia coordinate system, south zone  
 1000-meter Universal Transverse Mercator grid ticks, zone 17, shown in blue  
 Fine red dashed lines indicate selected fence and field lines where generally visible on aerial photographs. This information is unchecked  
 Revisions shown in purple compiled in cooperation with State of West Virginia agencies from aerial photography taken 1975. This information not field checked



THIS MAP COMPLIES WITH NATIONAL MAP ACCURACY STANDARDS FOR SALE BY U. S. GEOLOGICAL SURVEY, RESTON, VIRGINIA  
 A FOLDER DESCRIBING TOPOGRAPHIC MAPS AND SYMBOLS IS AVAILABLE