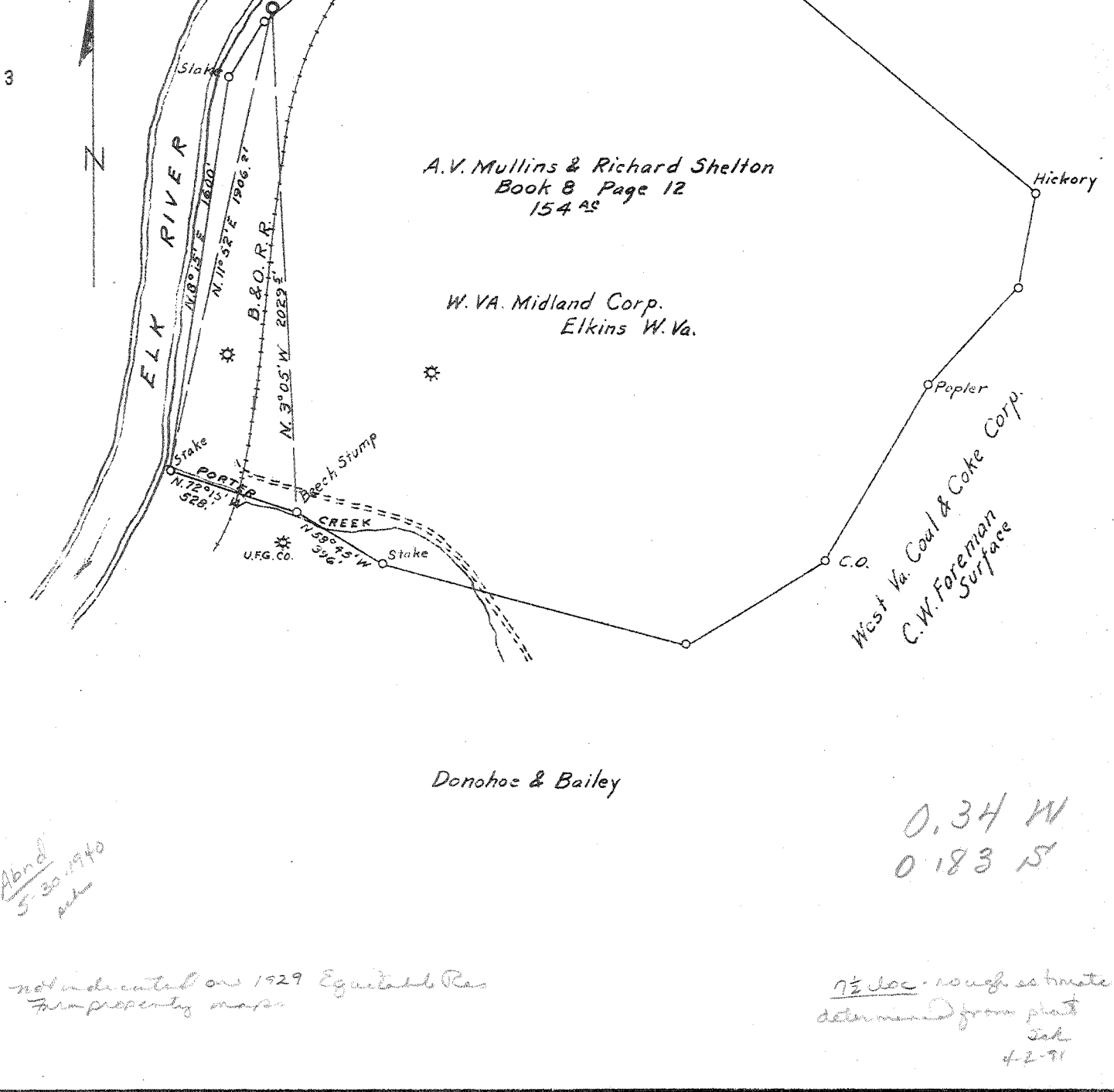


Latitude 38 30 (92:15)

Longitude 81 15 (96:15)



Company HAMILTON GAS CORPORATION
 Address CHARLESTON, WEST VA.
 Farm A.V. Mullins & Richard Shelton
 Tract ONE Acres 154 Lease No. _____
 Well (Farm) No. 2 Serial No. A-19
 Elevation (Spirit Level) 645.1
 Quadrangle CLENDENIN N.E. / Clendenin 7E
 County CLAY District UNION
 Engineer Gas S. Chase
 Engineer's Registration No. 425
 File No. _____ Drawing No. _____
 Date April 15, 1940 Scale 1" = 600'

STATE OF WEST VIRGINIA
 DEPARTMENT OF MINES
 OIL AND GAS DIVISION
 CHARLESTON

WELL LOCATION MAP
 FILE NO. CLA-8A

+ Denotes location of well on United States Topographic Maps, scale 1 to 62,500, latitude and longitude lines being represented by border lines as shown.

- Denotes one inch spaces on border line of original tracing.