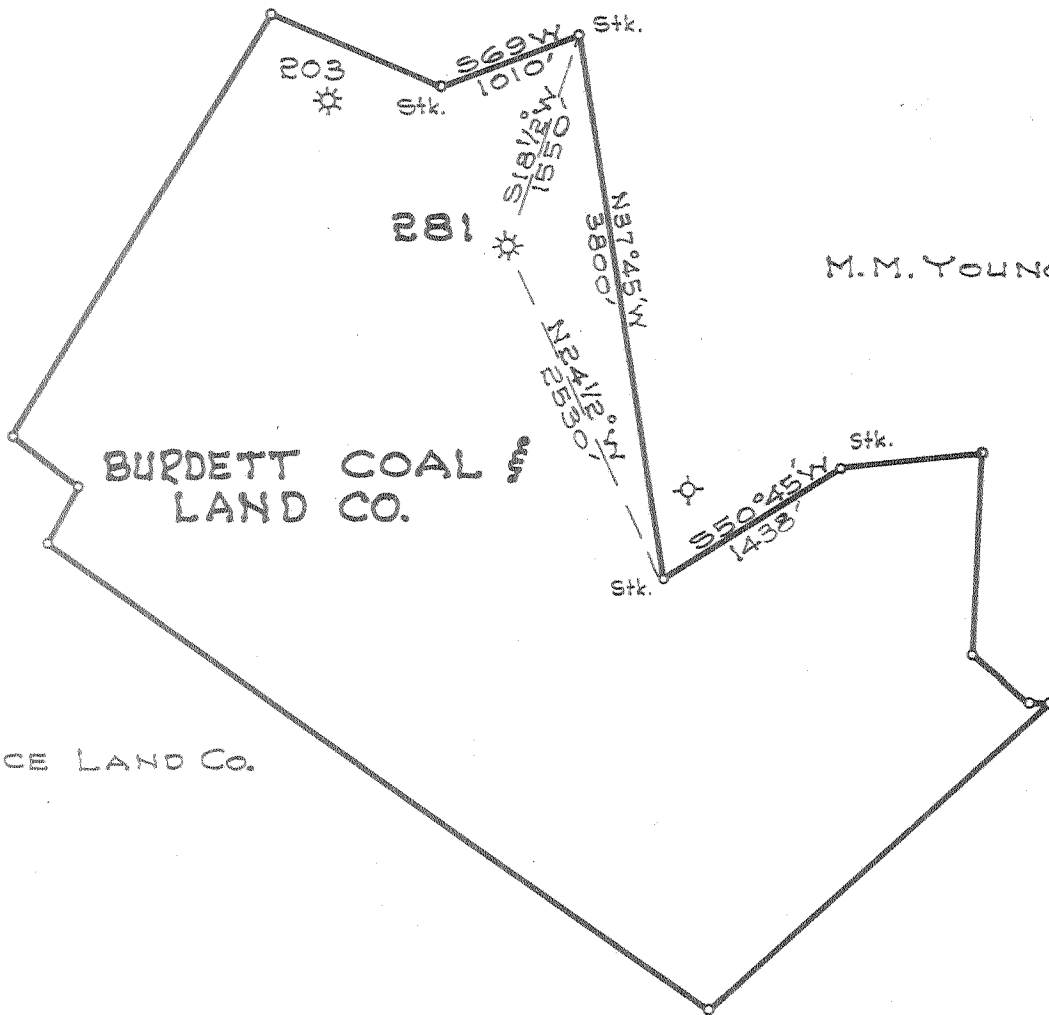


Latitude 38° 30'

Longitude 81° 15'

HELEN DAVIS



PRINCE LAND CO.

M.M. YOUNG

BURDETT COAL LAND CO.

Actual
4-19-51
ack

FEB 11 1952

0.4 W
2198

New Location...
Drill Deeper...
Abandonment...

Company UNITED FUEL GAS CO.
 Address CHARLESTON, W.VA.
 Farm BURDETT COAL LAND CO.
 Tract Acres 1057 Deed Lease No. P417675
 Well (Farm) No. 3 Serial No. 281
 Elevation (Spirit Level) 1053.
 Quadrangle CLENDENIN
 County CLAY District UNION
 Engineer *H. M. Moore*
 Engineer's Registration No. 662
 File No. 82-65 Drawing No.
 Date 8-1-51 Scale 1"=1320'

STATE OF WEST VIRGINIA
DEPARTMENT OF MINES
OIL AND GAS DIVISION
CHARLESTON

WELL LOCATION MAP
FILE NO. CLAY-65-A

+ Denotes location of well on United States Topographic Maps, scale 1 to 62,500, latitude and longitude lines being represented by border lines as shown.

- Denotes one inch spaces on border line of original tracing.

6-6 (220)

BURDETT COAL & LAND CO. NO. 3 (281) WELL.

#205 - Map 1917
County Rep.

Union District, Clay County, W. Va.

By United Fuel Gas Co., Box 1273, Charleston, 25, W. Va.

Abandoned under permit Clay-65-A; Clendenin Quadrangle.

On 1057 acres, on Left Fork of Queen Shoals Creek.

Elevation, 1053' L.

Minerals owned by United Fuel Gas Co., Box 1273, Charleston, 25, W. Va.

Drilling commenced Dec. 10, 1910; completed Feb. 19, 1911.

Well was not shot.

Open flow, 25/10ths W. in 6 $\frac{5}{8}$ ".

Volume, 2,514,000 cu. ft., Big Injun Sand.

Rock pressure, not given.

Fresh water, 100'.

10" casing, 48' (pulled); 8 $\frac{1}{4}$ " , 660' (pulled); 6 $\frac{5}{8}$ " , 1617'; 3" tubing, 1734'.

Anchor packer, 3 x 6 $\frac{5}{8}$, set at 1649'.

Coal was encountered at 350-360'.

Gas well. Record to Dept. of Mines dated March 9, 1951.

Record to RCT from Lineberg Feb. 11, 1952. Old File No. 327.

	Top.	Bottom.
Soil	0	7
Sand (water)	7	100
White slate	100	130
Sand	130	150
White lime	150	160
Black slate	160	161
Sand	161	200
Black slate	200	210
Sand	210	300
Black slate	300	330
Black lime	330	340
Black slate	340	350
Coal	350	360
Black slate	360	420
White lime	420	440
White slate	440	550
Sand	550	660
White and black slate	660	820
Big Dunkard Sand	820	940
Salt Sand	940	1300
Slate	1300	1305
Lime	1305	1350
Sand	1350	1500
Maxton Sand	1500	1575
Little Lime	1575	1597
Big Lime	1597	1700
Big Injun Sand (gas, 1713')	1700	1734
Total depth		1734