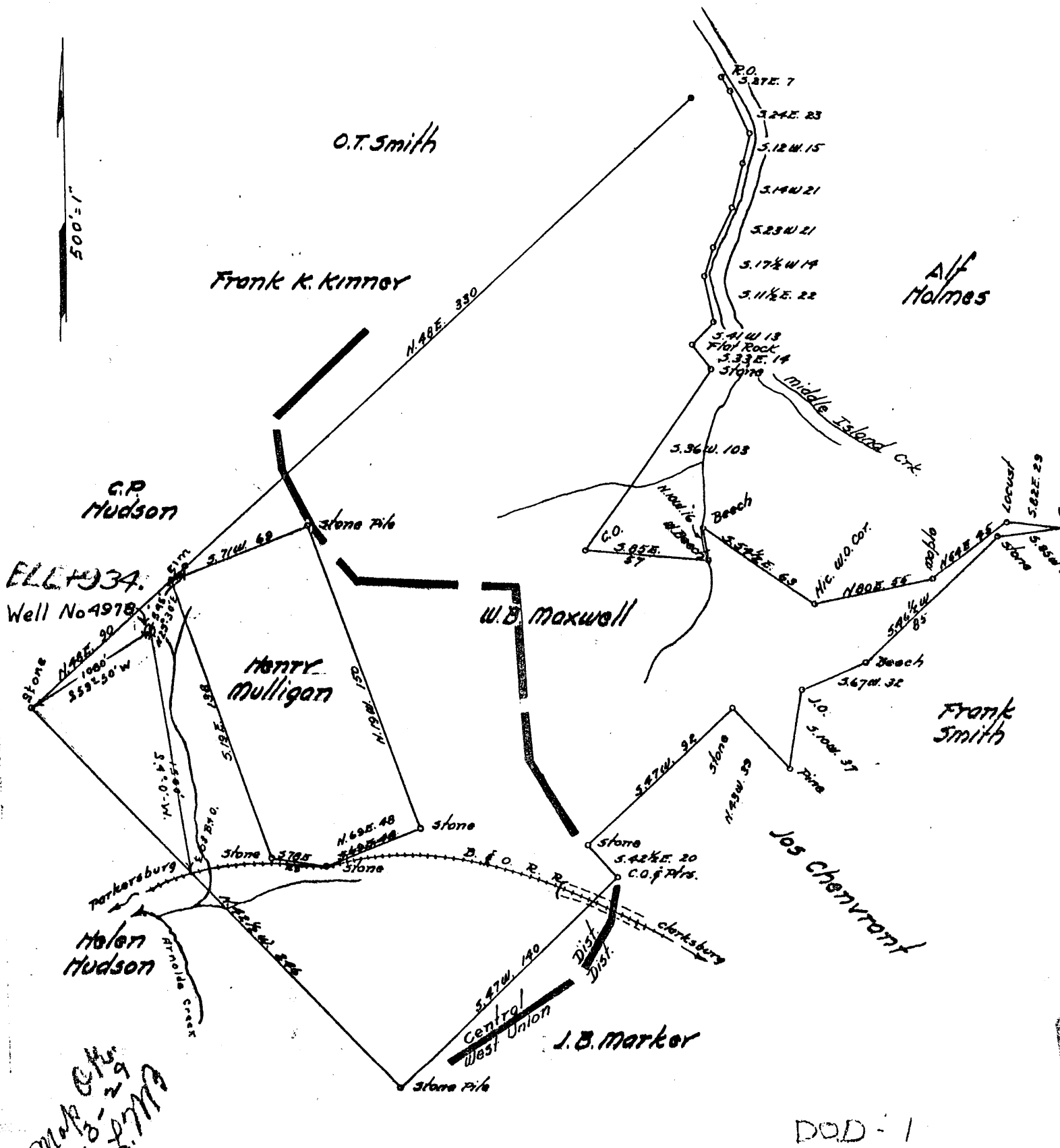


PLAN OF THE PROPOSED LOCATION OF WELL NO. 4978 OF THE Philadelphia

Oil Company OF Pittsburg, Penna ON THE

U.B. Maxwell FARM, CONSISTING OF 420 ACRES

LOCATED IN West Union DISTRICT Doddridge COUNTY



9/11/34  
7-3-29  
2:27 PM

DOD - 1

ENGINEER'S CERTIFICATE

I, the undersigned, hereby certify that this Map is correct and shows all the information to the best of my knowledge and belief, required by the oil and gas section of the Mining Laws of West Virginia.

W. C. McMasters, Notary Public  
My Commission Expires  
March 23, 1933

J. E. Bigdan  
(Engineer)

Acknowledged before me a Notary Public, this 10th

day of July 19 29.

W. C. McMasters

LATITUDE 39° 20'

LONGITUDE 90° 47' 30"



7'5 OGIS topo location

7.5' loc	<u>2.21 S</u>	15' loc	<u>2.21 S</u>
	<u>0.95 W</u>	(calc.)	<u>3.19 W</u>

Company PHILADELPHIA OIL CO.

Farm LEWIS MAXWELL 1 (4978)

Quad WEST UNION + 15' SE

County DUND

District WEST UNION

WELL LOCATION MAP

File No. 017-1

WEST VIRGINIA DEPARTMENT OF MINES

OIL & GAS SECTION

PRELIMINARY DATA SHEET NO. 1

File No. Ded 1

Well No. 4978

PHILADELPHIA OIL Company, of #435 Sixth Avenue,  
Pittsburgh, Penna. on the Lewis Maxwell Farm  
containing 420 acres. Location \_\_\_\_\_  
West Union District, in Doddridge County, W. Va.

The surface of the above tract is owned in fee by \_\_\_\_\_  
Edwin L. Maxwell of West Union,  
Doddridge County, W. Va. address, and the  
mineral rights are owned by Lewis Maxwell et al., West Union, Doddridge  
County, W. Va.

The oil and gas privileges are held under lease by the  
above named company, and this well is drilled under permit No. \_\_\_\_\_  
issued by the West Virginia Department of Mines, Oil and Gas Section,  
July 9th, 1929.

Elevation of surface at top of well, \_\_\_\_\_ Spirit  
Barometric.

The number of feet of the different sized casings used in the well.  
\_\_\_\_\_ feet \_\_\_\_\_ size. Wood conductor.  
525 feet 10 size, csg. 1037 feet 8 1/2 sized csg.  
1898 feet 6-5/8 size, csg. \_\_\_\_\_ feet \_\_\_\_\_ sized csg.  
\_\_\_\_\_ feet \_\_\_\_\_ size, csg. \_\_\_\_\_ feet \_\_\_\_\_ sized csg.

\_\_\_\_\_ packer of \_\_\_\_\_ size, set at \_\_\_\_\_

\_\_\_\_\_ packer of \_\_\_\_\_ size, set at \_\_\_\_\_

\_\_\_\_\_ in. casing perforated at \_\_\_\_\_ feet to \_\_\_\_\_ feet.

\_\_\_\_\_ in. casing perforated at \_\_\_\_\_ feet to \_\_\_\_\_ feet.

Coal was encountered at 350 feet; thickness 72 inches, and at  
598 feet; thickness 60 inches; and at \_\_\_\_\_ feet;  
thickness \_\_\_\_\_ inches.

Liners were used as follows: (Give details) \_\_\_\_\_

October 8th, 1929.

PHILADELPHIA OIL COMPANY

Date.

Approved \_\_\_\_\_

Owner.

OC 11 1929

By \_\_\_\_\_

OPERATING MANAGER.

(Title)

Drilling Commenced - August 3, 1929.  
Drilling Completed - September 19, 1929.  
DRY HOLE through Gordon Sand.

*O.K. File  
8.27.29*

COMPLETION DATA SHEET NO. 2

FORMATION RECORD

DOD-1

NAME	COLOR	CHARACTER	OIL, GAS OR WATER	TOP	BOTTOM	THICKNESS	TOTAL DEPTH	REMARKS
Red Rock	Red			0'	10'	10'	10'	
Sand				10	20	10	20	
Slate				20	40	20	40	
Red Rock	Red			40	60	20	60	
Lime				60	80	20	80	
Red Rock	Red			80	120	40	120	
Lime		( 120' to 180' - ? )		180	200	20	200	
Sand				200	230	30	230	
Slate				230	250	20	250	
Lime				250	275	25	275	
Slate				275	325	50	325	
Lime				325	330	5	330	
Coal				330	336	6	336	
Slate				336	350	14	350	
Lime				350	400	50	400	
Red Rock				400	440	40	440	
Slate				440	460	20	460	
Sand			Water 515'	460m	525	65	525	
Slate				525	590	65	590	
Lime				590	598	8	598	
Pgh. Coal				598	603	5	603	
Lime				603	680	77	680	
Slate				680	700	20	700	
Red Rock				700	720	20	720	
Slate				720	800	80	800	
Lime				800	815	15	815	
Slate				815	830	15	830	
Lime		Gritty		830	920	90	920	
Red Rock				920	945	25	945	
Slate				945	948	3	948	
L. Dunkard				948	960	12	960	
Slate				960	1037	77	1037	
Big Dunkard				1037	1075	38	1075	
Slate				1075	1190	115	1190	
Gas Sand				1190	1235	45	1235	
Slate				1235	1245	10	1245	
Salt Sand				1245	1300	55	1300	
Slate				1300	1400	100	1400	
Salt Sand				1400	1505	105	1505	
Slate				1505	1590	85	1590	
Salt Sand				1590	1710	120	1710	
Slate				1710	1740	30	1740	
Salt Sand				1740	1750	10	1750	
Slate	Black			1750	1775	25	1775	
Marion				1775	1800	25	1800	
Slate				1800	1820	20	1820	
Lime				1820	1830	10	1830	
Pink Rock				1830	1842	12	1842	
Slate				1842	1850	8	1850	
Little Lime								
Pencil Cave		shot						

(over) →

Dodl.

COMPLETION DATA SHEET NO. 2

FORMATION RECORD

NAME	COLOR	CHARACTER	OIL, GAS OR WATER	TOP	BOTTOM	THICKNESS	TOTAL DEPTH	REMARKS
Blue Monday				1850'	1865'	15'	1865'	
Slate				1865	1872	7	1872	
Big Lime				1872	1950	78	1950	
Big Injun	(Show	Oil & Gas 2031' - 2036')		1950	2036	86	2036	
Slate				2036	2039	3	2039	
Squaw				2039	2050	11	2050	
Slate				m2050	2135	85	2135	
Gantz				2135	2310	175	2310	
Slate				2310	2380	70	2380	
Thirty Foot	50			2380	2390	10	2390	
Slate				2390	2455	65	2455	
Fifty Foot	30			2455	2480	25	2480	
Slate				2480	2554	74	2554	
Lime		Gritty		2554	2558	4	2558	
Shale				2558	2565	7	2565	
Shells		Gritty		2565	2577	12	2577	
Gordon				2577	2585	8	2585	
Slate				2585	2605	20	2605	
Shells		Gritty		2605	2608	3	2608	
Slate				2608	2681	73	2681	
TOTAL DEPTH * - - - - -							2681	

Well was not shot at \_\_\_\_\_ feet; well was shot at \_\_\_\_\_ feet.

Salt \_\_\_\_\_ salt  
 Fresh water at \_\_\_\_\_ feet; fresh water at \_\_\_\_\_ feet.

Well was ~~producing~~ hole. PHILADELPHIA OIL COMPANY,  
 dry

October 8th, 1929.  
 Date

Approved \_\_\_\_\_  
 OPERATING MANAGER.

NOTE: All bottom formations must be noted as indicated above and all key-rocks and oil and gas sands must be recorded under their proper geological names in the district as well as any local names for which strata that may be common to the district.