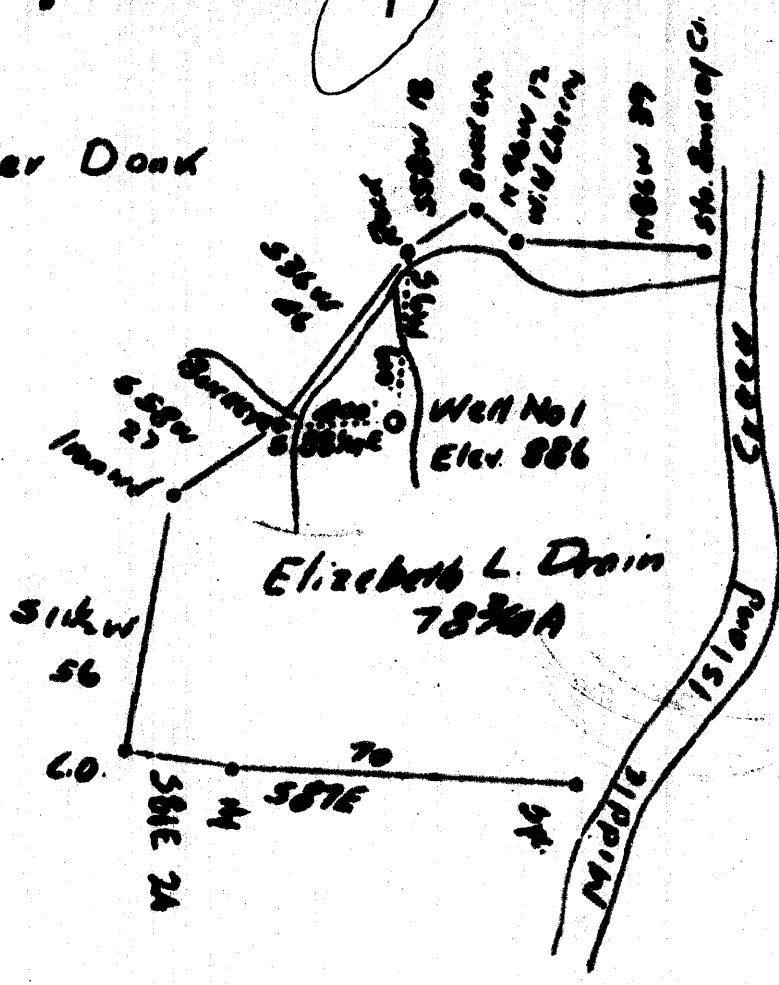


LATITUDE 39° 30'

LONGITUDE 80° 45'



Walter Doak



Walter Doak

3.49 W  
0.22 R

|                             |                    |             |                        |
|-----------------------------|--------------------|-------------|------------------------|
| Company                     | Luthor A. Pigott   |             |                        |
| Address                     | West Union, W. Va. |             |                        |
| Farm                        | Elizabeth L. Drain |             |                        |
| Tract One                   | Acres 78 3/4       | Lease No.   |                        |
| Well(Farm) No.              | One                | Serial No.  |                        |
| Quadrangle                  | West Union         |             | (JE)                   |
| County                      | Doddridge          |             |                        |
| District                    | West Union         |             |                        |
| Engineer                    | J. M. Martin       |             |                        |
| Engineer's Registration No. | 34                 |             |                        |
| File No.                    |                    | Drawing No. |                        |
| Date                        | 5-20-37            | Scale       | 1" = 40 P.<br>1" = 80' |

STATE OF WEST VIRGINIA  
 Department of Mines  
 OIL AND GAS DIVISION  
 Charleston

WELL LOCATION MAP

File No. DOD-74

+ Denotes location of well on U. S. Topographic Maps, scale 1 to 62,500 latitude and longitude lines being represented by border lines as shown.

— Denotes one inch spaces on border line of original tracing.

6-6 91

**WEST VIRGINIA DEPARTMENT OF MINES  
OIL AND GAS DIVISION**

**WELL RECORD**

Gas Well

Permit No. Dod-74

CASING & TUBING

West Union Quad.

|             |  |                  |      |      |
|-------------|--|------------------|------|------|
| Company     | Luther G. Pigott                           | 10               | 439  | None |
| Address     | West Union, W.Va.                          | 8 $\frac{1}{4}$  | 975  | "    |
| Farm        | Elizabeth Drane Acres 80                   | 6 $\frac{5}{8}$  | None |      |
| Location    | Middle Island Creek                        | 5 $\frac{3}{16}$ | 1788 | 1788 |
| Well No.    | 1  |                  |      |      |
| District    | West Union                                 |                  |      |      |
| Surface     | Walter Doak, West Union, W.Va.             |                  |      |      |
| Mineral     | Homer E. Drane & others, West Union, W.Va. |                  |      |      |
| Drilling    | Commenced June 7, 1937                     |                  |      |      |
|             | Completed Aug. 1, 1937                     |                  |      |      |
| Date Shot   | Oct. 1, 1937                               |                  |      |      |
| Volume      | 88,000 Cu.Ft.                              |                  |      |      |
| Rock Press. | 100# - 24 hrs.                             |                  |      |      |
|             | Elev. 886'                                 |                  |      |      |
|             | County Doddridge                           |                  |      |      |
|             | Depth 2489-2495                            |                  |      |      |

| Formation    | Color | Top | Base | Result | Formation | Color | Top | Base | Result |
|--------------|-------|-----|------|--------|-----------|-------|-----|------|--------|
| Sand         | Grey  | S   | 350  | 439    |           |       |     |      |        |
| Pg. Blossom  | Grey  | S   | 504  | 505    |           |       |     |      |        |
| Little Dunk. | Grey  | H   | 913  | 943    |           |       |     |      |        |
| Big Dunk.    | Grey  | H   | 965  | 1015   |           |       |     |      |        |
| Gas Sand     | Grey  | H   | 1105 | 1124   |           |       |     |      |        |
| 1st Salt S.  | Grey  | H   | 1130 | 1201   |           |       |     |      |        |
| 2nd. Salt S. | Grey  | H   | 1297 | 1365   |           |       |     |      |        |
| 3rd Salt S.  | Grey  | H   | 1338 | 1428   |           |       |     |      |        |
| Sand         | Grey  | H   | 1472 | 1595   |           |       |     |      |        |
| Maxon        | Grey  | H   | 1605 | 1675   |           |       |     |      |        |
| Little Lime  | Grey  | H   | 1735 | 1750   |           |       |     |      |        |
| Pencil Cave  | Grey  | S   | 1750 | 1770   |           |       |     |      |        |
| Big Lime     | Grey  | H   | 1770 | 1857   |           |       |     |      |        |
| In jun       | Grey  | H   | 1857 | 1937   |           |       |     |      |        |
| Squaw        | Grey  | H   | 1960 | 1985   |           |       |     |      |        |
| Gantz        | Grey  | H   | 2160 | 2200   |           |       |     |      |        |
| Gordon       | Grey  | H   | 2487 | 2496   |           |       |     |      |        |
| TOTAL DEPTH  |       |     |      | 2557   |           |       |     |      |        |
|              |       |     |      | Gas    |           |       |     |      |        |
|              |       |     |      | 2491   |           |       |     |      |        |
|              |       |     |      | Gas    |           |       |     |      |        |
|              |       |     |      | 2489   |           |       |     |      |        |
|              |       |     |      | 2492   |           |       |     |      |        |