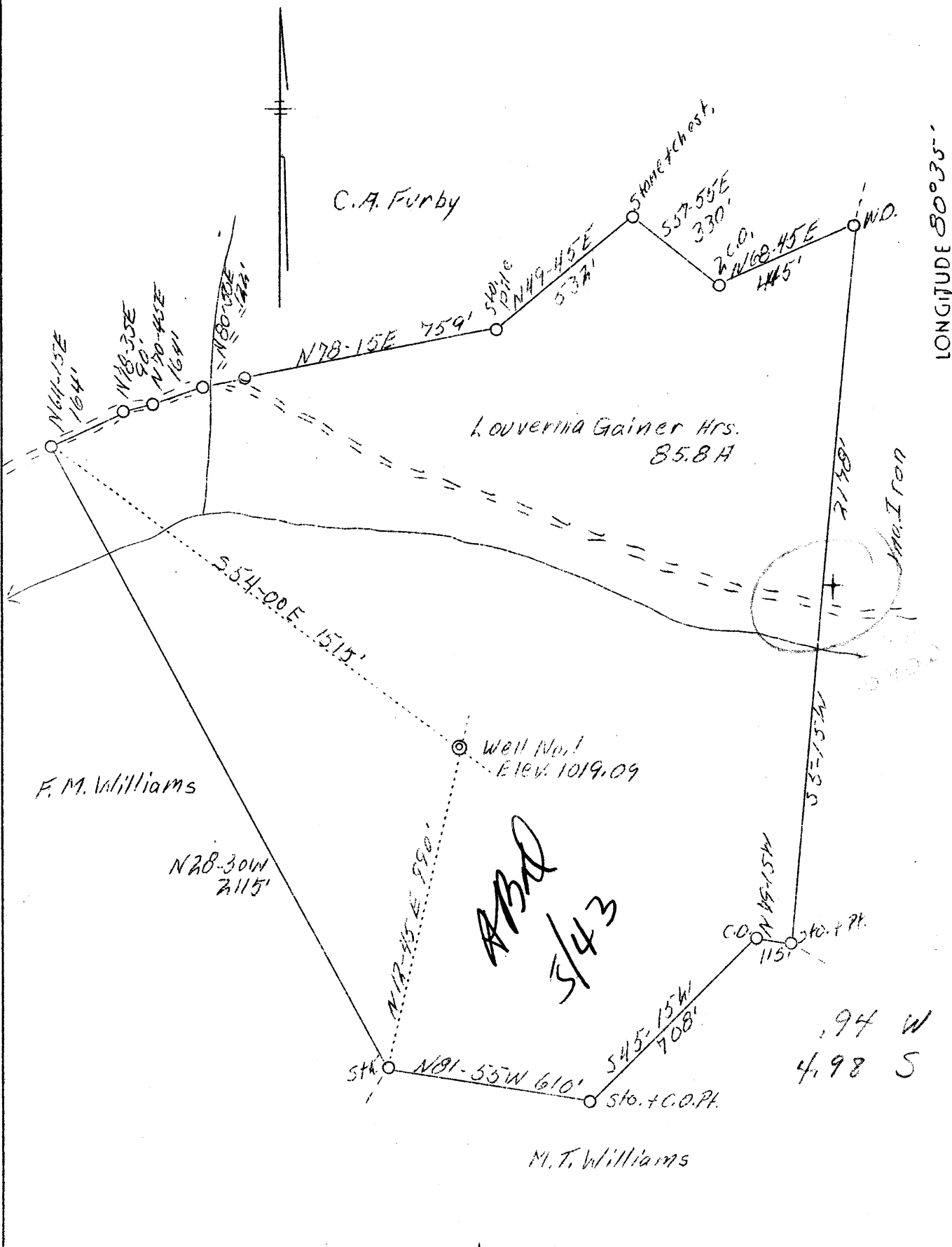


LATITUDE 39°20'

LONGITUDE 80°35'



Company O.E. Garrett Jr.
 Address Parkersburg, W.Va.
 Farm Louvernia Gainer Hrs.
 Acres 85.8
 Well (Farm) No. 1
 El. (S.L.) 1019.09
 Quadrangle Center Point
 County Doddridge SC
 District Greenbrier
 Eng. L.F. Dye
 Eng. Reg. NO. 804
 Date 4/25/39
 Scale 1" - 400'

STATE OF WEST VIRGINIA
 Department of Mines
 OIL AND GAS DIVISION
 Charleston

WELL LOCATION MAP
 File No. Dod-97

x Denotes location of well on U.S. Topographic Maps, scale 1 to 62,800, latitude and longitude lines being represented by border lines as shown.

- Denotes one inch spaces on border line of original tracing.

WEST VIRGINIA DEPARTMENT OF MINES
OIL & GAS DIVISION
W E L L R E C O R D

Permit No. Dod-97
Centerpoint Quad.

Oil Well

Company	O. E. Garrett, Jr.	10	CASING & TUBING	
Address	2507 Liberty St., Parkersburg, W. Va.	8-1/4	256	256
Farm	Loverna Gainer Hrs. ACRES 84	6-5/8	1207	1207
Location	Buffalo Calf Run		2084	2084
Well No.	1	ELEV. 1019.09	Perf. top - 2140	
District	Greenbrier - Doddridge County		" bot.-2150	
Surface	Wm. Irons, Salem, W. Va.			
Mineral	Loverna Gainer Hrs., Salem, W. Va.			
Commenced	May 29, 1939			
Completed	July 22, 1939			
Shot	7/25/39 - Depth 2153-2214			
Oil	12 bbls. 1st 24 hrs.			
Fresh Water	55 and 57			
Salt Water	1576 and 1585			

Red rock	r	s	0	30	
Lime	w	h	30	45	
Sand	wh	h	45	65	W 55
Red Rock	red	s	65	87	
Lime Shelves	wh	h	87	110	
Slate	blk	s	110	150	
Lime shelves	wh	h	150	200	
Gritty Lime	wh	h	200	211	
Slate	blk	s	211	213	
Lime	wh	h	213	225	
Slate	wh	s	225	355	
Sand	wh	s	355	458	
Slate	wh	s	458	505	
Lime	wh	h	505	525	
Slate	wh	s	525	575	
Lime	wh	h	575	605	
Slate-Shells	wh	s	605	758	
Lime	wh	h	758	774	
Slate-coal	blk	s	775	779	
Slate	wh	s	779	837	
Sand	wh	h	837	868	
Slate	wh	s	868	882	
Red Rock	red	s	882	908	
Slate	wh	s	908	940	
Lime	wh	h	940	959	
Red Rock	red	s	959	1040	
Lime	wh	h	1040	1049	
Big red	cave		1049	1120	
Lime	wh		1120	1129	
Red Rock	red	s	1129	1159	
Slate	wh	s	1159	1215	
Lime	wh	h	1215	1249	
Big D. Sand	wh		1249	1282	
Slate	blk	s	1282	1323	
1 sand	wh	h	1323	1397	
Slate&Shells	wh	s	1397	1565	W 1576
2 Salt Sand	wh	h	1565	1626	
Slate			1626	1690	
Salt Sand	wh	h	1690	1880	
Lime	wh	h	1880	1900	
Slate	drk	s	1900	1959	
Maxon Sand	wh	h	1959	1998	
Slate&Shells			1998	2035	
Little Lime	red	h	2035	2065	
Pencil Cave	blk	s	2065	2077	
Big Lime			2077	2129	Oil 2129-2133
Big Injun	wh	h	2129	2240	Oil at 2167-2177 gas at 2175
Slate	wh	s	2240	2245	Oil at 2207-2214

2077
150

2227
1019

1208