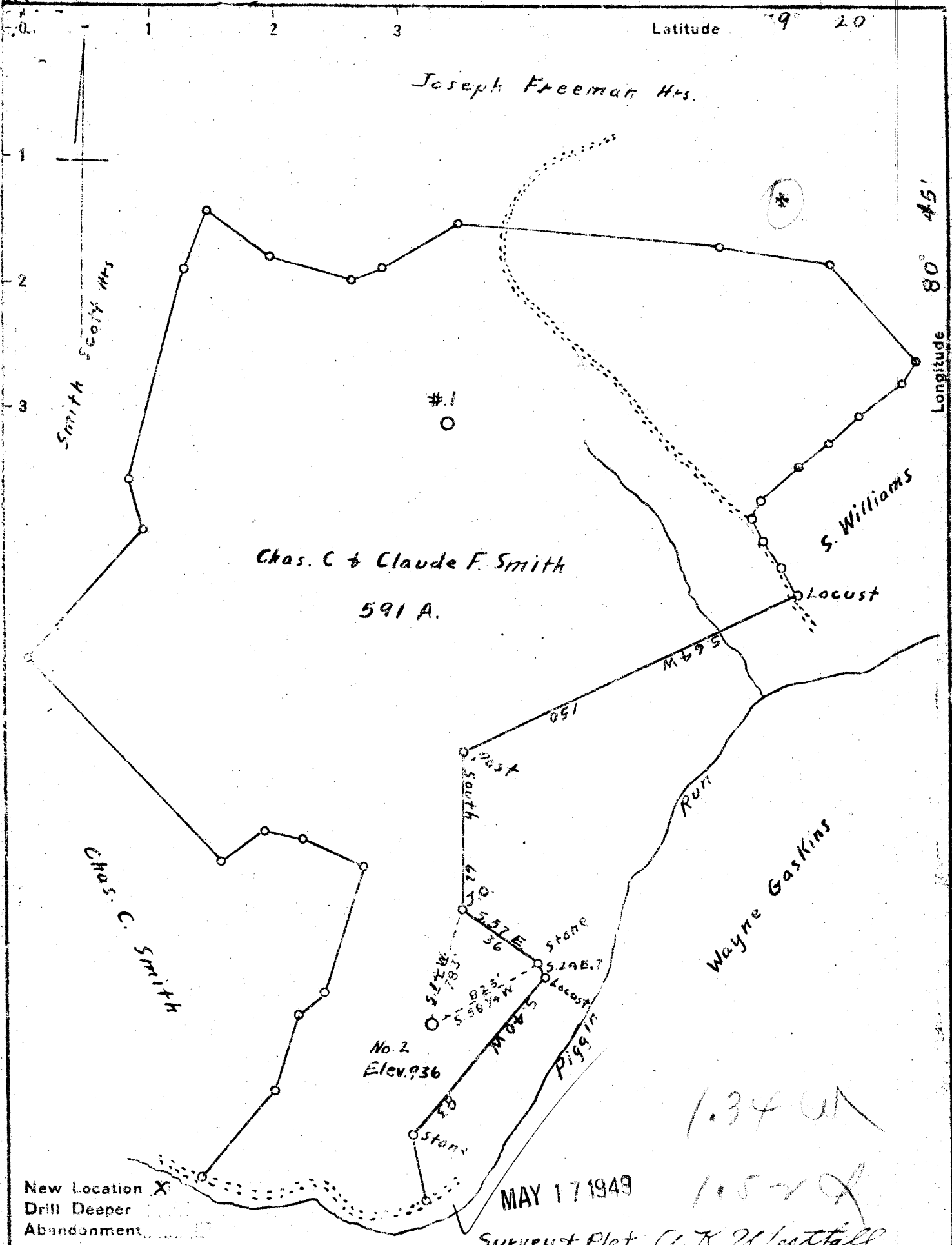


Joseph Freeman Hrs.



1.34 UN  
 1.57 UN  
 MAY 17 1949  
 Surveyor Plat C.K. Westfall

Company J.C. Smith  
 Address West Union, W. Va.  
 Farm Chas. C & Claude F. Smith  
 Tract \_\_\_\_\_ Acres 591 Lease No. \_\_\_\_\_  
 Well (Farm) No. 2 Serial No. \_\_\_\_\_  
 Elevation (Spirit Level) 936  
 Quadrangle West Union  
 County Doddridge District West Union  
 Engineer R. F. Kuehnt  
 Engineer's Registration No. 648  
 File No. \_\_\_\_\_ Drawing No. \_\_\_\_\_  
 Date April 26, 1949 Scale 1" = 50 Feet

STATE OF WEST VIRGINIA  
 DEPARTMENT OF MINES  
 OIL AND GAS DIVISION  
 CHARLESTON

**WELL LOCATION MAP**  
 FILE NO. DOD-192

+ Denotes location of well on United States Topographic Maps, scale 1 to 62,500, latitude and longitude lines being represented by border lines as shown.

- Denotes one inch spaces on border line of original tracing.

WEST VIRGINIA DEPARTMENT OF MINES  
OIL & GAS DIVISION  
W E L L R E C O R D

Permit No. Dod 192  
West Union Quad.

Dry Hole ?  
CASING & TUBING

Company	J.C. Smith		
Address	West Union, W.Va.	10	407
Farm	Charles & Claude F. Smith	A 591	8 1/2 1139
Location	Piggon Run		6 5/8 1921
Well No.	2	Elev. 936	
District	West Union	Doddridge	
Surface	Claude F. Smith, Moundsville, W.Va.		
Mineral	Chas. & Claude F. Smith, Moundsville, W.Va.		
Commenced	May 20, 1949		
Completed	July 1, 1949		
Date shot	July 9, 1949 Depth 2000 to 2009 with 200 lbs gelatin		
Open flow	21/10ths W in 1/2"		

SEP 30 1950

Surface Soil	0	13	Slate Shells	2105	2140
Sand	13	45	Berea & Shells	2140	2231
Red Rock	45	113	Gantz	2231	2375
Sand	113	130	Slate	2375	2423
Slate	130	170	Fifty Foot	2423	2453 <sup>Correct?</sup>
Sand	170	194	Slate Shells	2453	2515
Red Rock	194	254	Sand 30'	2515	2529
Slate & Shells	254	325	Slate & Shells	2529	2631
Lime	325	339	Stray Sand	2631	2653
Slate & Shell	339	375	Slate	2653	2668
Lime	375	400	Gordon Sand	Dry	2668
Red Rock	400	408	Slate	2676	2680
Sand	408	431			
Red Rock	431	435	Oil 2000-2006	shown	
Lime Reddish	435	475	Gas 2000-2006	14/10 W 1/2"	
Lime Shells	475	562	Gas 2015-2022	26/10 W 1/2"	
Red Rock	562	591			
Lime	591	618			
Coal Blossom	618	619			
Lime	619	641			
Slate & Shells	641	735			
Red Rock	735	751			
Sand	751	782			
Red Rock	782	860	There being no signs of any pay below		
Lime	Gritty 860	940	the Big Injun this well was filled		
Red Rock	940	1000	back up to the bottom of the Big Injun		
Lime	1000	1036	and shot in that pay sand.		
Red Rock	1036	1075			
Lime	1075	1080	It was filled in the Gordon Sand with Clay		
Sand	1080	1094	and Stone on top of same then filled with		
Slate Shell	1094	1135	clay to the bottom of Big Injun Sand and		
Sand Big Dunkard	1135	1162	a permanent bridge made at this point		
Slate Shells	1162	1271	for the purpose of holding oil if any		
Sand	1271	1330	could be made by shooting the pay Sand.		
Black Slate	1330	1359			
Lime Gritty	1359	1415	The total depth as it now is	2080	
Sand	1415	1450			
Slate	1450	1453			
Sand	1453	1542			
Slate Shells	1542	1617			
Sand	1617	1725			
Sand & Shells	1725	1751			
Sand	1751	1814			
Slate	1814	1830			
Lime Pink	1830	1860			
Sand	1860	1868			
Lime Black	-1868	1887			
Sand	1887	1900			
Lime Black	1900	1914			
Big Lime	-1914	1977			
Big Injun	1977	2038			
Lime Black	2038	2086			
Squaw Sand	2086	2105	Dry		



CHAS. & CLAUDE A. SMITH No. 2

J. C. SMITH -

DOD-192