

2

3

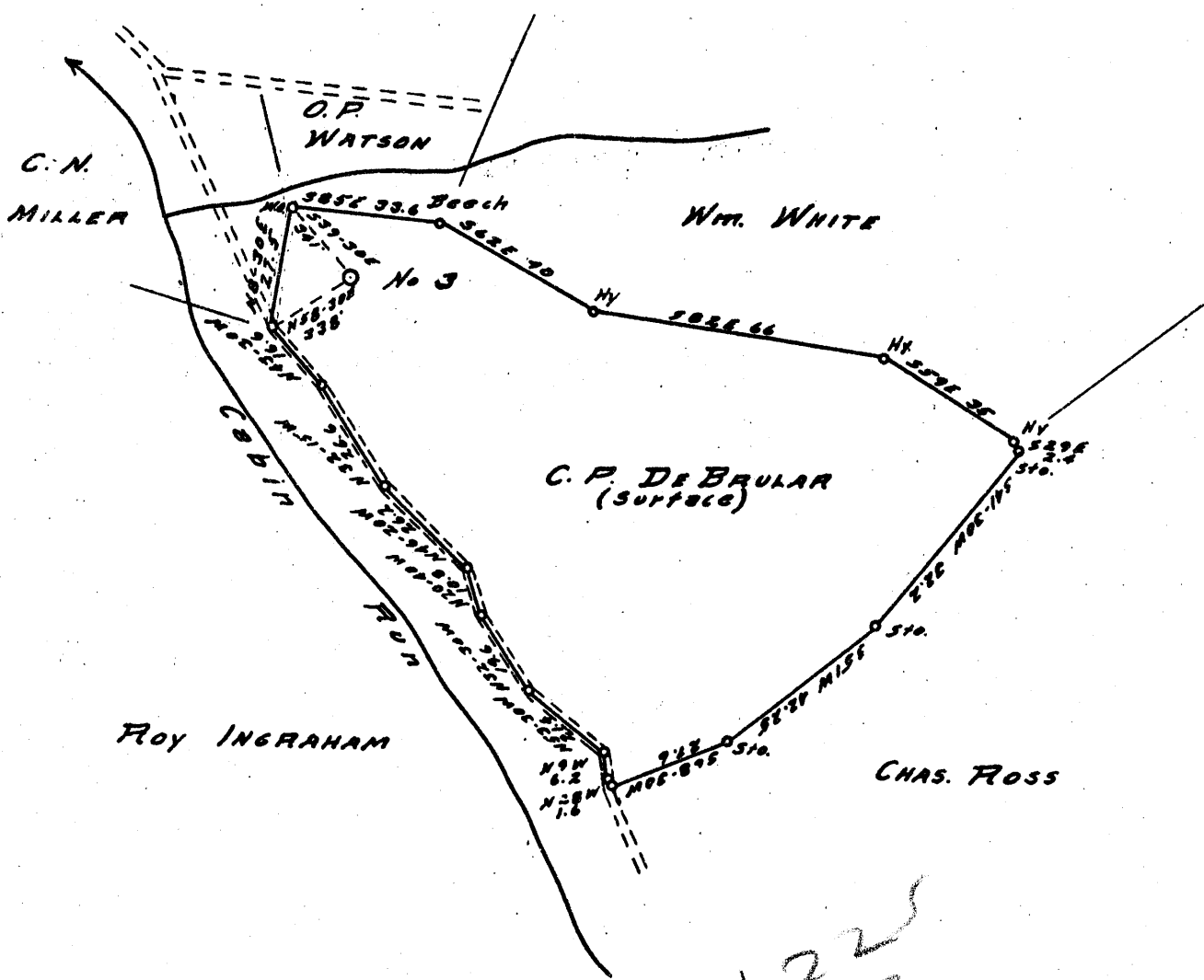
Latitude 39° 15'

Longitude 80° 50'

1

2

3



1.225  
2.33

- New Location...
- Drill Deeper.....
- Abandonment.....

Company H.L. PERNELL & LUTHER DAVIS  
 Address TOLL GATE W.V.A.  
 Farm C.E. ROSS  
 Tract \_\_\_\_\_ Acres 60 Lease No. \_\_\_\_\_  
 Well (Farm) No. J Serial No. \_\_\_\_\_  
 Elevation (Spirit Level) 924'  
 Quadrangle HOLBROOK NW & NE  
 County DODDGE District CENTRAL  
 Engineered by George R. Clark  
 Engineer R.L. SWEENEY  
 Engineer's Registration No. \_\_\_\_\_  
 File No. \_\_\_\_\_ Drawing No. 102  
 Date 1-16-55 Scale 1" = 40 FEET

STATE OF WEST VIRGINIA  
 DEPARTMENT OF MINES  
 OIL AND GAS DIVISION  
 CHARLESTON

WELL LOCATION MAP  
 FILE NO. DOD-212

+ Denotes location of well on United States Topographic Maps, scale 1 to 62,500, latitude and longitude lines being represented by border lines as shown.

- Denotes one inch spaces on border line of original tracing.

5-9 132



STATE OF WEST VIRGINIA  
DEPARTMENT OF MINES  
OIL AND GAS DIVISION <sup>3</sup>

Quadrangle Hallbrook

Permit No. D & D 212

WELL RECORD

Oil or Gas Well Gas  
(KIND)

Company Perrinell & Daring  
Address Well Gate  
Farm C E Roads Acres 60  
Location (waters) See in Record  
Well No. 3 Elev. 924'  
District Central County Doddridge  
The surface of tract is owned in fee by \_\_\_\_\_  
Address \_\_\_\_\_  
Mineral rights are owned by \_\_\_\_\_  
Address \_\_\_\_\_  
Drilling commenced Feb 7 1955  
Drilling completed April 10 " "  
Date Shot \_\_\_\_\_ From \_\_\_\_\_ To \_\_\_\_\_  
With \_\_\_\_\_

Casing and Tubing	Used in Drilling	Left in Well	Packers
Size			Kind of Packer
16			<u>Button Hole</u>
13			Size of <u>5 1/16</u>
10			Depth set <u>1934</u>
8 1/4	<u>525</u>		
6%	<u>1062</u>		
5 3/16	<u>1934</u>	<u>1934</u>	
3			Perf. top
2			Perf. bottom
Liners Used			Perf. top
			Perf. bottom

Open Flow \_\_\_\_\_ /10ths Water in \_\_\_\_\_ Inch  
\_\_\_\_\_ /10ths Merc. in \_\_\_\_\_ Inch  
Volume 113,000 Cu. Ft.  
Rock Pressure 570 lbs. 36 hrs.  
Oil \_\_\_\_\_ bbls., 1st 24 hrs.  
Fresh water \_\_\_\_\_ feet  
Salt water \_\_\_\_\_ feet

CASING CEMENTED \_\_\_\_\_ SIZE \_\_\_\_\_ No. Ft. \_\_\_\_\_ Date \_\_\_\_\_  
COAL WAS ENCOUNTERED AT 7 FEET \_\_\_\_\_ INCHES  
\_\_\_\_\_ FEET \_\_\_\_\_ INCHES  
\_\_\_\_\_ FEET \_\_\_\_\_ INCHES

Formation	Color	Hard or Soft	Top	Bottom	Oil, Gas or Water	Depth Found	Remarks
<u>Red Brn</u>	<u>R</u>	<u>Soft</u>	<u>0</u>	<u>10</u>			
<u>slates</u>			<u>10</u>	<u>65</u>			
<u>Red R</u>	<u>Red</u>	<u>" "</u>	<u>65</u>	<u>80</u>			
<u>slate</u>			<u>80</u>	<u>135</u>			
<u>Red R</u>			<u>135</u>	<u>150</u>			
<u>lime</u>			<u>150</u>	<u>165</u>			
<u>slate</u>			<u>165</u>	<u>175</u>			
<u>Red R</u>			<u>175</u>	<u>190</u>			
<u>slate</u>			<u>190</u>	<u>220</u>			
<u>lime</u>			<u>220</u>	<u>240</u>			
<u>Red R</u>			<u>240</u>	<u>315</u>			
<u>lime</u>			<u>315</u>	<u>357</u>			
<u>Red R</u>			<u>357</u>	<u>370</u>			
<u>slates</u>			<u>370</u>	<u>488</u>			
<u>Red R</u>			<u>488</u>	<u>560</u>			
<u>slate</u>			<u>560</u>	<u>605</u>			
<u>Red R</u>			<u>605</u>	<u>635</u>			
<u>slate</u>			<u>630</u>	<u>660</u>			
<u>lime</u>			<u>660</u>	<u>692</u>			
<u>slates</u>			<u>692</u>	<u>788</u>			
<u>Red R</u>			<u>788</u>	<u>793</u>			
<u>lime</u>			<u>793</u>	<u>805</u>			
<u>Red R</u>			<u>805</u>	<u>825</u>			
<u>lime</u>			<u>835</u>	<u>860</u>			
<u>Red R</u>			<u>860</u>	<u>895</u>			

