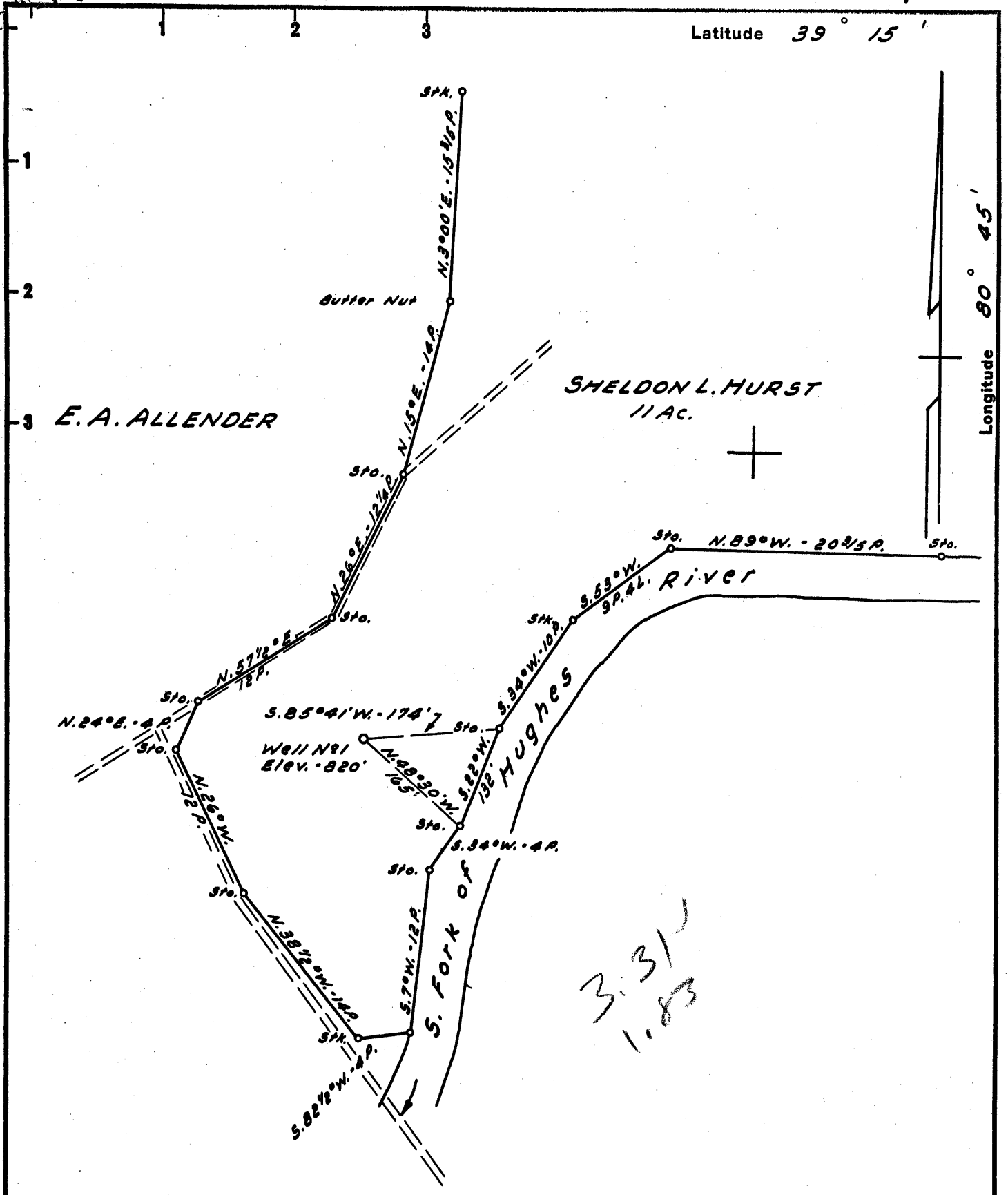


Latitude 39° 15'

Longitude 80° 45'



3.31  
1.83

- New Location..
- Drill Deeper.....
- Abandonment.....

Company HURST GAS CO.  
 Address 96 L. B. COFFMAN APT., SALEM, W. VA.  
 Farm SHELDON L. HURST  
 Tract \_\_\_\_\_ Acres 11 Lease No. \_\_\_\_\_  
 Well (Farm) No. 1 Serial No. \_\_\_\_\_  
 Elevation (Spirit Level) 820'  
 Quadrangle HOLBROOK - NE  
 County DOODRIDGE District SOUTH WEST  
 Engineer JOHN W. HAMILTON  
 Engineer's Registration No. 2274  
 File No. \_\_\_\_\_ Drawing No. \_\_\_\_\_  
 Date MAR. 8, 1958 Scale 1" = 10 POLES

STATE OF WEST VIRGINIA  
 DEPARTMENT OF MINES  
 OIL AND GAS DIVISION  
 CHARLESTON

**WELL LOCATION MAP**  
 FILE NO. DOD-245

+ Denotes location of well on United States Topographic Maps, scale 1 to 62,500, latitude and longitude lines being represented by border lines as shown.

- Denotes one inch spaces on border line of original tracing.



STATE OF WEST VIRGINIA  
DEPARTMENT OF MINES  
OIL AND GAS DIVISION 5

Quadrangle Holbrook

Permit No. DOD-245

WELL RECORD

Oil or Gas Well Dry  
(KIND)

Company Hurst Gas Company-L. B. Coffman, Agent  
 Address Salem, West Virginia  
 Farm Sheldon Hurst Acres 11  
 Location (waters) S. Fork of Hughes River  
 Well No. 1 Elev. 820'  
 District Southwest County Doddridge  
 The surface of tract is owned in fee by Sheldon Hurst,  
 Address Oxford, W. Va.  
 Mineral rights are owned by \_\_\_\_\_  
 Address \_\_\_\_\_  
 Drilling commenced April 15, 1958  
 Drilling completed May 20, 1958  
 Date Shot not shot From \_\_\_\_\_ To \_\_\_\_\_  
 With \_\_\_\_\_  
 Open Flow \_\_\_\_\_ /10ths Water in \_\_\_\_\_ Inch  
 \_\_\_\_\_ /10ths Merc. in \_\_\_\_\_ Inch  
 Volume \_\_\_\_\_ Cu. Ft.  
 Rock Pressure \_\_\_\_\_ lbs. \_\_\_\_\_ hrs.  
 Oil \_\_\_\_\_ bbls., 1st 24 hrs.  
 WELL ACIDIZED \_\_\_\_\_  
 WELL FRACTURED \_\_\_\_\_

Casing and Tubing	Used in Drilling	Left in Well	Packers
Size			Kind of Packer
16			
13			
10			Size of
8 3/4	285 ft.		
6 3/4	985 ft.		Depth set
5 3/16	1778 ft.		
3			Perf. top
2			Perf. bottom
Liners Used			Perf. top
			Perf. bottom

CASING CEMENTED \_\_\_\_\_ SIZE \_\_\_\_\_ No. Ft. \_\_\_\_\_ Date \_\_\_\_\_  
 COAL WAS ENCOUNTERED AT \_\_\_\_\_ FEET \_\_\_\_\_ INCHES  
 \_\_\_\_\_ FEET \_\_\_\_\_ INCHES FEET \_\_\_\_\_ INCHES  
 \_\_\_\_\_ FEET \_\_\_\_\_ INCHES FEET \_\_\_\_\_ INCHES

RESULT AFTER TREATMENT

ROCK PRESSURE AFTER TREATMENT

Fresh Water 760 Feet Salt Water 760 Feet

Formation	Color	Hard or Soft	Top	Bottom	Oil, Gas or Water	Depth	Remarks
Top soil			0	15			
Sand			15	25			
Red Rock			25	60			
Slate & shells			60	130			
Sand			130	145			
Slate & shells			145	185			
Lime			185	200			
Slate & shells			200	235			
Sand			235	243			
Slate			243	270			
Lime			270	283			
Red Rock			283	355			
Slate			355	370			
Sand			370	385			
Slate & shells			385	410			
Red Rock			410	455			
Slate			455	490			
Lime			490	505			
Slate & shells			505	540			
Lime			540	548			
Red Rock			548	595			
Slate & shells			595	620			
Red Rock			620	720			
Lime			720	752			
Slate & shells			752	835			
Red Rock			835	875			
Slate & shells			875	955			
Lime gritty			955	965			
Slate & shells			965	985			
Sand			985	1025			

Formation	Color	Hard or Soft	Top <sup>5'</sup>	Bottom	Oil, Gas or Water	Depth Found	Remarks
Slate & shells			1025	1090			
Lime gritty			1090	1115			
Slate & shells			1115	1175			
Sand			1175	1185			
Slate & shells			1185	1205			
Sand			1205	1230			
Slate & shells			1230	1294			
Sand			1294	1330			
Slate & shells			1330	1390			
Sand			1390	1452			
Black slate			1452	1462			
Sand			1462	1600			
Black slate			1600	1622			
Sand			1622	1628			
Black slate			1628	1655			
Slate & shells			1655	1705			
Sand			1705	1720			
Slate & shells			1720	1730			
Sand			1730	1738			
Slate			1738	1750			
B. Lime			1750	1832			
Enjin Sand			1832	1875			
Shale			1875	1895			

Date \_\_\_\_\_, 19\_\_\_\_

APPROVED \_\_\_\_\_, Owner

By \_\_\_\_\_  
(Title)