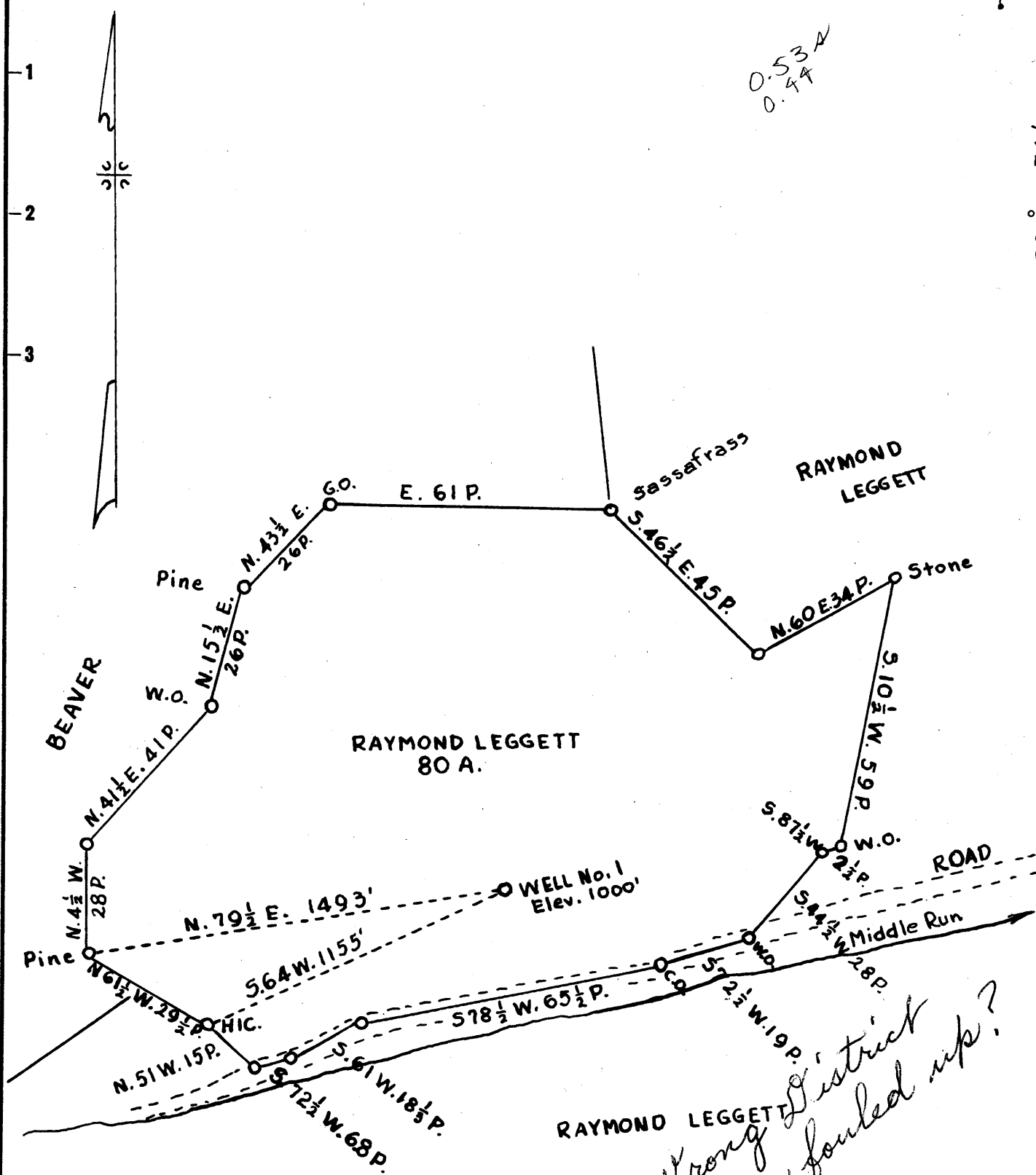


Latitude 39° 15'

Longitude 80° 50'



- New Location
- Drill Deeper
- Abandonment

4-20-60

NOW: DONALD G. MICHELS  
WEST UNION, W. VA.

*Wrong District  
Surveyor fouled up?*

Company Inco, 3, Inc. Oil & Gas Co. C. F. Michals Agt.

Address P.O. Box 215, West Union, W. Va.

Farm Raymond Leggett

Tract 1 Acres 80 Lease No. \_\_\_\_\_

Well (Farm) No. 1 Serial No. \_\_\_\_\_

Elevation (Spirit Level) 1000'

Quadrangle Halbrook *NC*

County Doddridge District West Union *Central*

Engineer Parker E. Peters

Field - W. P. Ireland  
Engineer's Registration No. 485

File No. \_\_\_\_\_ Drawing No. \_\_\_\_\_

Date Aug. 19, 1959 Scale 1" = 30 P.

STATE OF WEST VIRGINIA  
DEPARTMENT OF MINES  
OIL AND GAS DIVISION  
CHARLESTON

### WELL LOCATION MAP

FILE NO. 000-283-REVISED

+ Denotes location of well on United States Topographic Maps, scale 1 to 62,500, latitude and longitude lines being represented by border lines as shown.

- Denotes one inch spaces on border line of original tracing.



STATE OF WEST VIRGINIA  
DEPARTMENT OF MINES  
OIL AND GAS DIVISION 2

Quadrangle Holbrook

Permit No. DOD-283- Revised

*Same record for 285*

**WELL RECORD**

Oil or Gas Well Both  
(KIND)

Company Donald G. Michels  
Address West Union, W.Va.  
Farm Ralph Leggett Acres 108  
Location (waters) Cabin Run  
Well No. 1 Elev. 909'  
District Central County Doddridge  
The surface of tract is owned in fee by Ralph Leggett and wife  
Address \_\_\_\_\_  
Mineral rights are owned by Ralph Leggett and wife  
Address \_\_\_\_\_

Casing and Tubing	Used in Drilling	Left in Well	Packers
Size			Kind of Packer
16			
13			
10		20'	Size of
8 1/4	338'		
6 3/4	1061'		Depth set
5 3/16		1954'	
3			Perf. top
2		2048'	Perf. bottom
Liners Used			Perf. top
			Perf. bottom

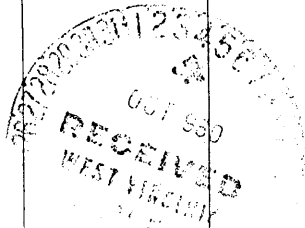
Drilling commenced 4/20/60  
Drilling completed 5/25/60  
Date Shot \_\_\_\_\_ From \_\_\_\_\_ To \_\_\_\_\_  
With \_\_\_\_\_  
Open Flow \_\_\_\_\_ /10ths Water in \_\_\_\_\_ Inch  
\_\_\_\_\_ /10ths Merc. in \_\_\_\_\_ Inch  
Volume 675,000 Cu. Ft.  
Rock Pressure 285 lbs. 24 hrs.  
Oil \_\_\_\_\_ bbls., 1st 24 hrs.  
WELL ACIDIZED \_\_\_\_\_

CASING CEMENTED Yes SIZE 5 1/2" No. Ft. 1950' Date 5/6/60  
16 sks. Portland Cement  
500# Aquagel - Garaton Service  
COAL WAS ENCOUNTERED AT \_\_\_\_\_ FEET \_\_\_\_\_ INCHES  
\_\_\_\_\_ FEET \_\_\_\_\_ INCHES FEET \_\_\_\_\_ INCHES  
\_\_\_\_\_ FEET \_\_\_\_\_ INCHES FEET \_\_\_\_\_ INCHES

WELL FRACTURED 5/23/60

RESULT AFTER TREATMENT 1,060,000  
ROCK PRESSURE AFTER TREATMENT 310 - 24 hrs.  
Fresh Water \_\_\_\_\_ Feet Salt Water \_\_\_\_\_ Feet

Formation	Color	Hard or Soft	Top	Bottom	Oil, Gas or Water	Depth	Remarks
Clay	Yellow	Soft	0	15			
Sand			15	30			
Slate			30	60			
Red Rock			60	70			
Slate			70	100			Water
Red Rock			100	140			
White slate			140	180			
Lime Shells			180	190			
Slate			190	194			
Lime			194	220			
Red Rock			220	235			
Lime			235	245			
Red Rock			245	285			
Lime			285	300			
Gray Slate			300	320			
Red Rock			320	340			
Lime			340	370			
Lime Shells and slate			370	430			
Red Rock			430	470			
Lime			470	488			
Red Rock			488	500			
Lime Shells		Hard	500	765			Gritty
Red Rock			765	805			
Lime & slate			805	830			
Red Rock			830	860			
Lime			860	895			
Red Rock			895	930			
Lime			930	960			
Slate	Black		960	980			



Formation	Color	Hard or Soft	Top 2	Bottom	Oil, Gas or Water	Depth Found	Remarks
Lime			980	1000			
Red Rock			1000	1020			
Lime			1020	1035			
Red Rock			1035	1050			
Lime			1048	1100			
Sand			1100	1148			
Lime			1148	1285			
Sand	1285		1285	1285			
gypsum slate			1285	1315			
gypsum			1315	1370			
slate	Gray		1370	1400			
lime shells			1400	1420			
lime	White		1430	1455			
1st. Sand			1455	1485			
Gray slate			1485	1570			Water (one bailer per hour)
2nd. S. Sand			1570	1610			
Gray slate			1610	1630			
3rd. S. Sand			1630	1718			
Black slate			1718	1785			
M. sands & lime			1785	1840			
gritty lime			1840	1855			
lime shells			1855	1865			
Red Rock			1865	1872			
Gray slate			1872	1890			
L. lime			1890	1910			
pencil Gave			1910	1922			
Big lime			1922	2016			
Injun Sand			2016				
	light	Hard	2025	2032			Gas
	light		2033	2035			Oil
	light		2035	2036			
	Dark		2036	2038			Oil
	Very dark	Very hard	2038	2045			
	Light		2045	2051			Oil
				2052	Total Depth		

Date Oct. 1, 1860

APPROVED \_\_\_\_\_, Owner

By \_\_\_\_\_ (Title)