

New Location

Drill Deeper

Abandonment  9-23-74

NOTE: Henry Frey owns in Fee

Company ~~BROOKSMAN-GRAHAM~~ ~~HOCKANS~~ Stonestreet Leads Company  
 Address ~~WEST UNION, W. VA.~~ Spencer, WVA  
 Farm HENRY FREY  
 Tract \_\_\_\_\_ Acres 0.51 Lease No. \_\_\_\_\_  
 Well (Farm) No. 1 Serial No. \_\_\_\_\_  
 Elevation (Spirit Level) 765'  
 Quadrangle WEST UNION SE  
 County DODDRIDGE District WEST UNION  
 Engineer JOHN W. HAMILTON  
 Engineer's Registration No. 2274  
 File No. \_\_\_\_\_ Drawing No. \_\_\_\_\_  
 Date MARCH 12, 1960 Scale 1" = 40'

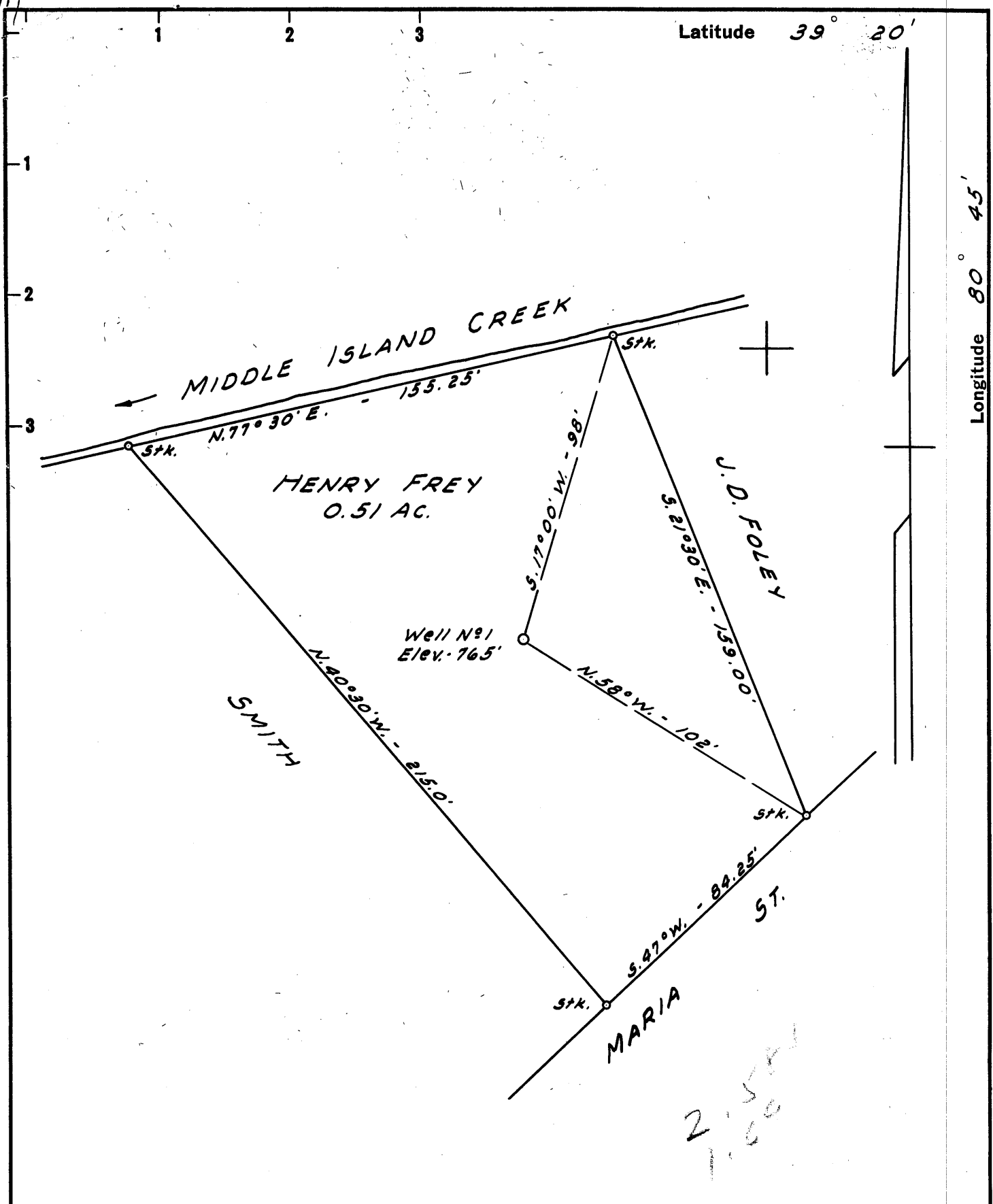
STATE OF WEST VIRGINIA  
 DEPARTMENT OF MINES  
 OIL AND GAS DIVISION  
 CHARLESTON

**WELL LOCATION MAP**  
 FILE NO. DOD-326-P

+ Denotes location of well on United States Topographic Maps, scale 1 to 62,500, latitude and longitude lines being represented by border lines as shown.

- Denotes one inch spaces on border line of original tracing.

47-017



New Location   
 Drill Deeper   
 Abandonment

NOTE:  
 Henry Frey owns in Fee

2.58  
 1.00

Company	DROPPLEMAN - GRAHAM - HOLLAND	
Address	WEST UNION, W. VA.	
Farm	HENRY FREY	
Tract	Acres	Lease No.
	0.51	
Well (Farm) No.	1	Serial No.
Elevation (Spirit Level)	765'	
Quadrangle	WEST UNION - SE	
County	DODDRIDGE	District WEST UNION
Engineer	JOHN W. HAMILTON	
Engineer's Registration No.	2274	
File No.	Drawing No.	
Date	MARCH 12, 1960 Scale 1" = 40'	

STATE OF WEST VIRGINIA  
 DEPARTMENT OF MINES  
 OIL AND GAS DIVISION  
 CHARLESTON

**WELL LOCATION MAP**  
 FILE NO. DOD-326

+ Denotes location of well on United States Topographic Maps, scale 1 to 62,500, latitude and longitude lines being represented by border lines as shown.

- Denotes one inch spaces on border line of original tracing.

too crowded to plot



STATE OF WEST VIRGINIA  
DEPARTMENT OF MINES  
OIL AND GAS DIVISION 4

Quadrangle West Union

WELL RECORD

Permit No. DOD-326

Oil or Gas Well Oil & Gas  
(KIND)

Company Droppleman-Graham-Holland  
Address West Union, West Virginia  
Farm Henry Troy Acres 0.51  
Location (waters) Middleland  
Well No. 1 Elev. 765'  
District West Union County Doddridge  
The surface of tract is owned in fee by Henry Troy Address West Union, W. Va.  
Mineral rights are owned by Henry Troy Address West Union, W. Va.  
Drilling commenced April 15, 1960  
Drilling completed May 17, 1960  
Date Shot From To  
With  
Open Flow /10ths Water in Inch  
/10ths Merc. in Inch  
Volume 521,000 Cu. Ft.  
Rock Pressure 180# lbs. 8 hrs. hrs.  
Oil 2 bbl. bbls., 1st 24 hrs.  
WELL ACIDIZED NO  
500 gal. 15% used with frac-  
WELL FRACTURED BY Haliburton

Casing and Tubing	Used in Drilling	Left in Well	Packers
Size			Kind of Packer
16	24'	24'	
13			
10	160'		Size of
8 1/2	812'		
6 1/2			Depth set
5 3/16	1724'	1724'	
3			Perf. top
2		1775'	Perf. bottom
Liners Used			Perf. top
			Perf. bottom

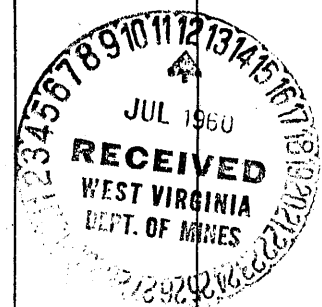
CASING CEMENTED 5 1/2" SIZE 302' No. Ft. 5/12/60 Date  
Haliburton O.W.C. Co. Lynch, Okla.  
15 lbs cement - 7 hrs. 9 lbs.  
COAL WAS ENCOUNTERED AT 10 FEET INCHES  
None FEET INCHES FEET INCHES  
FEET INCHES FEET INCHES

RESULT AFTER TREATMENT No increase

ROCK PRESSURE AFTER TREATMENT 175#

Fresh Water none Feet Salt Water Feet

Formation	Color	Hard or Soft	Top	Bottom	Oil, Gas or Water	Depth	Remarks
Sand			0	16'			
Red rock		h	16'	40'	water		
Slate	G.	h	40'	135'			
Sand	R	s	135'	150'			
Slate	R	h	150'	160'			
Red rock	R	s	160'	205'			
Slate		h	205'	220'	water		
Sand		h	220'	232'			
Slate	R	h	232'	285'			
Red rock	-	s	285'	310'			
Slate			310'	345'			
Lime			345'	365'			
Slate			365'	468'			
Red rock			468'	490'			
Slate			490'	520'			
Red rock			520'	540'			
Lime			540'	552'			
Red rock			552'	600'			
Slate			600'	675'			
Red rock			675'	695'			
Lime			695'	760'			
Red rock			760'	775'			
Slate			775'	835'			
Big slate			835'	850'			
Slate			850'	865'			
Sand			865'	912'			
Slate			912'	955'			
Sand			955'	980'			
Slate			980'	1000'			



Formation	Color	Hard or Soft	Top <i>4</i>	Bottom	Oil, Gas or Water	Depth Found	Remarks
Line			1000'	1065'			
Big slate			1065'	1100'			
Sand			1100'	1130'			
Slate	Black		1130'	1155'			
Slate & Lime			1155'	1230'			
Slate			1230'	1250'			
Sand			1250'	1310'			
Slate & Lime			1310'	1365'			
Sand			1365'	1455'			
Slate			1455'	1535'			
Sand			1535'	1560'			
Slate			1560'	1585'			
Red rock			1585'	1595'			
Slate			1595'	1600'			
Lime			1600'	1640'			
Slate			1640'	1650'			
Lime			1650'	1724'			
Injan sand		Soft	1724'	1820'	Gas	1727' 1734'	
" "		Hard	1764'	1780'	Gas & Oil	1764'	
Slate		"	1820'	1836'			
Total Depth				1836'			