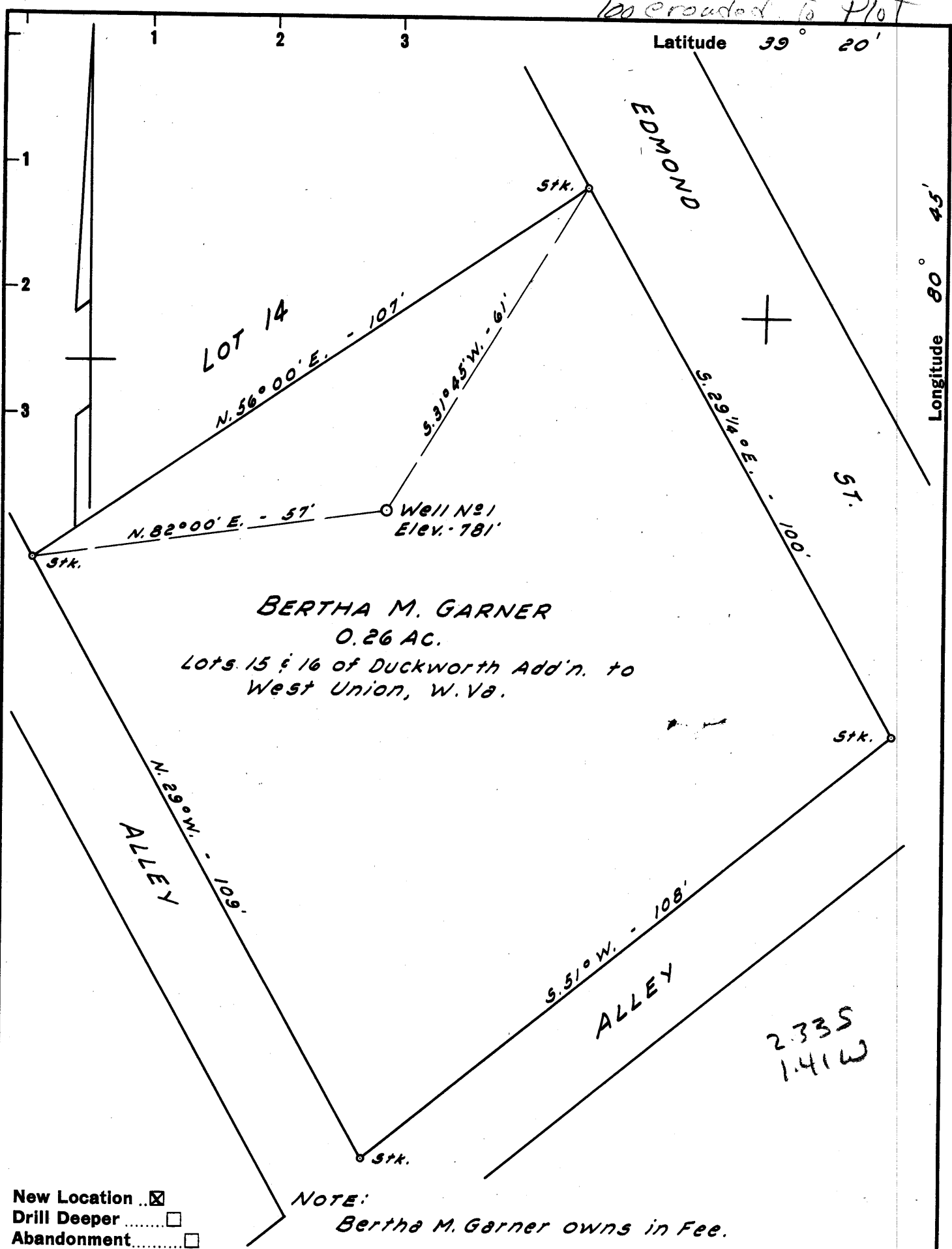


Too crowded to Plot



BERTHA M. GARNER
 0.26 AC.
 Lots 15 & 16 of Duckworth Add'n. to
 West Union, W. Va.

NOTE:
 Bertha M. Garner owns in Fee.

New Location
 Drill Deeper
 Abandonment

2335
 141W

Company ALLEN & BRUKENFELD
 Address BOX 176 WEST UNION, W. VA.
 Farm BERTHA M. GARNER
 Tract _____ Acres 0.26 Lease No. _____
 Well (Farm) No. 1 Serial No. _____
 Elevation (Spirit Level) 781'
 Quadrangle WEST UNION SK
 County DODDRIDGE District WEST UNION
 Engineer JOHN W. HAMILTON
 Engineer's Registration No. 2274
 File No. _____ Drawing No. _____
 Date APRIL 20, 1960 Scale 1" = 20'

STATE OF WEST VIRGINIA
 DEPARTMENT OF MINES
 OIL AND GAS DIVISION
 CHARLESTON

WELL LOCATION MAP
 FILE NO. DoD-368

+ Denotes location of well on United States Topographic Maps, scale 1 to 62,500, latitude and longitude lines being represented by border lines as shown.

- Denotes one inch spaces on border line of original tracing.