

No coal
 Surface: - Floyd Sibert,
 Box 205
 West Union, W. Va.

New Location
 Drill Deeper
 Abandonment - 2-26-75

UNITED DRILLING AND EXPLORATION COMPANY
 Company ~~WATKINS~~
 C/O MR. JACK WEBBER
 Address ~~Box 205, West Union, W. Va.~~
 Farm Claude Smith, et al
 Tract Acres 108 Lease No.
 Well (Farm) No. Three Serial No.
 Elevation (Spirit Level) 1182'
 Quadrangle West Union SE
 County Doddridge District West Union
 Engineer W. A. Stewart
 Engineer's Registration No. 1227
 File No. Drawing No.
 Date June, 1960 Scale 1" = 400'

STATE OF WEST VIRGINIA
 DEPARTMENT OF MINES
 OIL AND GAS DIVISION
 CHARLESTON

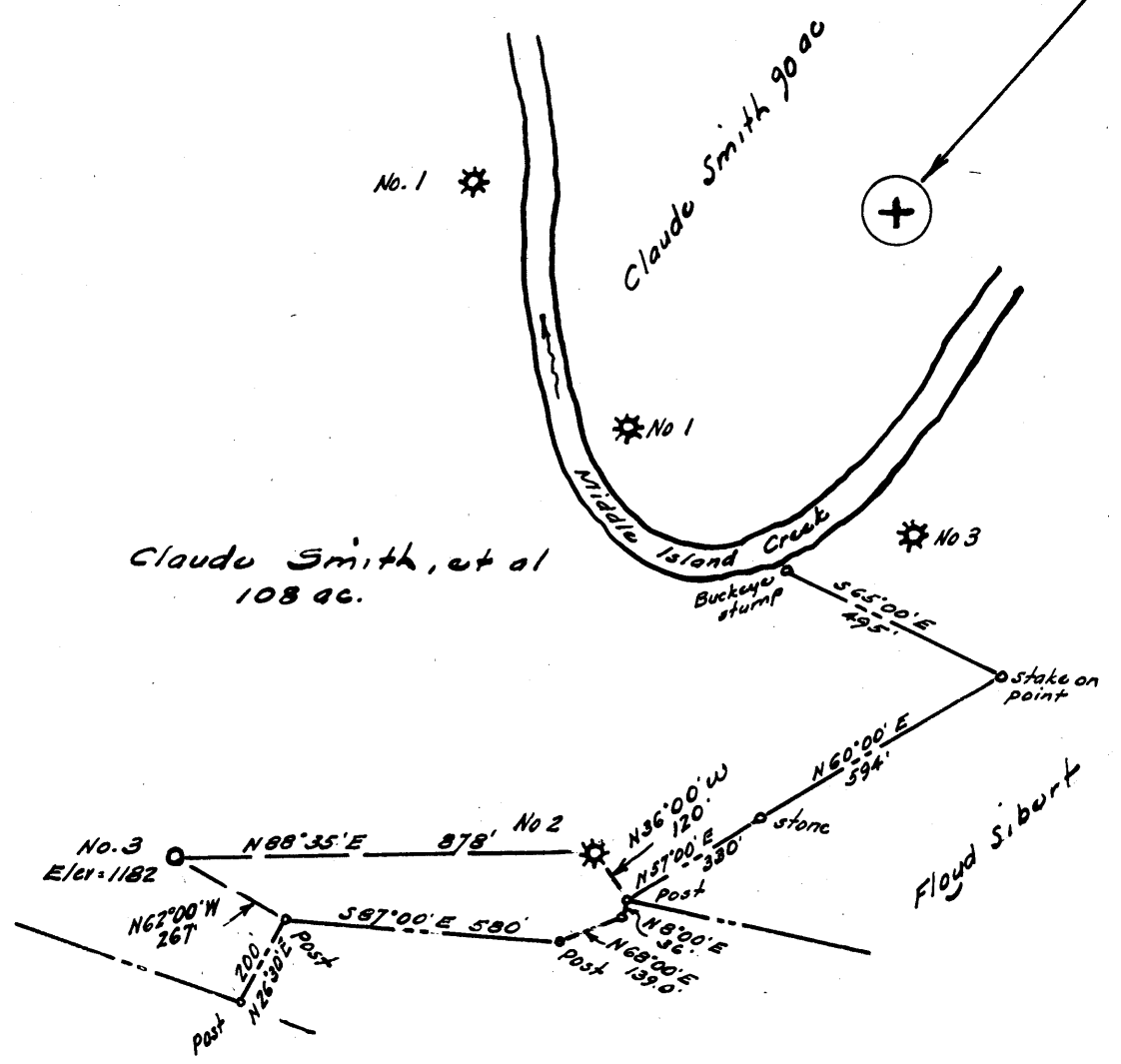
WELL LOCATION MAP
 FILE NO. DOD - 395 - P

+ Denotes location of well on United States Topographic Maps, scale 1 to 62,500, latitude and longitude lines being represented by border lines as shown.
 - Denotes one inch spaces on border line of original tracing.

47-017

Latitude 39° 20'

Longitude 80° 45'



McClain Heights Addn.

2.535
2.177

No coal
Surface:- Floyd Sibert,
Box 205
West Union, W. Va.

New Location ..
Drill Deeper
Abandonment

Company SMITH AND SIBERT
 Address Box 205, West Union, W. Va.
 Farm Claude Smith, et al
 Tract _____ Acres 108 Lease No. _____
 Well (Farm) No. Three Serial No. _____
 Elevation (Spirit Level) 1182'
 Quadrangle West Union SE
 County Doddridge District West Union
 Engineer W. H. Stetson Jr.
 Engineer's Registration No. 1227
 File No. _____ Drawing No. _____
 Date June, 1960 Scale 1" = 400'

STATE OF WEST VIRGINIA
 DEPARTMENT OF MINES
 OIL AND GAS DIVISION
 CHARLESTON

WELL LOCATION MAP
 FILE NO. DDO - 395

+ Denotes location of well on United States Topographic Maps, scale 1 to 62,500, latitude and longitude lines being represented by border lines as shown.

- Denotes one inch spaces on border line of original tracing.

6-6 99



STATE OF WEST VIRGINIA
DEPARTMENT OF MINES
OIL AND GAS DIVISION 5

Quadrangle West Union

Permit No. DOD-395

WELL RECORD

Oil or Gas Well Oil & Gas
(KIND)

Company Sibert and Smith
Address P.O. Box 205 West Union, W. Va.
Farm Floyd W. Sibert Acres 108
Location (waters) Middle Island Creek
Well No. Claud F. Smith Lease #9 Elev. 1182
District West Union County Doddridge
The surface of tract is owned in fee by Floyd W. Sibert
Address West Union W. Va.
Mineral rights are owned by C.F. Smith & others
Address West Union, W. Va.

Drilling commenced June 8th 1960
Drilling completed July 19- 1960
Date Shot _____ From _____ To _____
With _____

Open Flow _____ /10ths Water in _____ Inch
_____ /10ths Merc. in _____ Inch
Volume _____ Cu. Ft.
Rock Pressure 300 lbs. One hrs.
Oil Good show Oil bbls., 1st 24 hrs.

WELL ACIDIZED _____

WELL FRACTURED 8/2//1960

| Casing and Tubing | Used in Drilling | Left in Well | Packers |
|-------------------|------------------|--------------|-------------------------------------|
| Size | | | Kind of Packer |
| 16 | | | |
| 13 | | | |
| 10 | | | Size of |
| 8 3/4 | 309 | | |
| 6 3/4 | 1243 | | Depth set |
| 5 3/16 | 2118 | 2118 | |
| 3 | | | Perf. top |
| 2 | | | Perf. bottom |
| Liners Used 4 1/2 | | 160 | Perf. top 9 10 Perf. bottom 4 |

CASING CEMENTED 250 SIZE 5-1/2 No. Ft. 7/7/60 Date
Liner " 156 " 4 1/2 7/23/60
15 sks. Cement - 4 sks. Aquagel - Garaton Service
COAL WAS ENCOUNTERED AT _____ FEET _____ INCHES
_____ FEET _____ INCHES
_____ FEET _____ INCHES

RESULT AFTER TREATMENT 300 40/10 water in 5"

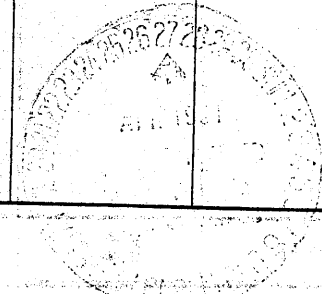
ROCK PRESSURE AFTER TREATMENT 300 24 Hours

1,500 MCE

Fresh Water _____ Feet _____ Salt Water _____ Feet

| Formation | Color | Hard or Soft | Top | Bottom | Oil, Gas or Water | Depth | Remarks |
|----------------|-------|--------------|-----|--------|-------------------|-------|---------|
| Surface | grey | | 0 | 25 | | | |
| Red rock | | | 25 | 50 | | | |
| Slate | | | 50 | 95 | | | |
| Red rock | | | 95 | 140 | | | |
| Sand | | | 140 | 165 | | | |
| Slate | | | 165 | 185 | | | |
| Red rock | | | 185 | 245 | | | |
| Slate blue | | | 245 | 255 | | | |
| Red rock | | | 255 | 285 | | | |
| Slate blue | | | 285 | 340 | | | |
| Sand grey | | | 340 | 360 | | | |
| Slate | | | 360 | 400 | | | |
| Red rock | | | 400 | 500 | | | |
| Slate blue | | | 500 | 565 | | | |
| Lime | | | 565 | 590 | | | |
| Red rock | | | 590 | 605 | | | |
| Slate grey | | | 605 | 620 | | | |
| Red rock | | | 620 | 670 | | | |
| Slate blue | | | 670 | 735 | | | |
| Red rock | | | 735 | 770 | | | |
| Slate blue | | | 770 | 790 | | | |
| Lime | | | 790 | 830 | | | |
| Slate blue | | | 830 | 875 | | | |
| Red rock | | | 875 | 900 | | | |
| Lime | | | 900 | 930 | | | |
| Red rock | | | 930 | 995 | | | |
| Slate & shells | | | 995 | 1070 | | | |

(over)



| Formation | Color | Hard or Soft | Top 5 | Bottom | Oil, Gas or Water | Depth Found | Remarks |
|----------------|-------|--------------|-------|--------|-------------------|-------------|---------|
| Lime grey | | | 1070 | 1100 | | | |
| Slate blue | | | 1100 | 1135 | | | |
| Red rock | | | 1135 | 1155 | | | |
| Slate blue | | | 1155 | 1190 | | | |
| Slate black | | | 1190 | 1220 | | | |
| Rock pink | | | 1220 | 1223 | | | |
| Slate & shells | | | 1223 | 1365 | | | |
| Lime | | | 1365 | 1410 | | | |
| Slate blue | | | 1410 | 1430 | | | |
| Lime shells | | | 1430 | 1455 | | | |
| Sand grey | | | 1455 | 1500 | | | |
| Slate blue | | | 1500 | 1612 | | | |
| Sand | | | 1612 | 1675 | | | |
| Slate black | | | 1675 | 1745 | | | |
| Sand | | | 1745 | 1795 | | | |
| Slate & shells | | | 1795 | 1860 | | | |
| Sand Maxon | | | 1860 | 1898 | | | |
| Slate blue | | | 1898 | 1920 | | | |
| Lime | | | 1920 | 1950 | | | |
| Sand grey | | | 1950 | 1978 | | | |
| Slate blue | | | 1978 | 2072 | | | |
| Lime | | | 2072 | 2037 | | | |
| Pencil | | | 2037 | 2092 | | | |
| Big lime | | | 2092 | 2186 | | | |
| Sand Big Ingun | | | 2186 | 2253 | Show Oil & Gas | 2205-2221 | |
| | | Total Depth | 2253 | | | | |