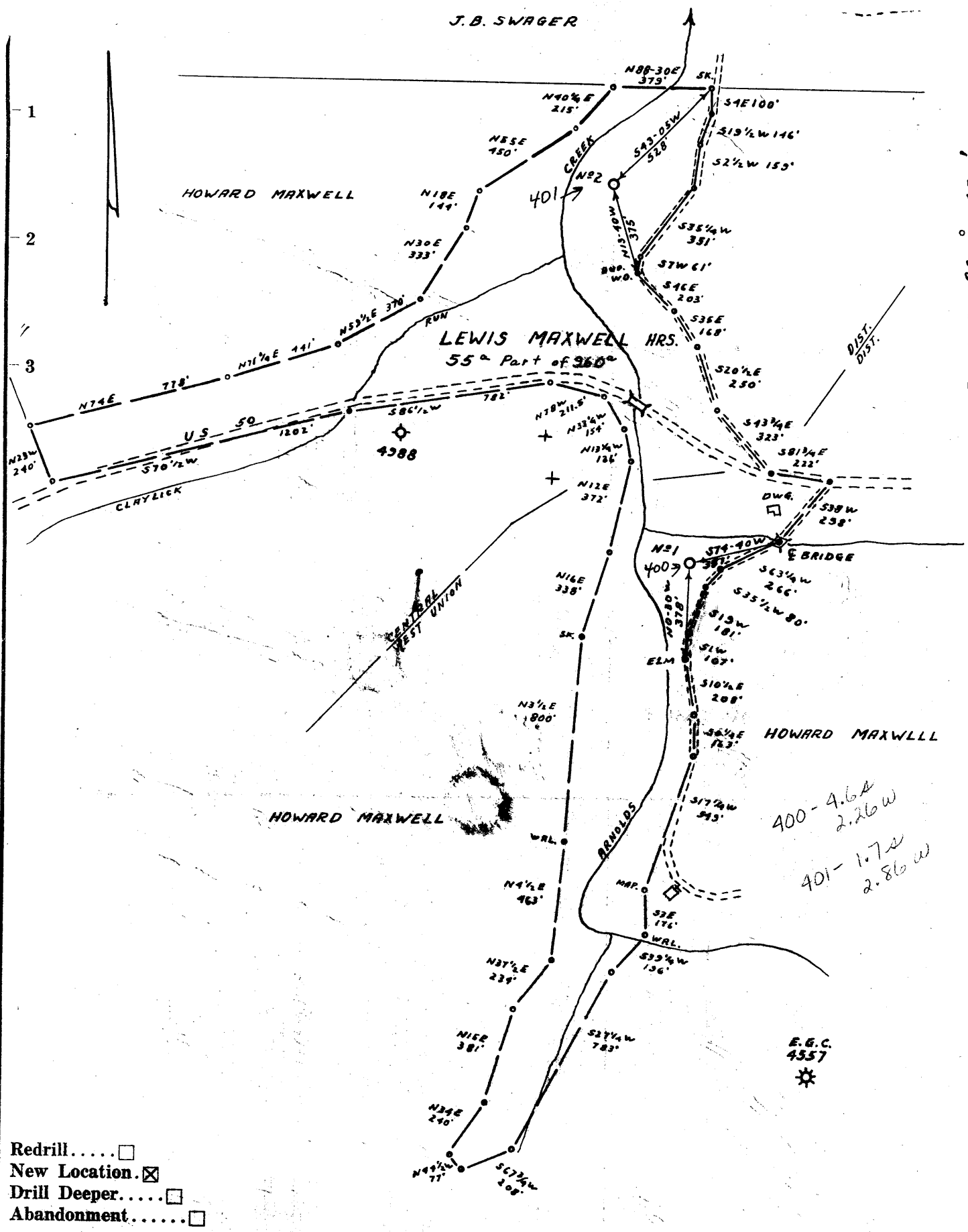


Latitude 39° 28'

Longitude 80° 45'



- Redrill.....
- New Location.
- Drill Deeper.....
- Abandonment.....

Company	OLIN B. WETZEL
Address	WEST UNION W.VA.
Farm	LEWIS MAXWELL HRS.
Tract	Acres 55 Lease No.
Well (Farm) No.	1-2 Serial No.
Elevation (Spirit Level)	N#1-812' N#2-807'
Quadrangle	WEST UNION SE
County	DODDRIDGE District WEST UNION ← 400 CENTRAL ← 401
Engineer	J. D. JEFFRIES
Engineer's Registration No.	1084
File No.	138/158 Drawing No.
Date	5-13-60 Scale 1" = 500'

STATE OF WEST VIRGINIA
DEPARTMENT OF MINES
OIL AND GAS DIVISION
CHARLESTON

WELL LOCATION MAP
FILE NO. DOD-400 #1
DOD-401 #2

+ Denotes location of well on United States Topographic Maps, scale 1 to 62,500, latitude and longitude lines being represented by border lines as shown.
— Denotes one inch spaces on border line of original tracing.

RDM^e



STATE OF WEST VIRGINIA
DEPARTMENT OF MINES
OIL AND GAS DIVISION/

Quadrangle WEST UNION
Permit No. DOD-401

WELL RECORD

Oil or Gas Well GAS
(KIND)

Company OLIN B. VETZEL
Address WEST UNION, W. VA.
Farm LEWIS MAXWELL Acres 55
Location (waters) ARNOLDS CREEK
Well No. 2 Elev. 807
District WEST UNION County DODDRIDGE
The surface of tract is owned in fee by HOWARD MAXWELL
Address WEST UNION, W. VA.
Mineral rights are owned by LEWIS MAXWELL
Address _____
Drilling commenced OCTOBER 21 1960
Drilling completed JANUARY 25, 1961
Date Shot _____ From _____ To _____
With _____
Open Flow _____ /10ths Water in _____ Inch
_____ /10ths Merc. in _____ Inch
Volume 284,000 Cu. Ft.
Rock Pressure 670 lbs. 24 hrs.
Oil _____ bbls., 1st 24 hrs.
WELL ACIDIZED _____

Casing and Tubing	Used in Drilling	Left in Well	Packers
Size			Kind of Packer
16.			
13.			
10.	51'	51'	Size of
	447	-0-	
6 3/4	977		Depth set
5 3/16	1712	1712	
3.			Perf. top
2.			Perf. bottom
Liners Used			Perf. top
			Perf. bottom

CASING CEMENTED 5 1/2 SIZE No. Ft. 12-8-60 Date
12 sk cement 6 sks. aquagel
Garaton Service, Inc.

COAL WAS ENCOUNTERED AT _____ FEET _____ INCHES
_____ FEET _____ INCHES FEET _____ INCHES
_____ FEET _____ INCHES FEET _____ INCHES

WELL FRACTURED _____

RESULT AFTER TREATMENT _____

ROCK PRESSURE AFTER TREATMENT _____

Fresh Water 20 @ 40 @ 370 Feet Salt Water _____ Feet

Formation	Color	Hard or Soft	Top	Bottom	Oil, Gas or Water	Depth	Remarks
CLAY			0	20			
BLUE CLAY			20	25	WATER	20	
SAND			25	35			
RED ROCK			35	45	ATER	40	
CLAY	BLUE		45	50			
SAND			50	60			
RED ROCK			60	70			
SLATE			70	85			
RED ROCK			85	90			
SLATE			90	105			
RED ROCK			105	114			
LIME			114	119			
SLATE			119	125			
LIME			125	130			
RED ROCK			130	135			
SLATE			135	155			
RED ROCK			155	170			
SLATE			170	175			
LIME			175	178			
SLATE			178	198			
LIME			198	203			
SLATE			203	218			
LIME			218	220			
SLATE	BLACK		220	232			
RED ROCK			232	230			
LIME			230	255			
SLATE			255	260			
LIME			260	275			
RED ROCK			275	285			
SLATE			285	290			
RED ROCK			290	300			



Formation	Color	Hard or Soft	Top /	Bottom	Oil, Gas or Water	Depth Found	Remarks
LIME			300	305			
SAND			305	348			
SLATE			348	370	WATER	370	
SAND			370	395			
LIME			395	413			
SLATE			413	417			
RED ROCK			417	422			
BLAKE			422	455			
SLATE	BLACK		455	468			
LIME			468	475			
SLATE			475	492			
LIME			492	500			
SLATE	SHELLS		500	579			
SLATE			579	587			
RED ROCK			587	602			
SLATE & SHALE			602	666			
RED ROCK			666	700			
LIME			700	712			
SLATE			712	725			
RED ROCK			725	750			
SLATE			750	775			
RED ROCK			775	800			
RED ROCK			800	850			
SLATE & LIME			850	870			
SAND			870	890			
RED SLATE & LIME			890	977			
SAND			977	987			
SLATE			987	1000			
LIME & SLATE			1000	1025			
SAND			1025	1044			
SLATE			1044	1100			
SAND			1100	1138			
SLATE			1138	1200			
SAND			1200	1290			
SLATE & SHELLS			1290	1530			
SAND	WHITE		1530	1550			
SLATE			1550	1560			
SAND	WHITE		1560	1595			
SLATE			1595	1650			
LIME			1650	1657			
LIME SHELLS			1657	1687			
SHALE			1687	1700			
LIME	DARK		1700	1755			
LIME		BROKEN	1755	1800			
LIME	HARD		1800	1830	GAS	1830	
SAND			1830	1855			
LIME			1855	1857			
SAND			1857	1882	GAS	1870	

Date MARCH 7, 19 61
OLIN B. WETZEL

APPROVED _____, Owner
 By Olin B. Wetzels, Agent
 (Title)