

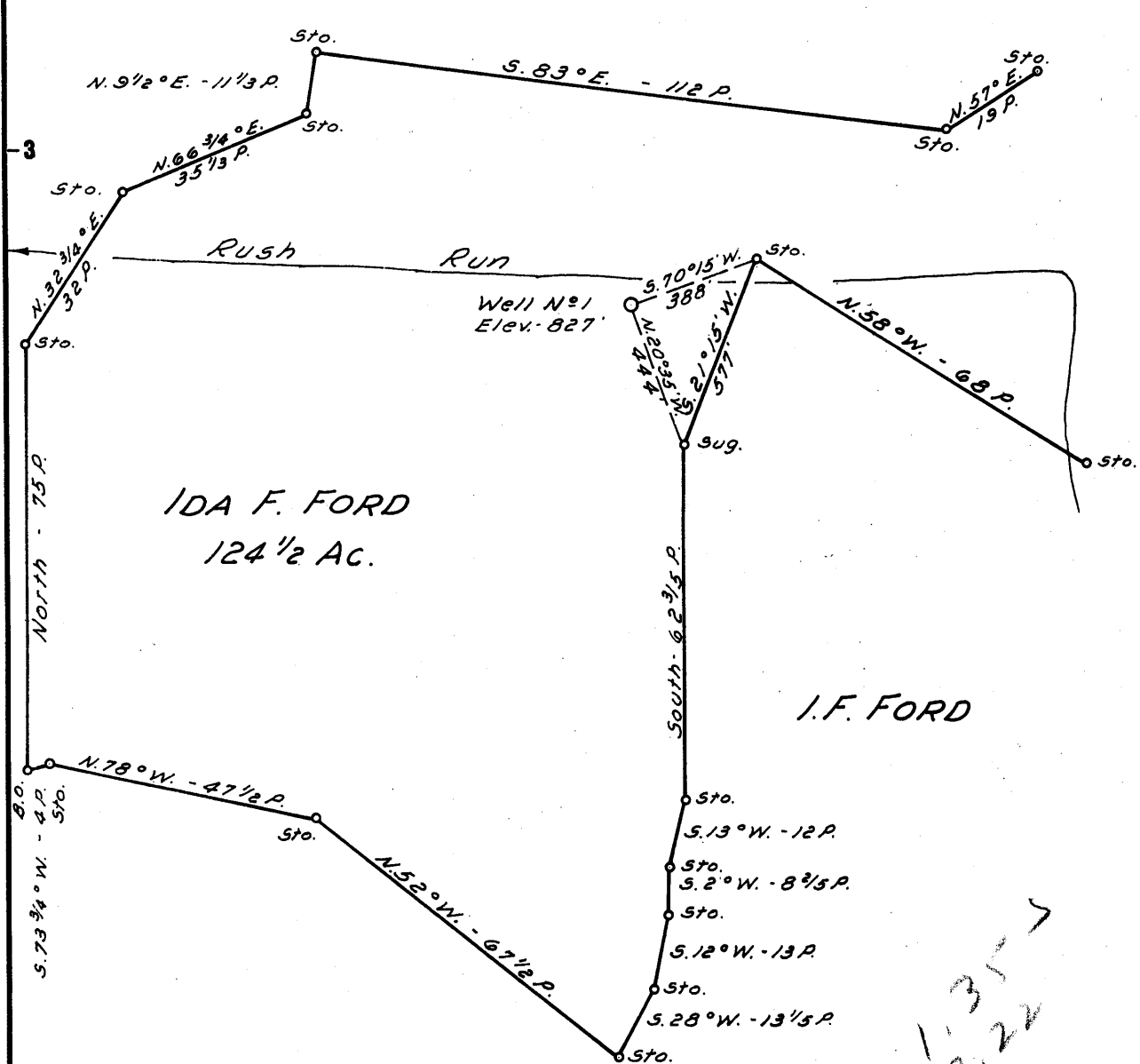
Latitude 39° 20'

Longitude 80° 45'

S. FORD

IDA F. FORD  
124 1/2 Ac.

I. F. FORD



New Location..  NOTE:  
 Drill Deeper.....   
 Abandonment.....  Ida F. Ford owns in Fee.

Company FORD DEVELOPMENT CO.  
 Address 90 HAROLD FORD WEST UNION, W. VA.  
 Farm IDA F. FORD  
 Tract \_\_\_\_\_ Acres 124 1/2 Lease No. \_\_\_\_\_  
 Well (Farm) No. 1 Serial No. \_\_\_\_\_  
 Elevation (Spirit Level) 827'  
 Quadrangle WEST UNION SE  
 County DODDRIDGE District WEST UNION  
 Engineer JOHN W. HAMILTON  
 Engineer's Registration No. 2274  
 File No. \_\_\_\_\_ Drawing No. \_\_\_\_\_  
 Date AUG. 28, 1960 Scale 1" = 30 POLES

STATE OF WEST VIRGINIA  
 DEPARTMENT OF MINES  
 OIL AND GAS DIVISION  
 CHARLESTON

**WELL LOCATION MAP**  
 FILE NO. DOD-459

+ Denotes location of well on United States Topographic Maps, scale 1 to 62,500, latitude and longitude lines being represented by border lines as shown.  
 - Denotes one inch spaces on border line of original tracing.

On Top of 446

Handwritten signature and checkmark



STATE OF WEST VIRGINIA  
DEPARTMENT OF MINES  
OIL AND GAS DIVISION

Quadrangle West Union

Permit No. DOD-459

**WELL RECORD**

Oil or Gas Well gas  
(KIND)

Company Ford Development Company  
Address 213 Chevront Av. West Union W.  
Farm Ida F. Ford Acres 328  
Location (waters) Middle Island Creek  
Well No. 2 Elev. 827  
District West Union County Doddridge  
The surface of tract is owned in fee by Ida F. Ford  
Address West Union, W. Va.  
Mineral rights are owned by I. Ford & A. Johnston  
West Union & Bridgeport, W. Va.

Drilling commenced Sept. 5, 1960  
Drilling completed October 22, 1960  
Date Shot From To  
With \_\_\_\_\_

Open Flow /10ths Water in \_\_\_\_\_ Inch  
/10ths Merc. in \_\_\_\_\_ Inch  
Volume Per 24 hrs. 350,000 Cu. Ft.  
Rock Pressure 139 lbs. 48 hrs.  
Oil \_\_\_\_\_ bbls., 1st 24 hrs.

WELL ACIDIZED \_\_\_\_\_  
WELL FRACTURED \_\_\_\_\_

Casing and Tubing	Used in Drilling	Left in Well	Packers
Size			None
16			Kind of Packer
13			
10	<u>65ft</u>	<u>0</u>	Size of
8 1/4	<u>355</u>	<u>0</u>	
6 3/4	<u>955</u>	<u>0</u>	Depth set
5 3/16	<u>1800</u>	<u>1800</u>	
3			Perf. top
2			Perf. bottom
Liners Used			Perf. top
			Perf. bottom

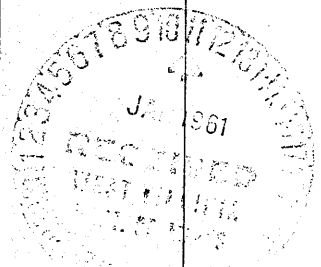
CASING CEMENTED 5" SIZE 1800 No. Ft. 10/14/60 Date  
10 sks. Cement - 6 sks. Aquagel - Garaton Service  
COAL WAS ENCOUNTERED AT 585 FEET slight amount INCHES  
FEET INCHES FEET INCHES  
FEET INCHES FEET INCHES

RESULT AFTER TREATMENT \_\_\_\_\_

ROCK PRESSURE AFTER TREATMENT \_\_\_\_\_

Fresh Water Yes Feet 250 Salt Water None Feet \_\_\_\_\_

Formation	Color	Hard or Soft	Top	Bottom	Oil, Gas or Water	Depth	Remarks
Clay			0	10	Water	12	
Sand Gritty			10	70			
Slate Shells			70	90			
Lime	Blue		90	105			
Red Rock	Red		105	116			
Slate Shells			116	240			
Lime		Hard	240	275			
Slate Shells			275	345			
Sand			345	408			
Slate Shells			408	420			
Sand			420	430			
Slate			430	480			
Lime			480	505			
Slate			505	570			
Lime	Blue		570	585			
Slate	Black		585	590			
Lime	Dark	Hard	590	600			
Slate Shells			600	680			
Red Eye	Red/White		680	703			
Lime	Blue		703	715			
Slate Shells			715	740			
Sand			740	800			
Slate	White		800	818			
Red			818	824			



Formation	Color	Hard or Soft	Top 5	Bottom	Oil, Gas or Water	Depth Found	Remarks
Lime	Blue		824	833			
Red Rock	Red		823	837			
Lime	Blue		837	859			
Slate Shells			859	882			
Red Rock	Pink		882	900			Mud up kind
Slate W	White		900	911			
Lime	Gray	Hard	911	930			
Sand			930	960			Little D.
Slate Shells			960	980			
Lime	Blue		980	994			
Sand			994	1025			Big Dunkard
Lime		Hard	1025	1125			
Sand		Hard & Soft	1125	1183			
Slate			1183	1190			
Lime			1190	1223			
Slate	Black		1223	1224			
Sand Gray	Gray	Very Hard	1224	1269			
Slate Shells			1269	1280			
Sand			1280	1395			
Lime	Dark		1395	1413			
Sand			1413	1438			
Slate Shells			1438	1455			
Sand			1455	1507			
Lime			1507	1511			
Slate Shells			1511	1548			
Lime			1548	1558			
Sand			1558	1605			
Slate			1605	1625			
Lime Hard			1625	1645			
Sand MX			1645	1675			
Lime			1675	1711			
Slate			1711	1725			
Lime	Black		1711	1745			
Slate			1725	1747			
Blue Monday		Very Hard	1747	1753			
Slate			1753	1758			
Big Lime			1758	1844			
Sand Keener			1844	1846			
Lime			1846	1855			
Sand	Gray		1855	1901	show gas	1870	Injun Sand
Slate	dard		1901	1908		Break in Sand	
Sand	White		1908	1930	gas	1920	

Date Jan 6, 1961

APPROVED Good Development Company Owner

By John C. Ford, Jr.  
(Title)