

FAITH LEASE 200 OF 1,100 ACRES± TOTAL

MAXWELL NO. 1-A 47-017-0461-D

SUE ANN SPIKER
872.83 AC.±
(SURFACE)

SUE ANN SPIKER
872.83 AC.±
(SURFACE)

RECEIVED
Office of Oil & Gas
Office of Chief
APR 29 1999
WV Division of
Environmental Protection

200 ACRE
MINERAL TRACT

400 ACRE
MINERAL TRACT

GEORGE ADRIAN et al
290.67 AC.±
(SURFACE)

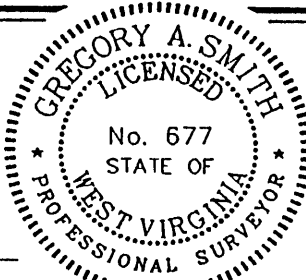
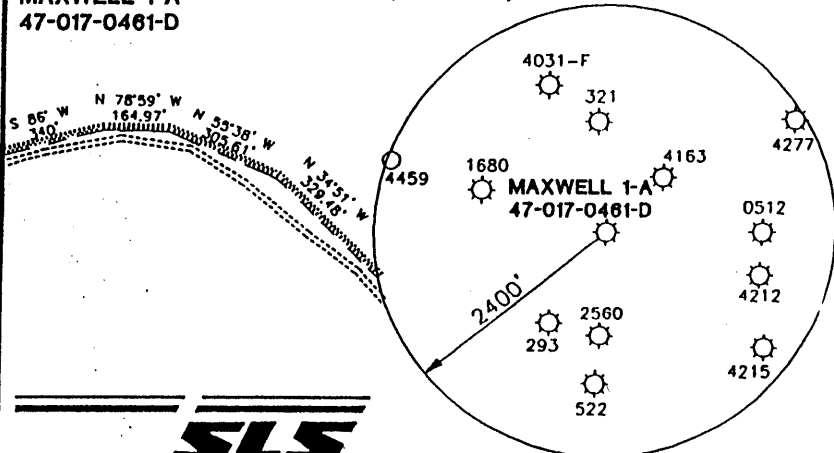
GEORGE ADRIAN et al
290.67 AC.±
(SURFACE)

MAXWELL 1-A
47-017-0461-D

NOTES ON SURVEY

1. TIES TO WELLS AND CORNERS ARE BASED ON STATE PLANE GRID NORTH WV NORTH ZONE NAD '27.
2. LEASE BOUNDARY SHOWN HEREON TAKEN FROM A PLAT DATED 2/27/96 AS PREPARED BY NEAL HUGHES FOR A.P.I. NO. 47-017-4273.
3. SURFACE OWNER AND ADJOINER INFORMATION TAKEN FROM THE ASSESSOR AND COUNTY CLERK RECORDS OF DODDRIDGE COUNTY IN FEBRUARY, 1999.
4. WELL LAT./LONG. ESTABLISHED BY DGPS(SUBMETER MAPPING GRADE).

.55
2.03



I THE UNDERSIGNED, HEREBY CERTIFY THAT THIS PLAT IS CORRECT TO THE BEST OF MY KNOWLEDGE AND BELIEF AND SHOWS ALL THE INFORMATION REQUIRED BY LAW AND THE REGULATIONS ISSUED AND PRESCRIBED BY THE DEPARTMENT OF ENERGY.

P.S. 677 Gregory A. Smith

(+) DENOTES LOCATION OF WELL ON UNITED STATES TOPOGRAPHIC MAPS.

DATE APRIL 12, 19 99
 OPERATORS WELL NO. MAXWELL # 1-A
 API WELL NO. 47-017-00461-7
 STATE COUNTY PERMIT

MINIMUM DEGREE OF ACCURACY 1 / 200 FILE NO. 4158P1A (73-10)
 PROVEN SOURCE OF ELEVATION TOP OF KNOB ELEVATION 1358' SCALE 1" = 500'

STATE OF WEST VIRGINIA
DIVISION OF ENVIRONMENTAL PROTECTION
OFFICE OF OIL AND GAS



WELL TYPE : OIL GAS LIQUID INJECTION WASTE DISPOSAL IF "GAS" PRODUCTION STORAGE DEEP SHALLOW

LOCATION : ELEVATION 1306' WATERSHED RIGHT HAND FORK OF LICK RUN
 DISTRICT NEW MILTON COUNTY DODDRIDGE QUADRANGLE NEW MILTON 7.5'

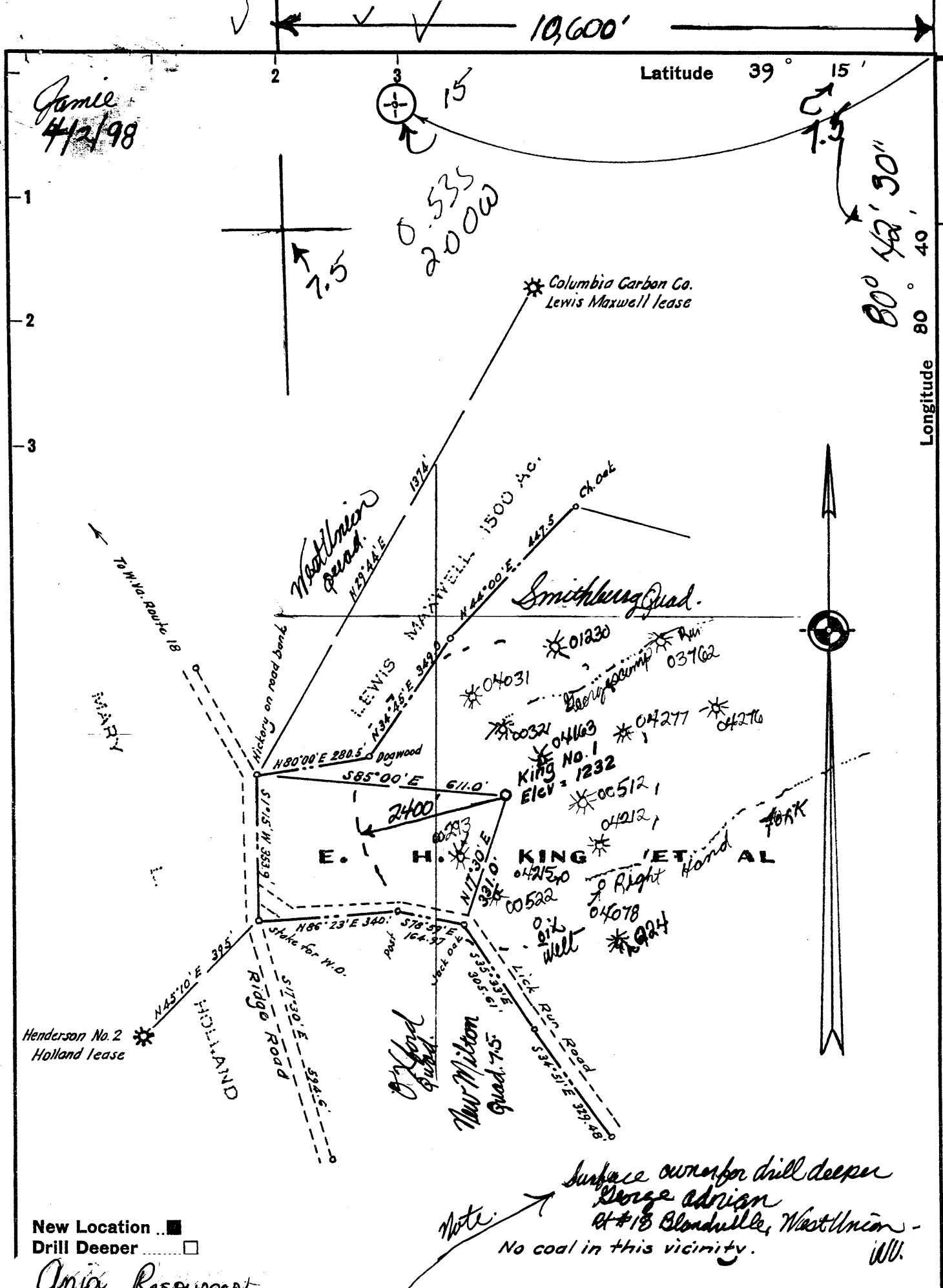
SURFACE OWNER GEORGE ADRIAN et al ACREAGE 290.67
 ROYALTY OWNER LEWIS MAXWELL HEIRS LEASE ACREAGE 200 OF 1100

PROPOSED WORK : LEASE NO. _____
 DRILL CONVERT DRILL DEEPER REDRILL FRACTURE OR STIMULATE PLUG OFF OLD FORMATION PERFORATE NEW FORMATION PLUG AND ABANDON CLEAN OUT AND REPLUG OTHER _____
 PHYSICAL CHANGE IN WELL (SPECIFY) _____ TARGET FORMATION GORDON
 ESTIMATED DEPTH 3000'

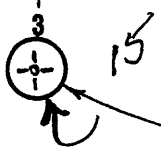
WELL OPERATOR ANJA d.b.o. / FAITH OIL AND GAS DESIGNATED AGENT JOHN ROMINGER
 ADDRESS RT. 3 BOX 238C PHILLIPPI, WV 26416 ADDRESS RT. 2 BOX 20 SALEM, WV 26426

COUNTY NAME DODD
PERMIT 0461-D

MAY 17 1999



Jamie
4/2/98



0.535
2000

1.5
80° 42' 30"

Longitude 80° 40'

Columbia Carbon Co.
Lewis Maxwell lease

West Union
quad.

Smithburg Quad.

KING ET AL

Note:

Surface owner for drill deeper
George Adrian
At #18 Blondville, West Union -
No coal in this vicinity. W.V.

New Location
Drill Deeper

Anja Resources
Rt. 2, Box 20
Salem West Virginia 26426

Farm E. H. King, et al
 Tract _____ Acres 200 Lease No. _____
 Well (Farm) No. One Serial No. _____
 Elevation (Spirit Level) 1232
 Quadrangle Yadis 15 / New Milton 7.5
 County Doddrige District New Milton
 Engineer [Signature]
 Engineer's Registration No. 1227
 File No. _____ Drawing No. _____
 Date Sept. 1960 Scale 1" = 300'

WEST VIRGINIA
DIVISION OF ENVIRONMENTAL PROTECTION
OFFICE OF OIL AND GAS
#10 McJUNKIN ROAD
NITRO, WEST VIRGINIA 25143-2506

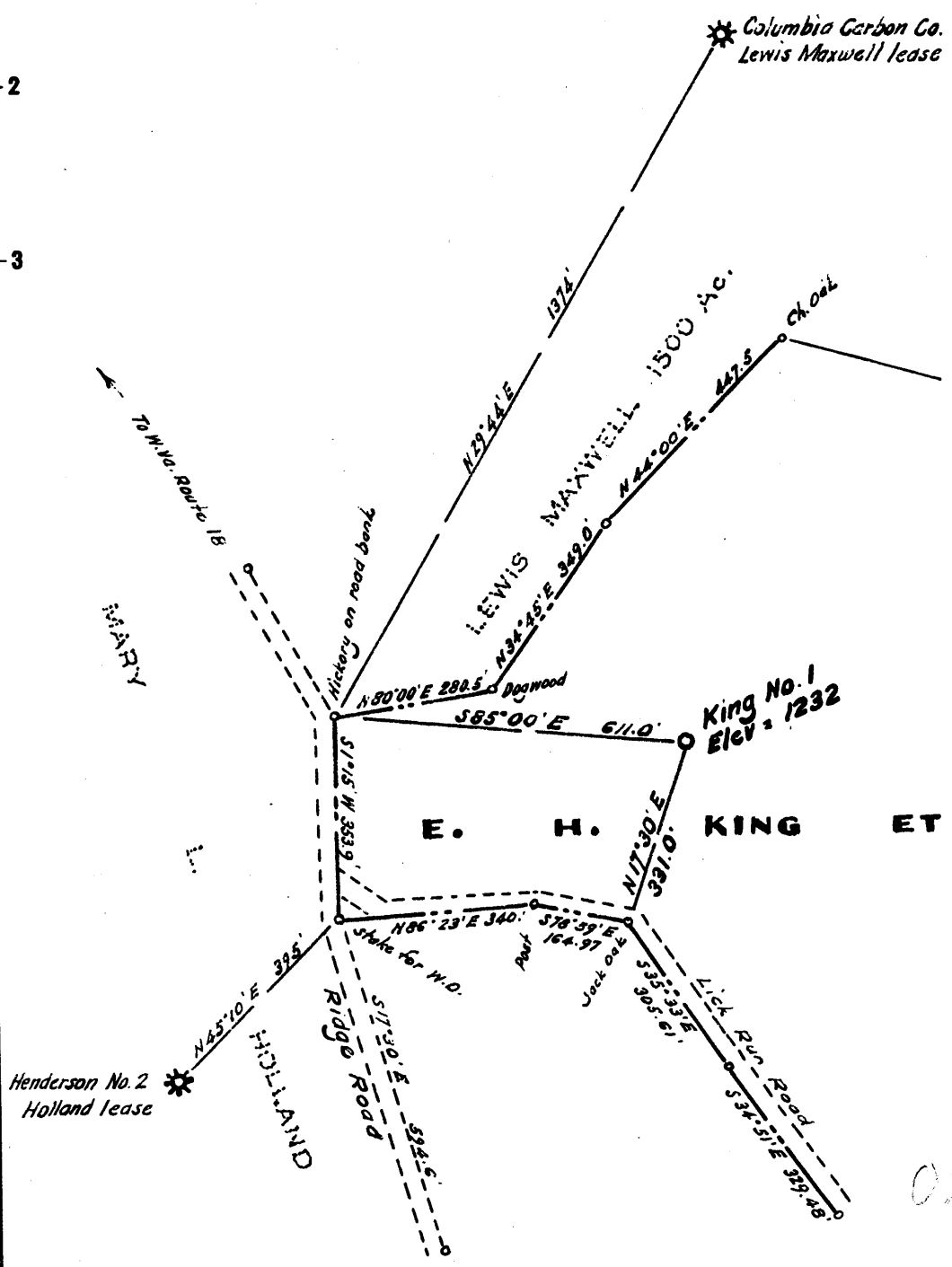
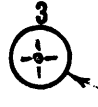
WELL LOCATION MAP

Oil Well No. 47-017-00461-D
 Well was drilled in 1958 by
 J. E. [unclear] and [unclear]
 Drilled well deeper to @ 2305' and
 and produce Gas only 1958

D000 0461-D

Latitude 39° 15'

Longitude 80° 40'



New Location
 Drill Deeper
 Abandonment

No coal in this vicinity.

Company **T. E. ALLEN**
 Address **Box 176, West Union, W. Va.**
 Farm **E. H. King, et al**
 Tract _____ Acres **200** Lease No. _____
 Well (Farm) No. **One** Serial No. _____
 Elevation (Spirit Level) **1232**
 Quadrangle **Yadis NW**
 County **Doddrige** District **New Milton**
 Engineer *[Signature]*
 Engineer's Registration No. **1227**
 File No. _____ Drawing No. _____
 Date **Sept. 1960** Scale **1" = 300'**

STATE OF WEST VIRGINIA
 DEPARTMENT OF MINES
 OIL AND GAS DIVISION
 CHARLESTON

WELL LOCATION MAP
 FILE NO. **DOD - 461**

+ Denotes location of well on United States Topographic Maps, scale 1 to 62,500, latitude and longitude lines being represented by border lines as shown.

- Denotes one inch spaces on border line of original tracing.

On Top of 321

WR-35

API# -47-017-00461 F

K

State of West Virginia
Division of Environmental Protection
Section of Oil and Gas

RECEIVED
Office of Oil & Gas
Permitting
FEB 09 2000
WV Division of
Environmental Protection

Well Operator's Report of Well Work

Farm Name: Adrian, George
Location: Elevation: 1,306'
District: New Milton
Latitude: 2900 Feet South of
Longitude: 10720 Feet West of
Operators Well No.: Maxwell 1A
Quadrangle: New Milton
County: Doddridge
39 Deg. 15 min. 00sec.
80 Deg. 42 min. 30sec.

Company: Anja Resources
Rt.2 Box 10
Salem, WV 26426

casing used in left cement
tubing drilling in well fill up sks

Agent: John Rominger

Inspector: Mike Underwood
Permit Issued: 05/13/99 6 5/8 2100 2100 N/A
Well Work Commenced: 08/05/99
Well Work Completed: 08/16/99 4 1/2 2736 2736 175
Rotary X Cable _____ Rig
Total Depth (feet) 2740'
Fresh Water Depths (ft) N/A
Salt Water Depths (ft) N/A
Is coal being mined in area (Y/N) N
Coal Depths (ft): N/A

OPEN FLOW DATA

Producing formation Gordon Pay zone depth (ft) 2660-2686
Gas: Initial open flow tstsm MCF/D Oil: Initial open flow 0 BBL/D
Final open flow 607 MCF/D Final open Flow show BBL/D
Static Rock Pressure 225 psig (surface pressure) after 48 Hours

Second producing formation Berea Pay zone depth (ft) 2450-2458
Gas: Initial open flow * MCF/D Oil: Initial open flow 0 BBL/D
Final open flow * MCF/D Final open flow 0 BBL/D
static rock pressure * psig (surface pressure) after * Hours

* = commingled zones

For: Anja Resources

By: John E Rominger

Date: 10-31-99

FEB 25 2000

D000 0461 F

Stage	Formation	Perfs	Sand	N2
08-16-99	Maxwell 1A			
1	Gordon Berea	2696-2684 2453-2454 16 holes	350 sks	310,000 scf

ISIP = 2350#

Drillers Log

Formation Top Bottom

See Original OG-10 for drillers log
for formations and tops

Rework existing zones

Electric Log Tops

Formation Depth top

WR-35-~~2000~~
 Office of Oil and Gas
AUG 11 1998
 WV Division of
 Environmental Protection

06-Apr-98
 API # 47- 17-00461 d

State of West Virginia
 Division of Environmental Protection
 Section of Oil and Gas

Well Operator's Report of Well Work

Farm name: George Adrain Operator Well No.: Maxwell 1-A

LOCATION: Elevation: 1,232.00 Quadrangle: VADIS

District: NEW MILTON County: DODDRIDGE
 Latitude: 2620 Feet South of 39 Deg. 15Min. 0 Sec.
 Longitude 10600 Feet West of 80 Deg. 42 Min. 30 Sec.

Company: ANJA RESOURCES
 ROUTE 2 BOX 20
 SALEM, WV 26426-0020

Agent: JOHN E. ROMINGER

Inspector: MIKE UNDERWOOD
 Permit Issued: 04/02/98
 Well work Commenced: 4/26/98
 Well work Completed: 4/29/98
 Verbal Plugging _____
 Permission granted on: _____
 Rotary Cable _____ Rig _____
 Total Depth (feet) 2800
 Fresh water depths (ft) -0-
Drill Deeper
 Salt water depths (ft) _____
None
 Is coal being mined in area (Y/N)? _____
 Coal Depths (ft): N

Casing & Tubing Size	Used in Drilling	Left in Well	Cement Fill Up Cu. Ft.
7"	2110	2190	25 SKS

OPEN FLOW DATA

Producing formation Gordon Stray Pay zone depth (ft) 2680
 Gas: Initial open flow 200 MCF/d Oil: Initial open flow _____ Bbl/d
 Final open flow 200 MCF/d Final open flow _____ Bbl/d
 Time of open flow between initial and final tests _____ Hours
 Static rock Pressure 160 psig (surface pressure) after 24 Hours

Second producing formation Gordon Pay zone depth (ft) 2685
 Gas: Initial open flow 400 MCF/d Oil: Initial open flow _____ Bbl/d
 Final open flow 400 MCF/d Final open flow _____ Bbl/d
 Time of open flow between initial and final tests 12 Hours
 Static rock Pressure 160 psig (surface pressure) after 24 Hours

NOTE: ON BACK OF THIS FORM PUT THE FOLLOWING: 1). DETAILS OF PERFORATED INTERVALS, FRACTURING OR STIMULATING, PHYSICAL CHANGE, ETC. 2). THE WELL LOG WHICH IS A SYSTEMATIC DETAILED GEOLOGICAL RECORD OF ALL FORMATIONS, INCLUDING COAL ENCOUNTERED BY THE WELLBORE.

For: ANJA RESOURCES

X By: John E Rominger Agent
 Date: 15 JUL 98

* Drilled To. 2800 - Producing
open hole - No Frac or Treatment



STATE OF WEST VIRGINIA
DEPARTMENT OF MINES
OIL AND GAS DIVISION 3

Quadrangle VADIS

Permit No. DOD-461

WELL RECORD

Oil or Gas Well Gas
(KIND)

Company T. E. Allen
Address P. O. Box 176, West Union, W. Va.
Farm E. H. King Acres 200
Location (waters) Lick Run
Well No. 1 Elev. 1232'
District New Milton County Doddridge
The surface of tract is owned in fee by Maxwell Heirs
Address West Union, W. Va.
Mineral rights are owned by Lewis Maxwell Heirs
Address West Union, W. Va.

Drilling commenced September 8, 1960
Drilling completed November 11, 1960
Date Shot X From _____ To _____
With X

Open Flow 68.61 /10ths Water in _____ Inch
/10ths Merc. in Two Inch
Volume _____ Cu. Ft.
Rock Pressure 300 lbs. 12 hrs.
Oil None bbls., 1st 24 hrs.

WELL ACIDIZED -----
WELL FRACTURED Yes

RESULT AFTER TREATMENT 1,795,000
ROCK PRESSURE AFTER TREATMENT 520 24 Hours
Fresh Water _____ Feet Salt Water _____ Feet

Casing and Tubing	Used in Drilling	Left in Well	Packers
Size			Kind of Packer
16			
13			
10			Size of
8 1/4			
6 3/4	2110	2110	Depth set
5 3/16			
3			Perf. top
2			Perf. bottom
Liners Used			Perf. top
			Perf. bottom

CASING CEMENTED Yes SIZE 6 5/8 No. Ft. 11-19-60
25 sks. Cement - 8 sks. Aquagel - 2112 Ft. Garaton Service

COAL WAS ENCOUNTERED AT _____ FEET _____ INCHES
_____ FEET _____ INCHES _____ FEET _____ INCHES
_____ FEET _____ INCHES _____ FEET _____ INCHES

Formation	Color	Hard or Soft	Top	Bottom	Oil, Gas or Water	Depth	Remarks
Surface	Clay, Blds	Hard	0000	11			
Rock	Gray	Hard	11	45			
Mud, Shale	Gray	Soft	45	94	Water	80	Later Disappeared
Shale	Gray	Soft	94	107			
Red Rock	Red	Hard	107	135			
Lime	Gray	Hard	135	140			
Rock	Red	Hard	140	164			
Lime	Gray	Soft	164	188			
Rock	Red	Hard	188	208	Water	190	Fresh
Rock	Red	Hard	208	245			
Lime	Gray	Soft	245	250			
Sand	Gray	Soft	250	285			
Rock	Red	Hard	285	290			
Slate	Gray	Soft	290	293			
Lime	Gray	Soft	293	310			
Shale	Red	Soft	310	316			
Lime	Gray	Soft	316	352			
Rock	Red	Hard	352	355			
Lime	Pink	Soft	355	363			
Rock	Red	Hard	363	392			
Lime	Gray	Soft	392	406			
Hurry Up	Sand	Soft	406	450			
Lime	Gray	Soft	450	495			
Rock	Red	Hard	495	498			
Lime	Pink	Hard	498	515			
Rock	Red	Hard	515	520			
Lime	Gray	Soft	520	538			
Slate	Gray	Soft	538	541			
Rock	Red	Hard	541	550			
Slate	Pink	Hard	550	570			

Formation	Color	Hard or Soft	Top 3	Bottom	Oil, Gas or Water	Depth Found	Remarks
Lime	Gray	Soft	570	588			
Slate	Gray	Hard	588	601			
Lime	Gray	Hard	601	618			
Slate	Gray	Hard	618	648			
Lime	Gray	Hard	648	683			
Slate	Shell Gray	Hard	683	718			
Rock	Red	Hard	718	740			
Slate	Gray	Hard	740	751			
Rock	Red	Hard	751	798			
Slate	Pink	Hard	798	801			
Lime	Gray	Soft	801	847			
Rock	Red	Hard	847	856			
Lime	Pink	Soft	856	890			
Slate	Gray	Hard	890	902			
Lime	Gray	Soft	902	905			
Slate	Gray	Soft	905	936			
Rock	Red	Hard	936	950			
Lime	Gray	Soft	950	975			
Sand	Maxen	Soft	975	985	Gas	980	
Lime	Gray	Soft	985	995			
Slate	Gray	Soft	995	1004			
Rock	Red	Hard	1004	1020			
Slate	Shells	Hard	1020	1060			
Lime	Gray	Soft	1060	1075			
Slate	Black	Hard	1075	1098			
Lime	Shells	Hard	1098	1140			
Slate	Gray	Hard	1140	1192			
Lime	Gritty	Hard	1192	1225			
Sand Big	Dunkard	Soft	1225	1264			
Lime	Gray	Soft	1264	1270			
Sand	Gray	Soft	1270	1310			
Lime	Gray	Soft	1310	1325			
Sand	Gray	Soft	1325	1340			
Lime	Gray	Soft	1340	1352			
Slate	Gray	Hard	1352	1392			
Sand	Gray	Hard	1392	1485			
Slate	Gray	Hard	1485	1500			
Sand	Shells	Hard	1500	1523			
Slate	Shells	Hard	1523	1665			
Lime	Gray	Soft	1665	1714			
Slate	Black	Hard	1714	1772			
Lime	Black	Hard	1772	1795			
Slate	Gray	Hard	1795	1825			
Lime	Gray	Hard	1825	1846			
Lime	Pink	Hard	1846	1860			
Lime	Pink	Hard	1860	1868			
Rock	Red	Hard	1868	1873			
Lime	Pink	Hard	1873	1907			
Slate	Gray	Hard	1907	1912			
Lime	Gray	Soft	1912	1916			
Pencil Cave		Hard	1916	1935			
Big Lime	Gray	Soft	1935	2008	Gas	1950	
Injun Sand		Soft	2008	2078			
Slate	Gray	Hard	2078	2112	Cemented	2112	

Date January 2, 1961

APPROVED _____, Owner

By _____ Promoter

(Title)