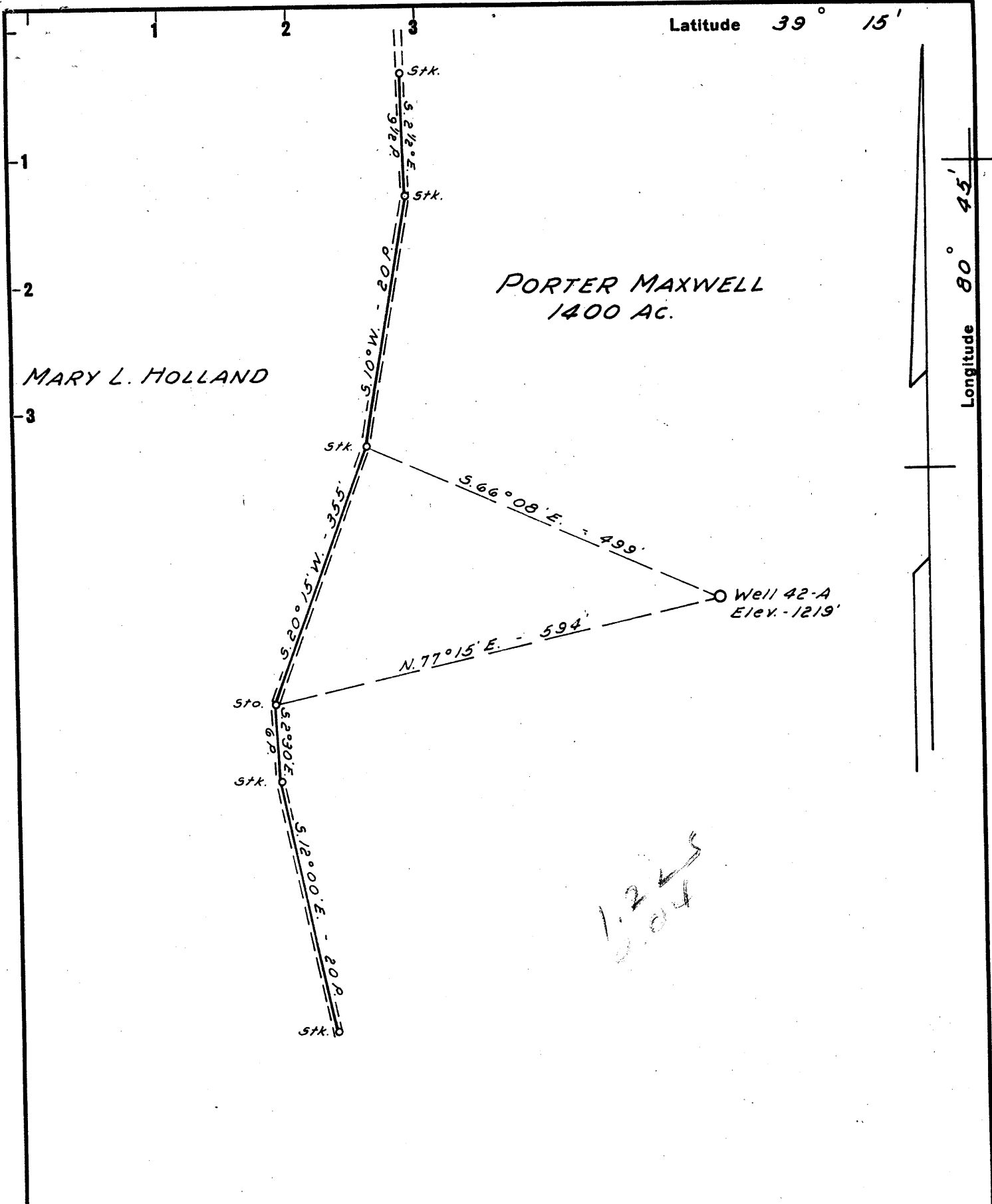


M

Latitude 39° 15'

Longitude 80° 45'



1225  
5.04

New Location

Drill Deeper

Abandonment

NOTE: Porter Maxwell Hrs. own in Fee.

Company MURPHY OIL CO. OF PENNA.  
 Address 304 COURT ST. WEST UNION, W. VA.  
 Farm PORTER MAXWELL  
 Tract \_\_\_\_\_ Acres 1400 Lease No. \_\_\_\_\_  
 Well (Farm) No. 42-A Serial No. \_\_\_\_\_  
 Elevation (Spirit Level) 1219'  
 Quadrangle HOLBROOK NE  
 County DODDRIDGE District NEW MILTON  
 Engineer JOHN W. HAMILTON  
 Engineer's Registration No. 2274  
 File No. \_\_\_\_\_ Drawing No. \_\_\_\_\_  
 Date SEPT. 3, 1960 Scale 1" = 10 POLES

STATE OF WEST VIRGINIA  
DEPARTMENT OF MINES  
OIL AND GAS DIVISION  
CHARLESTON

WELL LOCATION MAP  
FILE NO. DOD-462

+ Denotes location of well on United States Topographic Maps, scale 1 to 62,500, latitude and longitude lines being represented by border lines as shown.  
- Denotes one inch spaces on border line of original tracing.

Too Crowded To Plot

5-6-60



STATE OF WEST VIRGINIA  
DEPARTMENT OF MINES  
OIL AND GAS DIVISION 6

Quadrangle Holbrook

Permit No. DOB-462

WELL RECORD

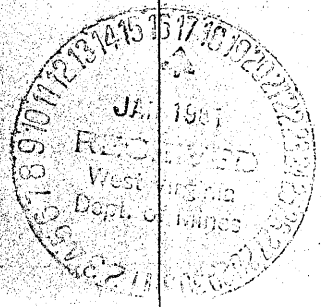
Oil or Gas Well Gas

Company Murphy Oil Company of Penna.  
Address West Union, West Virginia  
Farm Porter Maxwell Acres 14.00  
Location (waters) Luedtke  
Well No. 42A Elev. 1219'  
District New Milton County Doddridge  
The surface of tract is owned in fee by L. Holland Address West Union, W. Va.  
Mineral rights are owned by Raymond Maxwell, et al. Address Porter Maxwell, Holbrook, Clarksburg, W. Va.  
Drilling commenced Dec. 7, 1960  
Drilling completed January 6, 1961  
Date Shot \_\_\_\_\_ From \_\_\_\_\_ To \_\_\_\_\_  
With \_\_\_\_\_  
Open Flow \_\_\_\_\_ /10ths Water in \_\_\_\_\_ Inch  
\_\_\_\_\_ /10ths Merc. in \_\_\_\_\_ Inch  
Volume 286,000 Cu. Ft.  
Rock Pressure 650# lbs. 12 hrs hrs.  
Oil None bbls., 1st 24 hrs.  
WELL ACIDIZED No  
100 gal. acid w/frac-  
WELL FRACTURED Yes- January 7, 1961  
By-Dowell  
RESULT AFTER TREATMENT 7,500.000 ref  
ROCK PRESSURE AFTER TREATMENT 700# 12 Hours  
Fresh Water \_\_\_\_\_ Feet Salt Water \_\_\_\_\_ Feet

Casing and Tubing	Used in Drilling	Left in Well	Packers
Size			
16			Kind of Packer
13	8'	8'	
10	405'	0	Size of
8 1/4	1223'	0	
6 3/4 20#	1882'	1882'	Depth set
5 3/16			
3			Perf. top
2			Perf. bottom
Liners Used			Perf. top
			Perf. bottom

CASING CEMENTED 7" od SIZE 20# No. Ft. 210' Date 12/31/60  
20 sks. Cement - Garaton Service  
6 sks. Aquagel - No coal  
COAL WAS ENCOUNTERED AT \_\_\_\_\_ FEET \_\_\_\_\_ INCHES  
\_\_\_\_\_ FEET \_\_\_\_\_ INCHES \_\_\_\_\_ FEET \_\_\_\_\_ INCHES  
\_\_\_\_\_ FEET \_\_\_\_\_ INCHES \_\_\_\_\_ FEET \_\_\_\_\_ INCHES

Formation	Color	Hard or Soft	Top	Bottom	Oil, Gas or Water	Depth	Remarks
and			0	25			
late			25	40			
red rock	red		40	50			
late			50	60			
red rock			60	100			
late		shells	100	115			
red rock			115	130			
late		shells	130	140			
red rock			140	180			
late			180	245			
lime			245	270			
red rock			270	280			
late			280	300			
lime			300	310			
red rock			310	330			
and			330	380			
lime			380	390			
late & shells			390	425			
red rock			425	437			
late & shells			437	455			
red rock			455	470			
late & shells			470	490			
lime			490	510			
late & shells			510	610			
red rock			610	620			
late & shells			620	645			
red rock			645	720			
lime			720	735			



Formation	Color	Hard or Soft	Top 6	Bottom	Oil, Gas or Water	Depth Found	Remarks
Sand			735	745			
Slate & shells			745	765			
Red rock			765	785			
Slate & shells			785	835			
Gritty lime			835	845			
Red rock	pink		845	875			
Sand			875	895			
Slate			895	905			
Lime			905	915			
Slate			915	995			
Lime		Broken	995	1010			
Slate	Black		1010	1035			
Slate	White		1035	1110			
Lime			1110	1130			
Slate			1130	1175			
Sand		Broken	1175	1195			
Slate	Black		1195	1210			
Sand			1210	1245			
Slate	Black		1245	1265			
Lime			1265	1275			
Sand			1275	1295			
Slate	Black		1295	1340			
Sand			1340	1390			
Slate & Shells			1390	1425			
Lime			1425	1445			
Slate			1445	1555			
Lime			1555	1575			
Sand			1575	1655	show Gas	1580	
Slate & shells			1655	1730			
Sand			1730	1785			
Slate	Broken		1785	1790			
Lime			1790	1805			
Broak			1805	1807			
Lime			1807	1825			
Sand			1825	1850			
Big Lime			1850	1910	show		
Big Injun sand			1910	1985	Oil & Gas	1917	
Red rock			1985	1986	* Gas	1947-1982	
Slate			1986	2000			

Plugged back to 1983'