

4.835
4.19W

- New Location
- Drill Deeper
- Redrill
- Abandonment *closed 10-6-69*

Company F. C. Stone (West Branch Oil & Gas)
 Address 203 E. State St., Athens, Ohio
 Farm Bert Costo
 Tract _____ Acres 15.2 Lease No. _____
 Well (Farm) No. one Serial No. _____
 Elevation (Spirit Level) 937'
 Quadrangle West Union SE
 County Doddridge District Central
 Engineer W. S. Stone
 Engineer's Registration No. 1227
 File No. _____ Drawing No. _____
 Date Oct 29, 1960 Scale 1" = 200'

STATE OF WEST VIRGINIA
 DEPARTMENT OF MINES
 OIL AND GAS DIVISION
 CHARLESTON

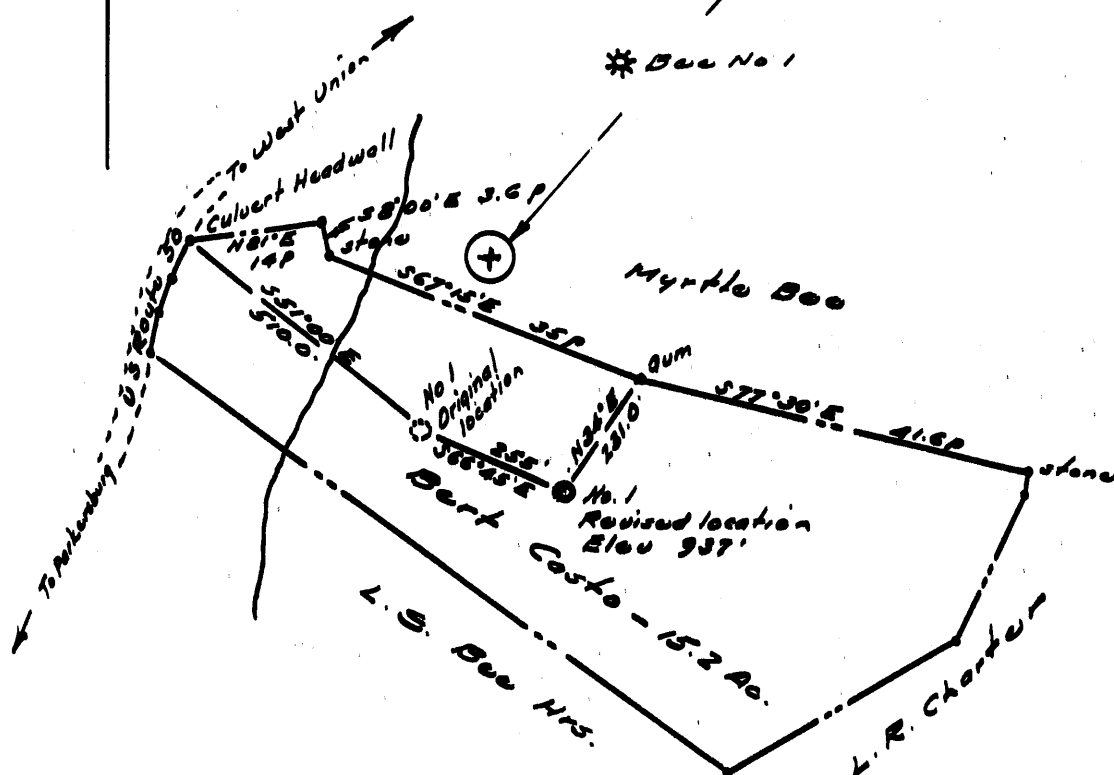
WELL LOCATION MAP
 FILE NO. 000-479 (Revised) - P

+ Denotes location of well on United States Topographic Maps, scale 1 to 62,500, latitude and longitude lines being represented by border lines as shown.

— Denotes one inch spaces on border line of original tracing.

Latitude 39° 20'

Longitude 80° 45'



- New Location.
- Drill Deeper.
- Redrill
- Abandonment

Company R. G. BACHELOR
 Address Box 116, West Union, W. Va.
 Farm Bert Costo
 Tract _____ Acres 15.2 Lease No. _____
 Well (Farm) No. One Serial No. _____
 Elevation (Spirit Level) 937'
 Quadrangle West Union SE
 County Doddridge District Central
 Engineer W. S. [Signature]
 Engineer's Registration No. 1227
 File No. _____ Drawing No. _____
 Date Oct 29, 1960 Scale 1" = 200'

STATE OF WEST VIRGINIA
 DEPARTMENT OF MINES
 OIL AND GAS DIVISION
 CHARLESTON

WELL LOCATION MAP
 FILE NO. 000-479 (Revised)

+ Denotes location of well on United States Topographic Maps, scale 1 to 62,500, latitude and longitude lines being represented by border lines as shown.

— Denotes one inch spaces on border line of original tracing.