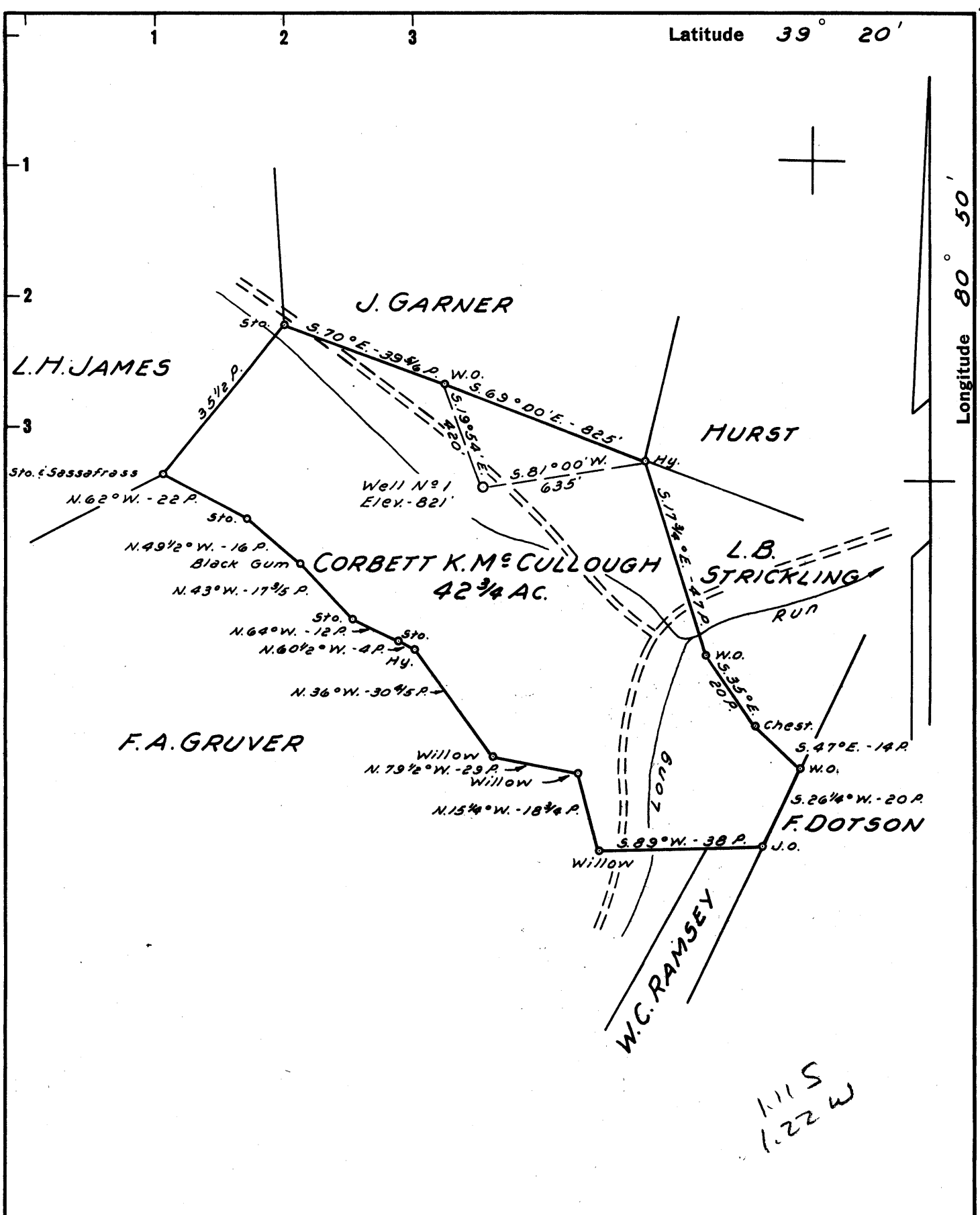


Latitude 39° 20'

Longitude 80° 50'



NOTE:
 New Location Surface Rights owned by Corbett K.M. Cullough.
 Drill Deeper Mineral Rights owned by Bessie H. Moore, 1617 Lynn St.,
 Abandonment Parkersburg, W. Va.

Company 410 O. E. PITTS, AGENT PLANTATION DRILLING CO.
 Address 4070 W. BROWARD BLVD. FORT LAUDERDALE, FLORIDA
 Farm CORBETT K.M. CULLOUGH
 Tract _____ Acres 42 3/4 Lease No. _____
 Well (Farm) No. 1 Serial No. _____
 Elevation (Spirit Level) 821'
 Quadrangle WEST UNION SC
 County DODDRIDGE District CENTRAL
 Engineer JOHN W. HAMILTON
 Engineer's Registration No. 2274
 File No. _____ Drawing No. _____
 Date OCT. 23, 1960 Scale 1" = 30 POLES

STATE OF WEST VIRGINIA
 DEPARTMENT OF MINES
 OIL AND GAS DIVISION
 CHARLESTON

WELL LOCATION MAP
 FILE NO. D00-487

+ Denotes location of well on United States Topographic Maps, scale 1 to 62,500, latitude and longitude lines being represented by border lines as shown.

- Denotes one inch spaces on border line of original tracing.