

4.46 S
0.27 W

- New Location.
- Drill Deeper.
- Redrill.
- Abandonment.

No coal
Surface: Vonda 1 Leggett
Parkersburg, W. Va.

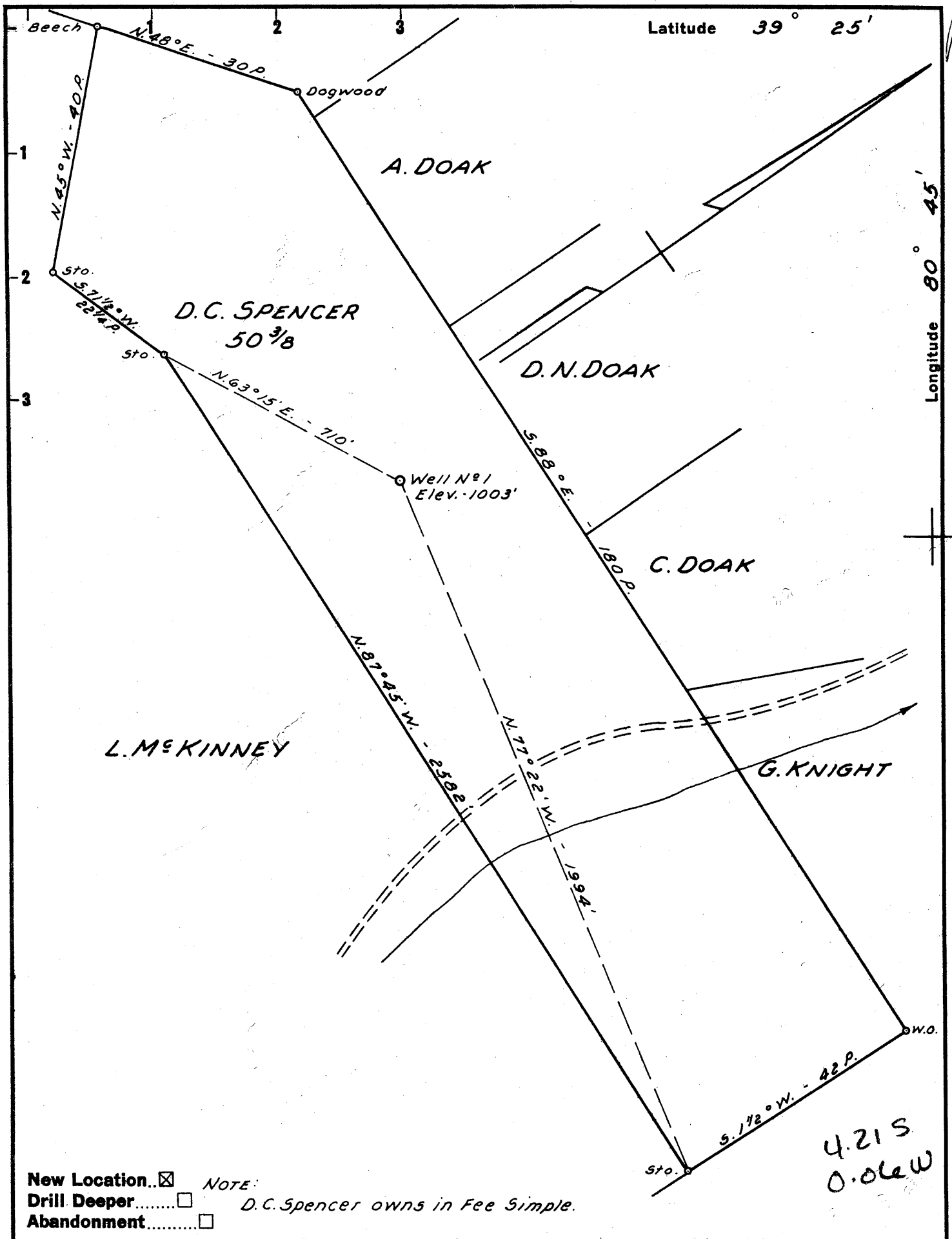
Company **ATHENS OIL & GAS CO.**
 Address General Delivery, West Union, W. Va.
 Farm Vonda 1 Leggett
 Tract _____ Acres 70 Lease No. _____
 Well (Farm) No. Two Serial No. _____
 Elevation (Spirit Level) 1109
 Quadrangle West Union SC
 County Doddridge District Central
 Engineer W. H. ...
 Engineer's Registration No. 1227
 File No. _____ Drawing No. _____
 Date Oct 26, 1960 Scale 1" = 400'

STATE OF WEST VIRGINIA
 DEPARTMENT OF MINES
 OIL AND GAS DIVISION
 CHARLESTON

WELL LOCATION MAP
 FILE NO. DOD-493

— Denotes location of well on United States Topographic Maps, scale 1 to 62,500, latitude and longitude lines being represented by border lines as shown.

— Denotes one inch spaces on border line of original tracing.



New Location.. Note:
 Drill Deeper.....
 Abandonment..... D.C. Spencer owns in Fee Simple.

Company DALE COTTRILL & LEON BEAVER
 Address 103 KIBLER ST. WILLIAMSTOWN, W. VA.
 Farm D.C. SPENCER
 Tract _____ Acres 50 3/8 Lease No. _____
 Well (Farm) No. 1 Serial No. _____
 Elevation (Spirit Level) 1003'
 Quadrangle WEST UNION EC
 County DODDRIDGE District GRANT
 Engineer JOHN W. HAMILTON
 Engineer's Registration No. 2274
 File No. _____ Drawing No. _____
 Date OCT. 25, 1960 Scale 1" = 20 POLES

STATE OF WEST VIRGINIA
 DEPARTMENT OF MINES
 OIL AND GAS DIVISION
 CHARLESTON

WELL LOCATION MAP
 FILE NO. DOD-494

+ Denotes location of well on United States Topographic Maps, scale 1 to 62,500, latitude and longitude lines being represented by border lines as shown.

- Denotes one inch spaces on border line of original tracing.