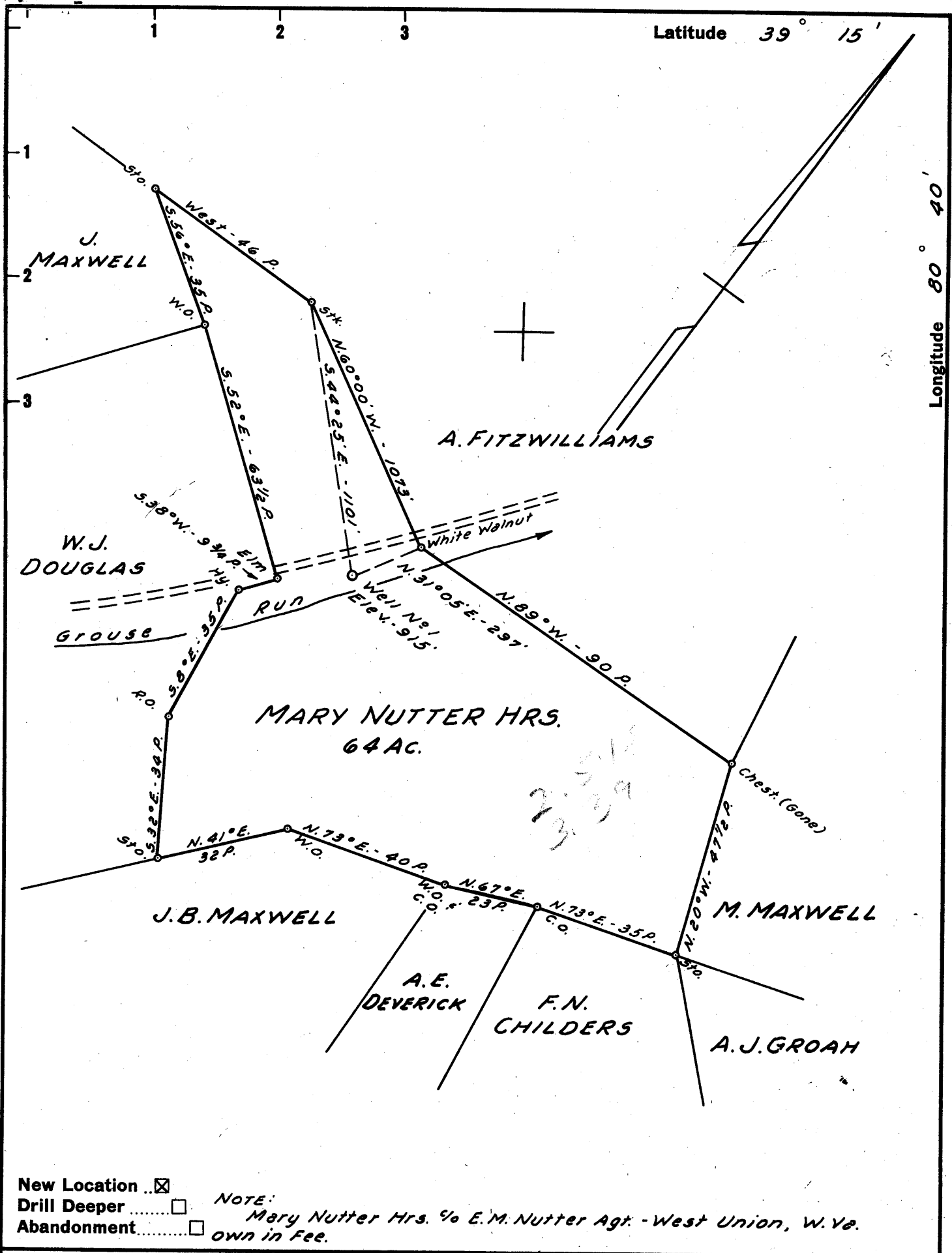


M

10



New Location  Drill Deeper  Abandonment

NOTE: Mary Nutter Hrs. 1/2 E.M. Nutter Agt. - West Union, W. Va. own in Fee.

Company TRIO OIL & GAS CO. INC.  
 Address 1/2 CHARTER STINESPRING WEST UNION, W. VA.  
 Farm MARY NUTTER, HRS.  
 Tract \_\_\_\_\_ Acres 64 Lease No. \_\_\_\_\_  
 Well (Farm) No. 1 Serial No. \_\_\_\_\_  
 Elevation (Spirit Level) 915'  
 Quadrangle VADIS NW  
 County DODDRIDGE District NEW MILTON  
 Engineer JOHN W. HAMILTON  
 Engineer's Registration No. 2274  
 File No. \_\_\_\_\_ Drawing No. \_\_\_\_\_  
 Date MAR. 12, 1961 Scale 1" = 30 POLES

STATE OF WEST VIRGINIA  
 DEPARTMENT OF MINES  
 OIL AND GAS DIVISION  
 CHARLESTON

**WELL LOCATION MAP**  
 FILE NO. DOD-537

+ Denotes location of well on United States Topographic Maps, scale 1 to 62,500, latitude and longitude lines being represented by border lines as shown.

- Denotes one inch spaces on border line of original tracing.

6-6 134



STATE OF WEST VIRGINIA  
DEPARTMENT OF MINES  
OIL AND GAS DIVISION 7

Quadrangle VADIS

Permit No. Dod 537

WELL RECORD

Oil or Gas Well Oil  
(KIND)

Company Trio Oil & Gas Co  
Address Box 564 West Union  
Farm MARY NUTTER HRS Acres 64  
Location (waters) Grouse Run  
Well No. 1 Elev 915'  
District NEW UNION County Doddridge  
The surface of tract is owned in fee by MARY NUTTER HRS  
Address \_\_\_\_\_  
Mineral rights are owned by SAME  
Address \_\_\_\_\_

Drilling commenced 3/18/61  
Drilling completed 4/26/61  
Date Shot \_\_\_\_\_ From \_\_\_\_\_ To \_\_\_\_\_  
With \_\_\_\_\_

Open Flow 2 10ths Water in 1" Inch  
/10ths Merc. in \_\_\_\_\_ Inch

Volume 14 M Cu. Ft.  
Rock Pressure 200 lbs. 24 hrs.  
Oil \_\_\_\_\_ bbls., 1st 24 hrs.

WELL ACIDIZED \_\_\_\_\_

WELL FRACTURED YES

RESULT AFTER TREATMENT 500,000 MCF

ROCK PRESSURE AFTER TREATMENT 785 40 min

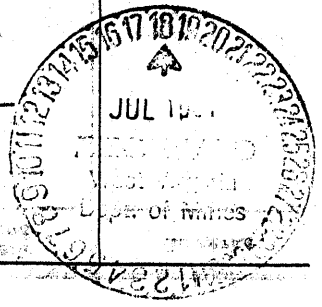
Fresh Water 1300' Feet Salt Water None Feet

Casing and Tubing	Used in Drilling	Left in Well	Packers
Size			Kind of Packer
18			
18			Size of
8 1/2	<u>273'</u>	<u>NONE</u>	
8 1/2	<u>985</u>	<u>550'</u>	
6 3/8	<u>1850</u>	<u>ALL</u>	Depth set
3			Perf. top
2			Perf. bottom
Liners Used			Perf. top
			Perf. bottom

CASING CEMENTED 5 1/2" SIZE 1850' No. Ft. 426/61 Date  
20 sks. Cement - 4 sks. Aquagel - Garaton Service

COAL WAS ENCOUNTERED AT	FEET	INCHES
FEET	INCHES	FEET
FEET	INCHES	FEET

Formation	Color	Hard or Soft	Top	Bottom	Oil, Gas or Water	Depth	Remarks
CLAY			0	15		15	
ROCK			15	35		20	
RED ROCK			35	40		05	
CLAY			40	55		15	
RED ROCK			55	65		10	
WHITE SLATE			65	80		15	
SAND			80	90		10	
RED ROCK			90	105		15	
WHITE SLATE			105	115		10	
SAND			115	165		50	
WHITE SLATE			165	175		10	
RED ROCK			175	185		10	
LIME			185	212		27	
RED ROCK			212	273		61	
LIME			273	283		10	
WHITE SLATE			283	293		10	
SAND			293	315		22	
SLATE			315	335		20	
SAND			335	370		35	
SLATE			370	450		80	
LIME			450	468		18	
SLATE SHELLS			468	540		72	



Formation	Color	Hard or Soft	Top $\gamma$	Bottom	Oil, Gas or Water	Depth Found	Remarks
LIME			540	550		10	
SLATE SHELLS			550	580		30	
RED ROCK			580	635		55	
SLATE			635	650		15	
SAND			650	670		20	
RED ROCK			670	675		5	
GRITTY LIME			675	695		20	
WHITE SLATE			695	720		25	
SLATE SHELLS			720	755		35	
BLACK SLATE			755	800		45	
SAND			800	810		10	
SLATE			810	850		40	
RED ROCK			850	864		14	
BLACK SLATE			864	887		23	
PINK ROCK			887	897		10	
SLATE			897	985		88	
LIME			985	1000		15	
SLATE WHITE			1000	1070		70	
SAND			1070	1140		70	
SLATE SHELLS			1140	1200		60	
LIME			1200	1225		25	
SLATE SHELLS			1225	1275		50	
SAND			1275	1340		65	
SLATE			1340	1412		72	
SAND			1412	1425		13	
B. SLATE			1425	1460		35	
GRITTY LIME			1460	1470		10	
B. SLATE			1470	1490		20	
SAND			1490	1578		88	
B. SLATE			1578	1585		7	
SAND			1585	1600		15	
SLATE			1600	1645		45	
SLATE SHELLS			1645	1700		55	
LIME			1700	1705		5	
RED ROCK			1705	1712		7	
B. SLATE			1712	1727		15	
LIME			1727	1735		8	
SAND			1735	1740		5	
SLATE			1740	1753		13	
LIME GRITTY			1753	1780		27	
SAND			1780	1795	oil	15	
B. LIME			1795	1856		61	
SAND			1856	1872	gas	16	
LIME			1872	1878		6	
SAND			1878	1945	oil	67	
SHALE			1945				

Date April 30, 1921

APPROVED [Signature], Owner

By [Signature] (Title)