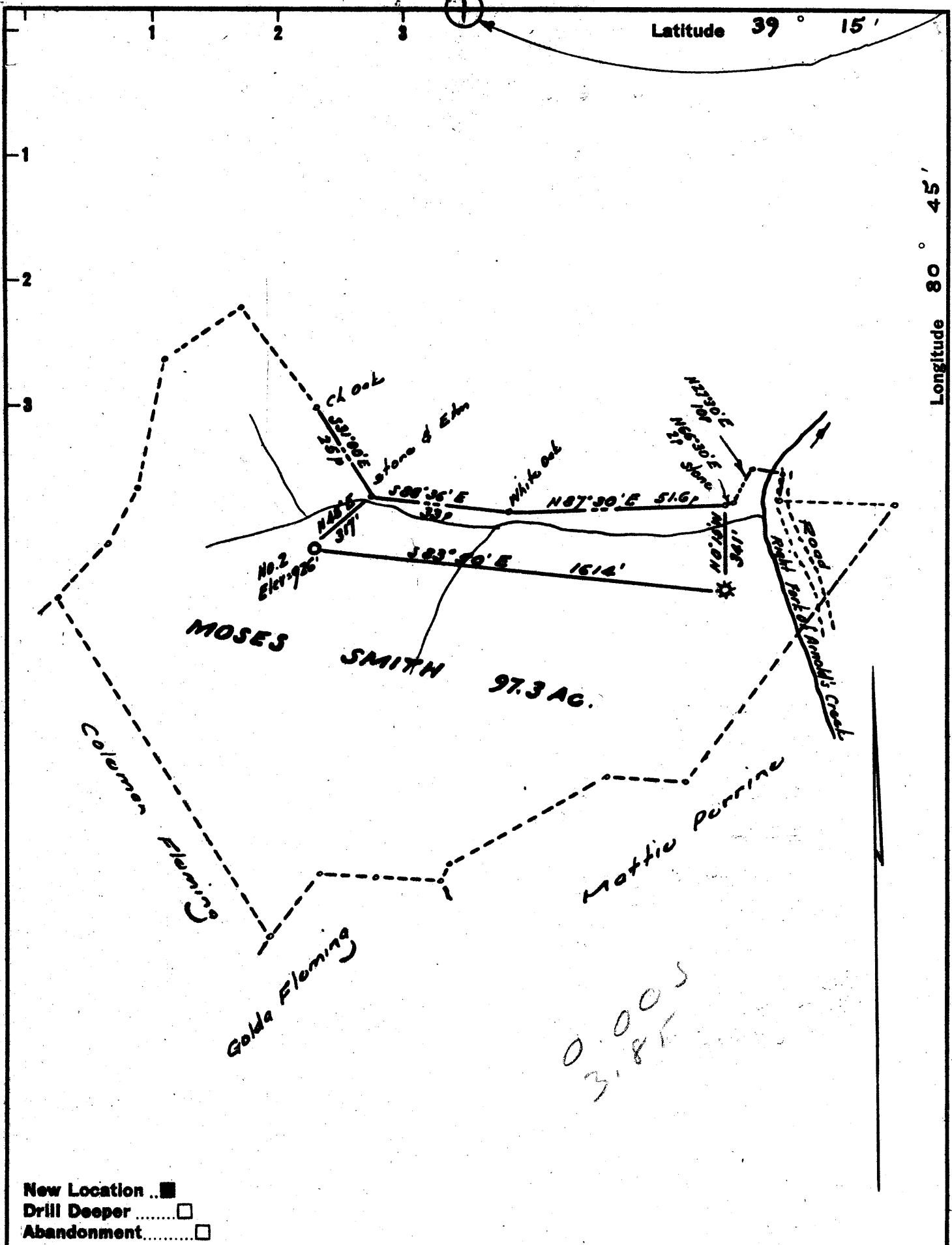


Latitude 39° 15'

Longitude 80° 45'



0.005  
3.85

- New Location ..
- Drill Deeper .....
- Abandonment.....

Company BOWER, HALL & NETZEL  
 Address To Old Netzel, West Union, W. Va.  
 Farm Moses Smith  
 Tract \_\_\_\_\_ Acres 97.3 Lease No. \_\_\_\_\_  
 Well (Farm) No. Two Serial No. \_\_\_\_\_  
 Elevation (Spirit Level) 926  
 Quadrangle Halbrook - NE  
 County Doddridge District West Union  
 Engineer Hubert J.  
 Engineer's Registration No. 1227  
 File No. \_\_\_\_\_ Drawing No. \_\_\_\_\_  
 Date April 1961 Scale 1" = 300'

STATE OF WEST VIRGINIA  
 DEPARTMENT OF MINES  
 OIL AND GAS DIVISION  
 CHARLESTON

**WELL LOCATION MAP**  
 FILE NO. DOD - 544

+ Denotes location of well on United States Topographic Maps, scale 1 to 62,500, latitude and longitude lines being represented by border lines as shown.

- Denotes one inch spaces on border line of original tracing.



STATE OF WEST VIRGINIA  
DEPARTMENT OF MINES  
OIL AND GAS DIVISION 4

Quadrangle WEST UNION

Permit No. DOD- 544

**WELL RECORD**

DRY

Oil or Gas Well ~~X~~ DRY  
(KIND)

Company BOWERS, HALL & WETZEL  
Address WEST UNION, W.VA.  
Farm MOSES SMITH # 2 Acres 98  
Location (waters) RIGHT HAND PRONG OF ARNOLD CREEK  
Well No. #2 Elev. 926  
District WEST UNION County DODDRIDGE  
The surface of tract is owned in fee by MOSE SMITH  
Address \_\_\_\_\_  
Mineral rights are owned by MOSE SMITH  
Address WEST UNION RT.  
Drilling commenced APRIL 28, 1961  
Drilling completed JUNE 19, 1961  
Date Shot \_\_\_\_\_ From \_\_\_\_\_ To \_\_\_\_\_  
With \_\_\_\_\_  
Open Flow 5 /10ths Water in BNE Inch  
\_\_\_\_\_ /10ths Merc. in \_\_\_\_\_ Inch  
Volume 50000 Cu. Ft.  
Rock Pressure 75 lbs. 72 hrs.  
Oil SHOW bbls., 1st 24 hrs.  
WELL ACIDIZED YES

Casing and Tubing	Used in Drilling	Left in Well	Packers
16	20'	20'	Kind of Packer _____
13			
10	61 1/2'		Size of _____
8 1/4	465'		
6 3/4	1116'		Depth set _____
5 3/16	1762 1/2'	1762 1/2'	
3			Perf. top _____
2			Perf. bottom _____
Liners Used			Perf. top _____
			Perf. bottom _____

CASING CEMENTED \_\_\_\_\_ SIZE 5 1/2 No. Ft. 300 Date  
20 SACKS OF CEMENT

COAL WAS ENCOUNTERED AT \_\_\_\_\_ FEET \_\_\_\_\_ INCHES  
\_\_\_\_\_ FEET \_\_\_\_\_ INCHES \_\_\_\_\_ FEET \_\_\_\_\_ INCHES  
\_\_\_\_\_ FEET \_\_\_\_\_ INCHES \_\_\_\_\_ FEET \_\_\_\_\_ INCHES

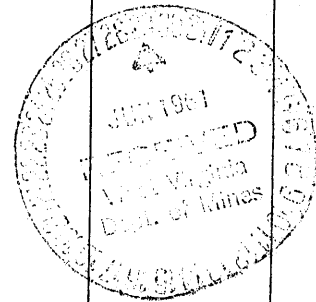
WELL FRACTURED YES

RESULT AFTER TREATMENT 29000 CU FT.

ROCK PRESSURE AFTER TREATMENT 250 24 Hours

Fresh Water 30 Feet Salt Water 1229 Feet

Formation	Color	Hard or Soft	Top	Bottom	Oil, Gas or Water	Depth	Remarks
CLAY			0	25			
ROCK	RED		25	58			
SAND		58	58	65	WATER	30'	
ROCK & SHELL	RED		65	115			
SAND			115	123			
ROCK, SLATE, SHELLS,			123	190			
SAND			190	195			
SLATE & ROCK	RED		195	300			
SAND			300	355			
LIME			355	375			
SLATE & ROCK	RED		375	450			
LIME			450	472			
ROCK	RED		472	480			
SLATE			480	490			
SAND			490	563			
SLATE & ROCK	RED		563	725			
SAND			725	787			
SLATE			787	800			
ROCK	RED		800	835			
LIME			835	850			
EXPOSED SLATE			850	857			
SAND			857	875			
LIME & SLATE			875	924			
SAND			924	957			
SLATE			957	993			
SAND			993	1003			
LIME			1003	1045			
SLATE			1045	1082			



Formation	Color	Hard or Soft	Top <i>4</i>	Bottom	Oil, Gas or Water	Depth Found	Remarks
SAND			1082	1112			
LIME			1112	1132			
SLATE & SHELLS			1132	1233	SALT WATER	1228	
SAND			1233	1295			
SLATE			1295	1310			
SAND			1310	1335			1ST SALT
WATER			1335	1350			
SLATE & SHELLS			1350	1480			
SAND			1480	1495			2ND SALT
SHATE			1495	1505			
LIME			1505	1530			
SLATE & SHELLS			1530	1618			
SAND		BROKEN	1618	1620			3RD SALT
SLATE			1620	1637			
LIME		GRITTY	1637	1700			
LIME			1700	1726			
SAND			1726	1741			
LIME			1741	1850	GAS	1792	MAXTON BIG INJUN
SAND			1850	1856			
SANDY LIME			1856	1860			
SAND			1860	1872			
LIME	BLACK		1872	1880			
SAND			1880	1914	GAS	1908	
SLATE & SHELL			1914	1925			

Date June 28, 1961  
APPROVED Beverly Hall & Co. Inc., Owner  
By Olin Bell, Eng.  
(Title)