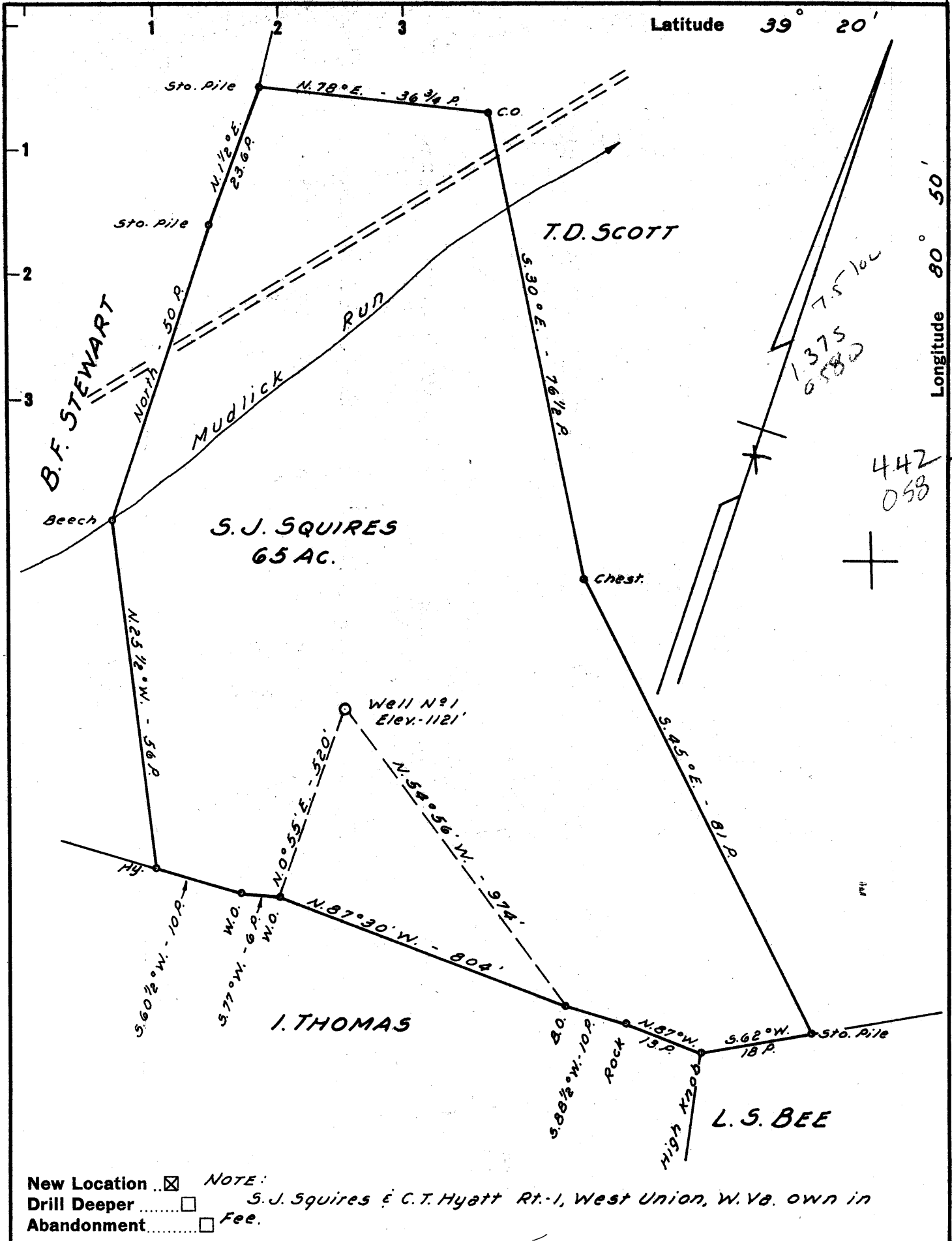


Latitude 39° 20'

Longitude 80° 50'



New Location NOTE:
 Drill Deeper S. J. Squires & C. T. Hyatt Rt. 1, West Union, W. Va. own in
 Abandonment Fee.

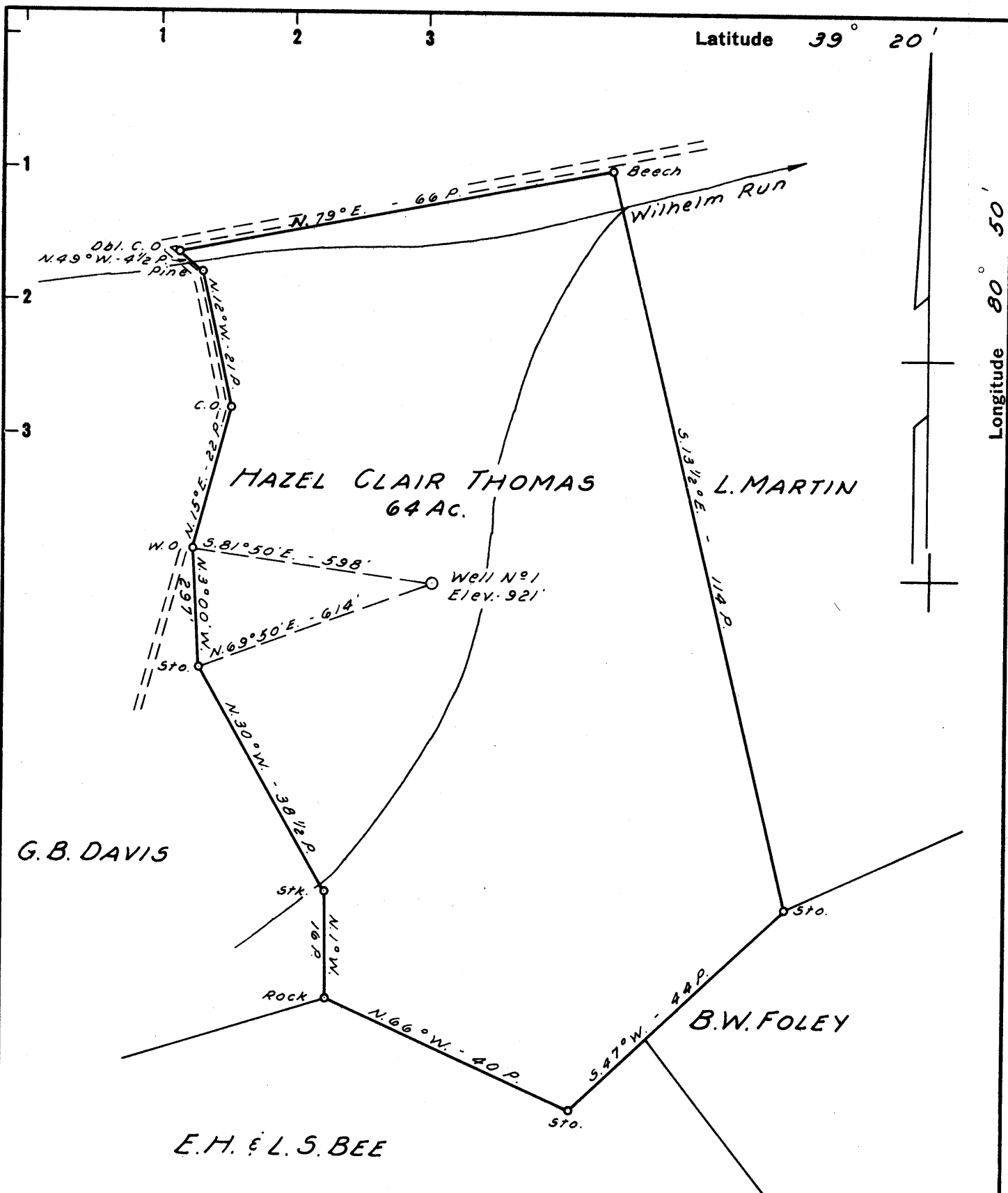
Company DAVID W. LAW
 Address 716 UNION TRUST BLDG. PARKERSBURG, W. VA.
 Farm S. J. SQUIRES
 Tract _____ Acres 65 Lease No. _____
 Well (Farm) No. 1 Serial No. _____
 Elevation (Spirit Level) 1121'
 Quadrangle WEST UNION SC
 County DODDRIDGE District CENTRAL
 Engineer JOHN W. HAMILTON
 Engineer's Registration No. 2274
 File No. _____ Drawing No. _____
 Date MAY 2, 1961 Scale 1" = 20 POLES

STATE OF WEST VIRGINIA
 DEPARTMENT OF MINES
 OIL AND GAS DIVISION
 CHARLESTON

WELL LOCATION MAP
 FILE NO. DoD-553
Canc - An Rept O&G Div 1961

+ Denotes location of well on United States Topographic Maps, scale 1 to 62,500, latitude and longitude lines being represented by border lines as shown.

- Denotes one inch spaces on border line of original tracing.



TRANSFERRED TO GLENN, INC.
P. O. BOX 427
CHARLESTON 22, WEST VIRGINIA

New Location NOTE:
Drill Deeper Hazel Clair Thomas Box 123, West Union, W. Va. owns in Fee.
Abandonment

Company DAVID LAW
Address 716 UNION TRUST BLDG. PARKERSBURG, W. VA.
Farm HAZEL CLAIR THOMAS
Tract _____ Acres 64 Lease No. _____
Well (Farm) No. 1 Serial No. _____
Elevation (Spirit Level) 921'
Quadrangle WEST UNION SC
County DODDRIDGE District CENTRAL
Engineer JOHN W. HAMILTON
Engineer's Registration No. 2274
File No. _____ Drawing No. _____
Date APRIL 30, 1961 Scale 1" = 20 POLES

STATE OF WEST VIRGINIA
DEPARTMENT OF MINES
OIL AND GAS DIVISION
CHARLESTON

WELL LOCATION MAP
FILE NO. DOD-554
conc - an. rept O&G Div. 7961
+ Denotes location of well on United States Topographic Maps, scale 1 to 62,500, latitude and longitude lines being represented by border lines as shown.
- Denotes one inch spaces on border line of original tracing.