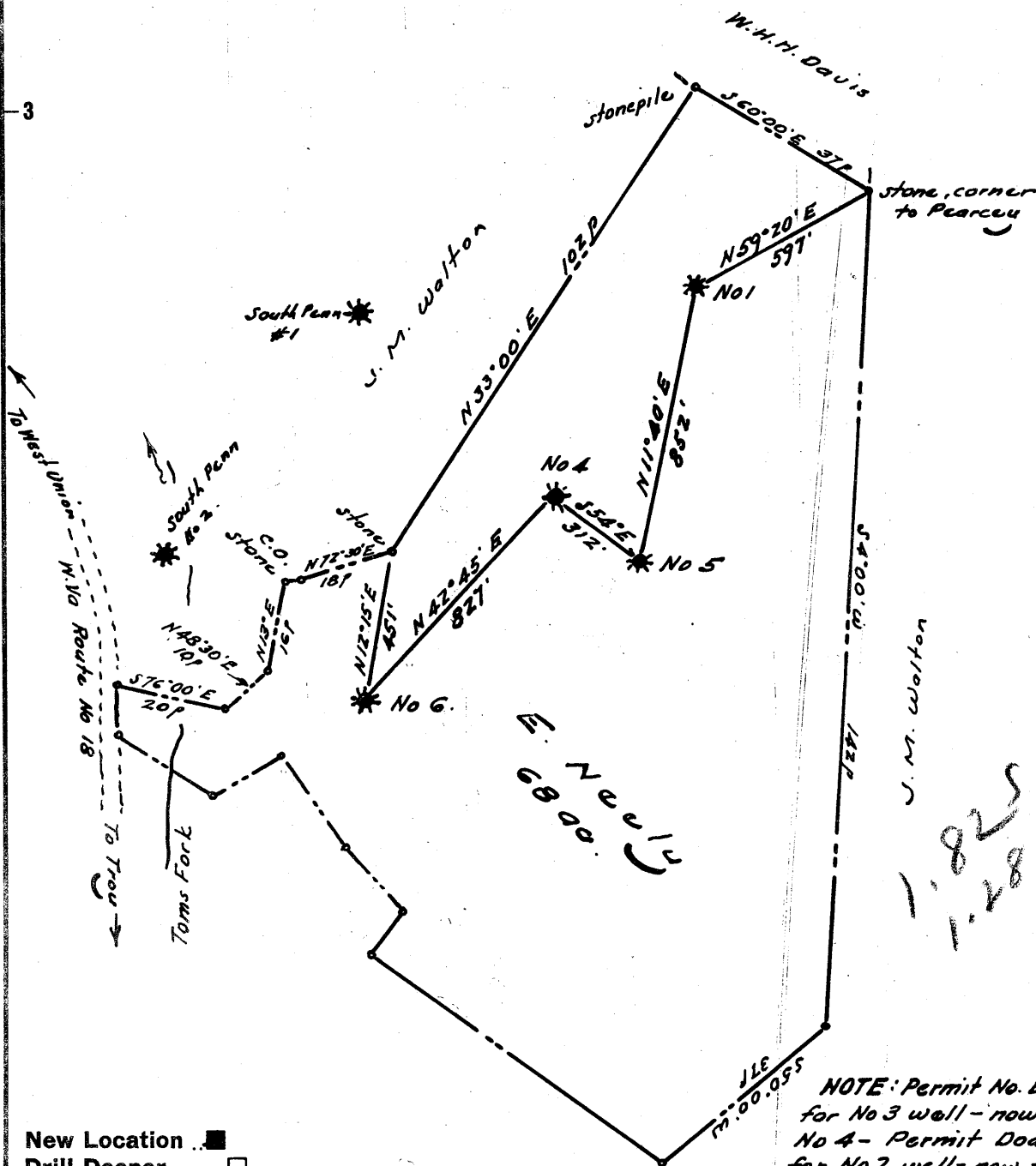


Latitude 39° 15'

Longitude 80° 40'



New Location   
 Drill Deeper   
 Abandonment

NOTE: Permit No. Dod-581 issued for No 3 well - now shown as No 4 - Permit Dod-582 issued for No 2 well - now shown as No. 5

Company Ferrill L. Prior  
 Address 700 Union Trust Bldg. Parkersburg.  
 Farm E. Newly  
 Tract \_\_\_\_\_ Acres 68 Lease No. \_\_\_\_\_  
 Well (Farm) No. 4 & 5 Serial No. \_\_\_\_\_  
 Elevation (Spirit Level) No 4 - 1001' No 5 - 1017'  
 Quadrangle Kodis NW  
 County Doddridge District New Milton  
 Engineer W. H. H. Davis  
 Engineer's Registration No. 1227  
 File No. \_\_\_\_\_ Drawing No. \_\_\_\_\_  
 Date Dec 1961 Scale 1" = 300'

STATE OF WEST VIRGINIA  
 DEPARTMENT OF MINES  
 OIL AND GAS DIVISION  
 CHARLESTON

WELL LOCATION MAP

FILE NO. Dod 581 (Revised)  
~~582~~ 582 (from ...)

+ Denotes location of well on United States Topographic Maps, scale 1 to 62,500, latitude and longitude lines being represented by border lines as shown.

- Denotes one inch spaces on border line of original tracing.



STATE OF WEST VIRGINIA  
DEPARTMENT OF MINES  
OIL AND GAS DIVISION

Quadrangle Vadis

Permit No. DOD-582

WELL RECORD

Oil or Gas Well Oil  
(KIND)

Company Ferrell L. Prior  
 Address 720 Union Trust Bldg. Parkersburg, W. Va.  
 Farm E. Neely Acres 68  
 Location (waters) Tom's Fork  
 Well No. Five Elev. 987  
 District New Milton County Doddridge  
 The surface of tract is owned in fee by Russell C. Enlow  
 Address Dalhart, Texas  
 Mineral rights are owned by Russell C. Enlow  
 Address Dalhart, Texas  
 Drilling commenced November 22, 1961  
 Drilling completed December 12, 1961  
 Date Shot From To  
 With  
 Open Flow /10ths Water in Inch  
 /10ths Merc. in Inch  
 Volume Not taken Cu. Ft.  
 Rock Pressure Not taken lbs. hrs.  
 Oil show - oil & gas bbls., 1st 24 hrs.  
 WELL ACIDIZED

Casing and Tubing	Used in Drilling	Left in Well	Packers
Size			
16			Kind of Packer
13			Size of
10	40'	40'	Depth set
8 1/4			Perf. top 2114
6 3/8	2161'	2161'	Perf. bottom 2116
5 1/2			Perf. top
3			Perf. bottom
2			
Liners Used			

CASING CEMENTED 4 1/2 SIZE 2161 No. Ft. 12-3-61 Date  
30 sks. cement LAWSON

COAL WAS ENCOUNTERED AT None FEET INCHES  
FEET INCHES FEET INCHES  
FEET INCHES FEET INCHES

WELL FRACTURED 900 bbls. water 300 sacks sand  
 Drilled with rotary circulating gel  
 RESULT AFTER TREATMENT 2 bbls. fluid per hour  
 ROCK PRESSURE AFTER TREATMENT 500 bbls. 24 hours  
 Fresh Water Feet Salt Water Feet

Formation	Color	Hard or Soft	Top	Bottom	Oil, Gas or Water	Depth	Remarks
Surface			0	35			
Red rock			35	68			
Shale			68	252			
Sand			252	269			
Red rock & shale			269	277			
Sand			277	328			
Shale			328	465			
red rock			465	475			
Sand			475	651			
Lime & shells			651	697			
Shale			697	848			
Sand			848	954			
Shale & sand			954	1576			
Sand			1576	1642			
Shale			1642	1789			
Sand			1789	1800			
Shale			1800	1940			
Sand			1940	1952			
Shale			1952	1962			Maxon
Lime			1962	2044			Big Lime
Shale			2044	2046			
Sand			2046	2130	Oil & gas	2110-2130	Injun Sand

(over)

