

F.A. Schulte  
 Surface: Andrew Hurst, Est. 77±  
 % S.E. & W.J. Hurst, Agents.  
 Rt. #1, Auburn, W. Va.  
 Coal: No Commercial Coal.

New Location   
 Drill Deeper   
 Abandonment

MAP T S23 W9

Company	SOUTH PENN OIL CO.
Address	PARKERSBURG, W. Va.
Farm	Andrew Hurst
Tract	Acres 300 Lease No. 73592
Well (Farm) No.	3 Serial No.
Elevation (Spirit Level)	943.83' ground
Quadrangle	HOLBROOK
County	Doddridge District Cove
Engineer	A.C. Hillant
Engineer's Registration No.	2534
File No.	1347 Drawing No.
Date	Aug. 24, 1961 Scale 1" = 800'

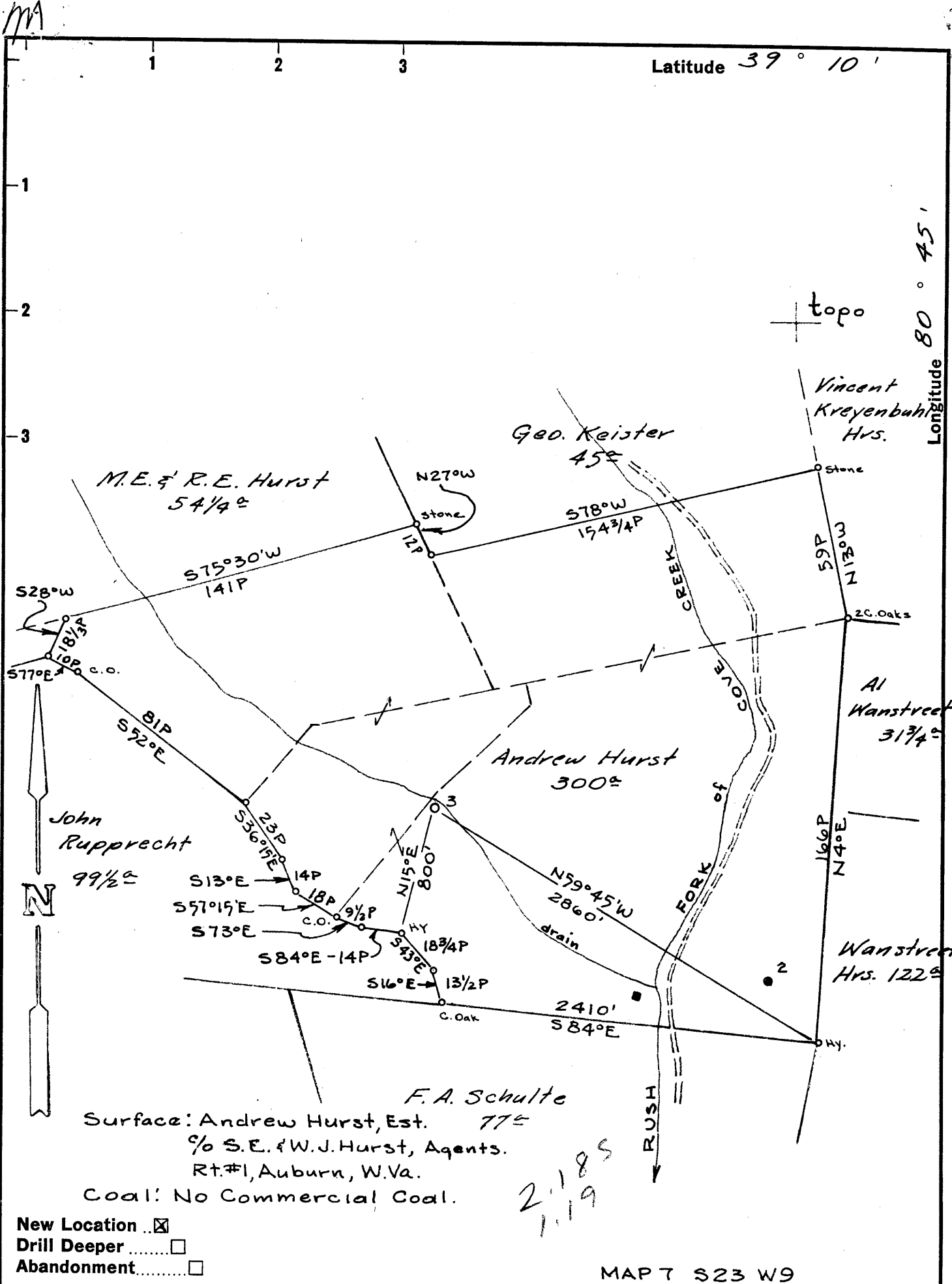
STATE OF WEST VIRGINIA  
 DEPARTMENT OF MINES  
 OIL AND GAS DIVISION  
 CHARLESTON

**WELL LOCATION MAP**  
 FILE NO. DOD-613-P

+ Denotes location of well on United States Topographic Maps, scale 1 to 62,500, latitude and longitude lines being represented by border lines as shown.

- Denotes one inch spaces on border line of original tracing.

DEC 4 1981



F. A. Schulte  
 Surface: Andrew Hurst, Est. 77<sup>±</sup>  
 % S.E. & W.J. Hurst, Agents.  
 Rt. #1, Auburn, W. Va.  
 Coal: No Commercial Coal.

2.185  
 1.119

- New Location
- Drill Deeper
- Abandonment

MAP 7 S23 W9

Company	SOUTH PENN OIL CO.
Address	PARKERSBURG, W. Va.
Farm	Andrew Hurst
Tract	Acres 300 Lease No. 73592
Well (Farm) No.	3 Serial No.
Elevation (Spirit Level)	943.83' ground
Quadrangle	HOLBROOK - EC
County	Doddridge District Cove
Engineer	A. C. Hillcut
Engineer's Registration No.	2534
File No.	1347 Drawing No.
Date	Aug. 24, 1961 Scale 1" = 800'

STATE OF WEST VIRGINIA  
 DEPARTMENT OF MINES  
 OIL AND GAS DIVISION  
 CHARLESTON

**WELL LOCATION MAP**  
 FILE NO. DOD-613

+ Denotes location of well on United States Topographic Maps, scale 1 to 62,500, latitude and longitude lines being represented by border lines as shown.

- Denotes one inch spaces on border line of original tracing.



STATE OF WEST VIRGINIA  
DEPARTMENT OF MINES  
OIL AND GAS DIVISION 3

Quadrangle HOLBROOK

Permit No. DOD-613

**WELL RECORD**

Oil or Gas Well Gas

Company SOUTH PENN OIL COMPANY  
Address P. O. Box 1280, Parkersburg, W. Va.  
Farm Andrew Hurst Acres 300  
Location (waters) Rush Fork of Cove Creek  
Well No. 3 Elev. 943.83  
District Cove County Doddridge  
The surface of tract is owned in fee by Andrew Hurst, Est.  
c/o S. E. & W. J. Hurst, Agents  
Rt. #1 Address Auburn, W. Va.  
Mineral rights are owned by W. J. Hurst & Sherman E. Hurst  
c/o W. J. Hurst Rt. #1 Agents  
Address Auburn, W. Va.  
Drilling commenced September 14, 1961  
Drilling completed October 14, 1961  
Date Shot - From - To -  
With -  
Open Flow 9 /10ths Water in 3/8 Inch  
- /10ths Merc. in - Inch  
Volume 3,200 Cu. Ft.  
Rock Pressure 130 lbs. 48 hrs.  
Oil None bbls., 1st 24 hrs.  
WELL ACIDIZED -

Casing and Tubing	Used in Drilling	Left in Well	Packers
Size			Kind of Packer <u>-</u>
16			
13			
10 3/4"	297' 4"	NONE	Size of <u>-</u>
8 1/4"	1100'	NONE	
8 3/8" 7"	1977'	1977'	Depth set <u>-</u>
3			Perf. top <u>-</u>
2			Perf. bottom <u>-</u>
Liners Used			Perf. top <u>-</u>
			Perf. bottom <u>-</u>

WELL FRACTURED 10/24/61 by Dowell

RESULT AFTER TREATMENT Gas - 40,000 Cu. Ft.  
Oil - None

ROCK PRESSURE AFTER TREATMENT 500 Lbs. 24 Hours

Fresh Water - Feet Salt Water - Feet

Formation	Color	Hard or Soft	Top	Bottom	Oil, Gas or Water	Depth	Remarks
Clay			0	14			
Lime			14	25			
Slate			25	35			
Lime			35	50			
Red Rock			50	65	Water	45	
Lime			65	85			
Slate			85	110			
Lime			110	130			
Red Rock			130	155			
Lime			155	175			
Red Rock			175	195			
Lime			195	220			
Red Rock			220	228			
Lime			228	243			
Red Rock			243	265			
Lime			265	295			
Red Rock			295	330			
Lime			330	335			
Sand			335	350			
Red Rock			350	363			
Lime			363	373			
Sand			373	414			
Slate & Shells			414	440			
Red Rock			440	465			
Slate & Shells			465	482			
Red Rock			482	490			
Slate & Shells			490	518			

Formation	Color	Hard or Soft	Top <sup>3</sup>	Bottom	Oil, Gas or Water	Depth Found	Remarks
Lime			518	530			
Slate			530	613			
Red Rock			613	645			
Lime			645	652			
Red Rock			652	802			
Lime			802	815			
Slate & Shells			815	912			
Red Rock			912	925			
Lime			925	935			
Slate & Shells			935	965			
Slate Shells & Red Rock			965	1080			
Big Dunkard			1080	1117			
Slate & Shells			1117	1162			
Gritty Lime			1162	1195			
Slate & Shells			1195	1245			
Sand			1245	1260			
Slate			1260	1268			
Sand			1268	1288			
Gritty Lime			1288	1330			
Slate			1330	1365			
Sand			1365	1452			
Slate			1452	1551			
1st. Salt Sand			1551	1584			
Slate			1584	1590			
Sand			1590	1605			
Slate & Lime Shells			1605	1660			
Black Slate			1660	1711			
Sand			1711	1750			
Slate			1750	1790	Water	1735	
Black Slate			1790	1820			
Lime Broken			1820	1851			
Maxton Sand			1851	1860			
Lime			1860	1890			
Slate			1890	1896			
Lime			1896	1908			
Big Lime			1908	1978			
Big Injun			1978	2068			
Slate			2068	2094	Gas	1986-1990	
Total Depth				2094			

Date November 17, 19 61.

APPROVED SOUTH PENN OIL COMPANY, Owner

By George W. Wilsman  
George W. Wilsman (Title) Land Agent

