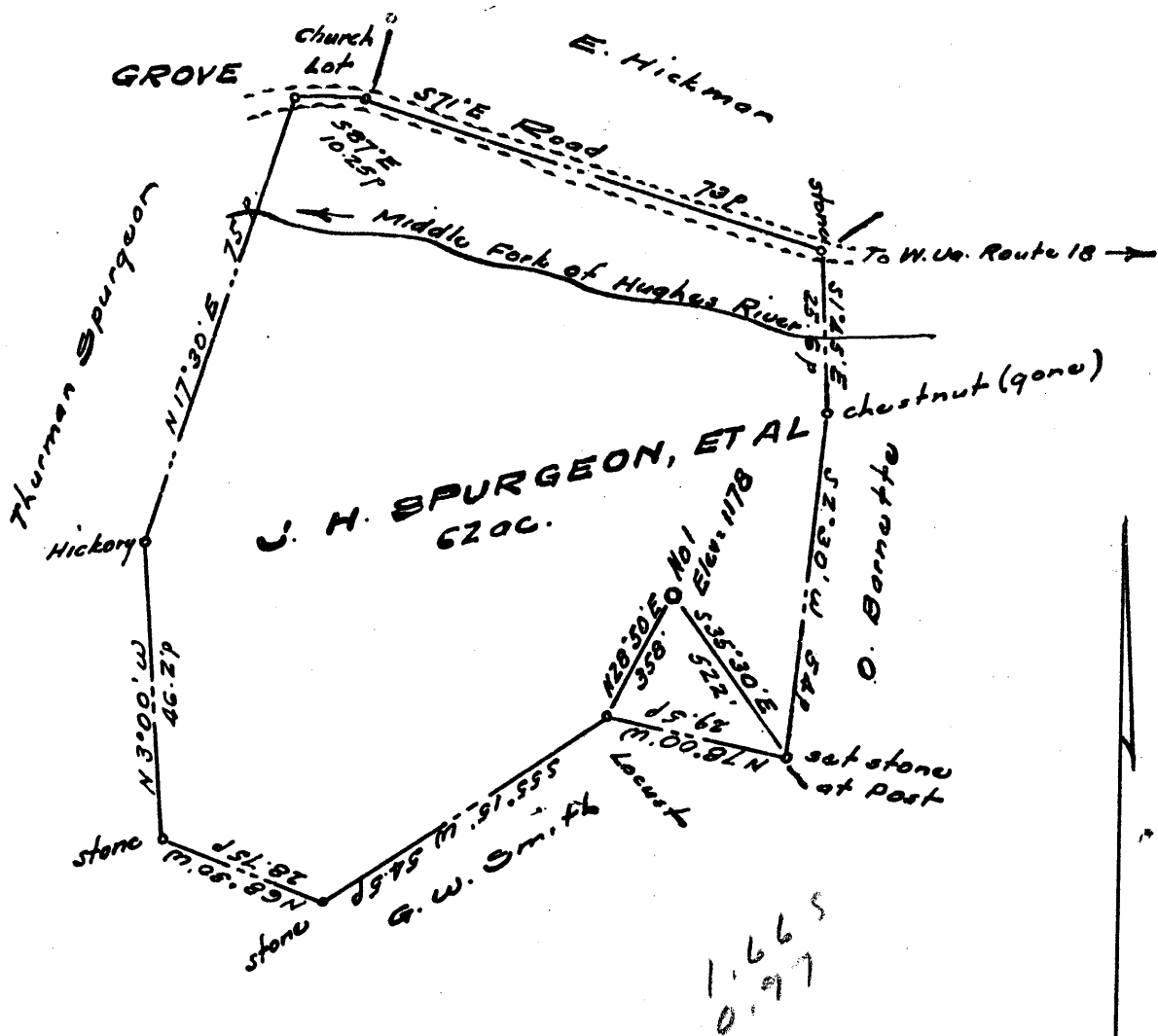


Latitude 39° 10'

Longitude 80° 45'



1.665  
0.97

- New Location ..
- Drill Deeper .....
- Abandonment.....

Company OLIN B. WETZEL

Address Box 94, West Union, W. Va.

Farm J. H. Spurgeon, et al

Tract \_\_\_\_\_ Acres 62 Lease No. \_\_\_\_\_

Well (Farm) No. One Serial No. \_\_\_\_\_

Elevation (Spirit Level) 1178

Quadrangle Halbrook - EC

County Doddridge District Cane

Engineer Wetzel

Engineer's Registration No. 1227

File No. \_\_\_\_\_ Drawing No. \_\_\_\_\_

Date August 1901 Scale 1" = 300'

STATE OF WEST VIRGINIA  
DEPARTMENT OF MINES  
OIL AND GAS DIVISION  
CHARLESTON

**WELL LOCATION MAP**

FILE NO. Red-621

+ Denotes location of well on United States Topographic Maps, scale 1 to latitude and longitude lines being represented by border lines as shown.

- Denotes one inch spaces on border line of original tracing.



STATE OF WEST VIRGINIA  
DEPARTMENT OF MINES  
OIL AND GAS DIVISION 4

Quadrangle HOLBROOK

Permit No. DOD-621

WELL RECORD

Oil or Gas Well Dry  
(KIND)

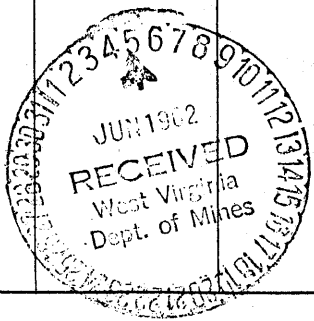
Company OLIN B. WETZEL AGT  
Address WEST UNION, W. VA.  
Farm J. H. SPURGEON Acres 62  
Location (waters) RUSH FORK  
Well No. 1 Elev. 1178  
District COVE County DODDRIDGE  
The surface of tract is owned in fee by Mrs. Robert Hill  
Address R#1 Rubicon W. Va.  
Mineral rights are owned by J. H. Spurgeon & others  
Address R#1 Rubicon W. Va.  
Drilling commenced April 14 1962  
Drilling completed May 17 1962  
Date Shot From To  
With  
Open Flow 6/10ths Water in 1 Inch  
10ths Merc. in 1 Inch  
Volume 52 Cu. Ft.  
Rock Pressure            lbs.            hrs.  
Oil            bbls., 1st 24 hrs.  
WELL ACIDIZED           

Casing and Tubing	Used in Drilling	Left in Well	Packers
Size			Kind of Packer
16			
13			
10	306	-0-	Size of
8 3/4	617	617	
6 3/4	1210	-0-	Depth set
5 3/16	2268	2268	
3			Perf. top
2			Perf. bottom
Liners Used			Perf. top
			Perf. bottom

WELL FRACTURED yes  
RESULT AFTER TREATMENT NO good  
ROCK PRESSURE AFTER TREATMENT 170# 15hr. on vacuum  
Fresh Water            Feet Salt Water            Feet

CASING CEMENTED            SIZE 5 1/2" No. Ft. 5/14/62 Date  
20 BAGS CEMENT & 4 BAGS JEL  
COAL WAS ENCOUNTERED AT            FEET            INCHES  
           FEET            INCHES            FEET            INCHES  
           FEET            INCHES            FEET            INCHES

Formation	Color	Hard or Soft	Top	Bottom	Oil, Gas or Water	Depth	Remarks
TOP SOIL			0=	10			
CLAY			10	20			
RED ROCK			20	60			
SAND			60	100			
LIME			100	147			
<del>XXXXXXXXXX</del> RED ROCK			147	170			
LIME	BLACK		170	220			
SLATE	COAL BLOSSON		220	221			
BROKEN LIME			221	246			
RED ROCK		246	246	340			
LIME			340	390			
RED ROCK			390	402			
LIME			402	412			
RED ROCK			412	433			
LIME	GREY		433	465			
SLATE			465	485			
RED ROCK			485	516			
SAND			516	538			
RED ROCK			538	597			
LIME	GREY		597	615			
SAND			615	655			
RED ROCK			655	662			
LIME			662	730			
RED ROCK			730	780			
LIME	BLACK		780	845			
RED ROCK			845	857			
LIME			857	890			
RED ROCK			890	900			
LIME		GRITTY	900	925			



Formation	Color	Hard or Soft	Top 4	Bottom	Oil, Gas or Water	Depth Found	Remarks
RED ROCK			925	1045			
LIME			1045	1120			
RED ROCK			1120	1210			
LIME			1210	1228			
RED ROCK			1228	1234			
LIME			1234	1317			
SAND			1317	1366			
LIME			1366	1410			
SAND			1410	1425			
LIME	BLACK	BROKEN	1425	1435			
LIME	GREY	HARD	1435	1457			
SLATE			1457	1485			
SAND			14.85	1517			
SLATE			1517	1525			
SAND			1525	1565			
LIME	BLACK		1565	1600			
SAND			1600	1635			
SLATE			1635	1680			
SAND			1680	1705			
SLATE			1705	1800			
SAND			1800	1868			
SLATE	SHELLS		1868	1950			
SAND			1950	1980			
SLATE	SHELLS		1980	2045			
SAND			2045	2058			
RED ROCK			2058	2060			
LIME			2060	2086			
SLATE			2086	2090			
LIME			2090	2105			
SLATE	2105x		21.05	2112			
LIME	BROKEN		2112	2122			
LIME		BLACK	2122	2126			
LIME			2126	2193			
SAND	(BIG INJUN)		2193	2270			
TOTAL DEPTH							
					GAS SHOWN See above	2218 TO 2232 -	2226 2272 2270.

Date JUNE 2, 19 62

APPROVED OLIN B. WETZEL AGT, Owner

By Olin B. Wetzel Agt  
(Title)