

Latitude 39° 20'

Longitude 80° 35'



0 1 2 3

1  
2  
3

Q. V. BAKER  
20 ACRES

NOW OR FORMERLY  
C. A. VANHORN

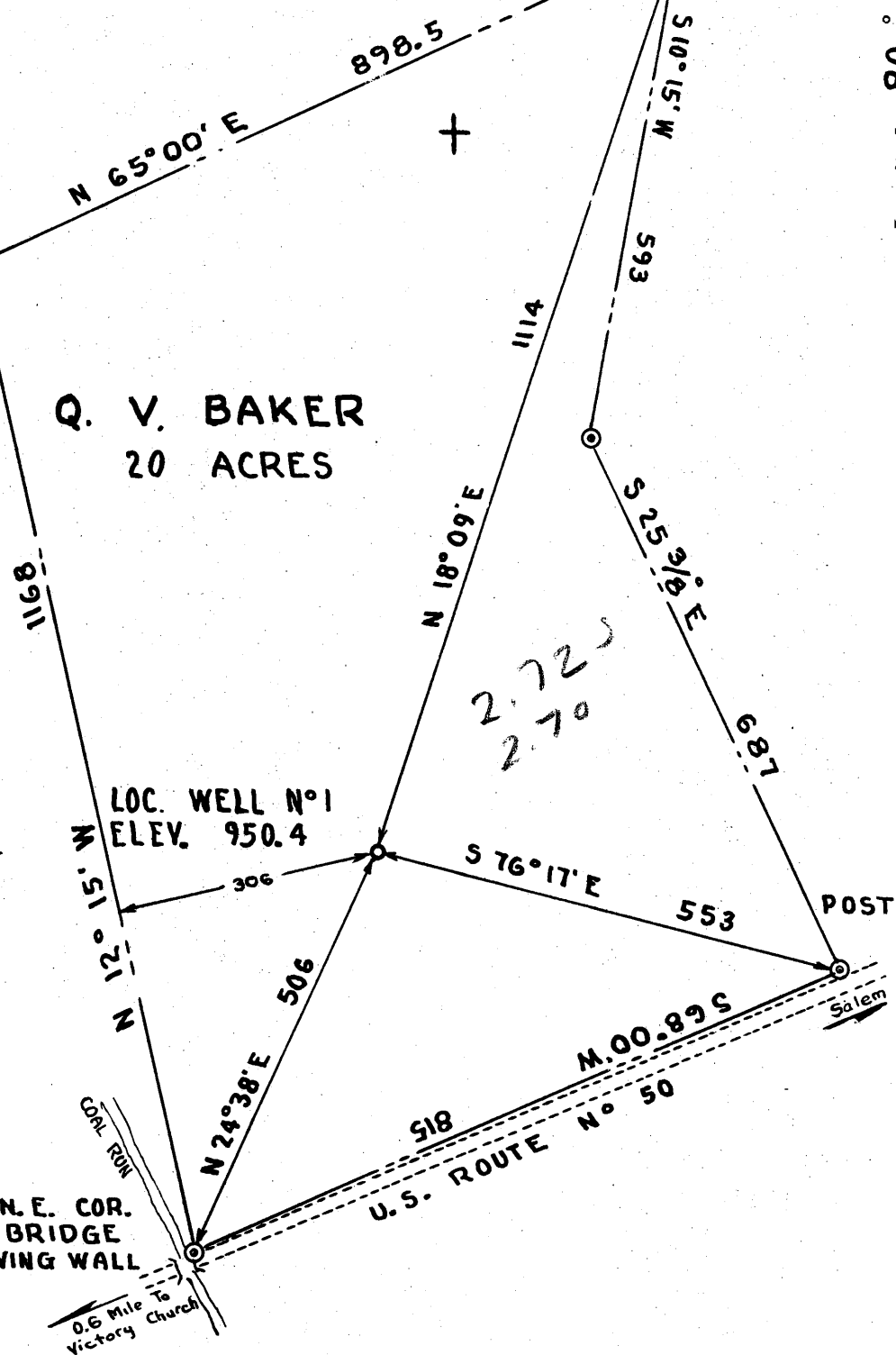
LOC. WELL N°1  
ELEV. 950.4

SET  
STONE

POST

N.E. COR.  
BRIDGE  
WING WALL

0.6 Mile To  
Victory Church



- Redrill.....
- New Location.
- Drill Deeper.....
- Abandonment.....

Company	<b>ROBERT L. HOLLAND</b>
Address	<b>WEST UNION, W.YA.</b>
Farm	<b>Q. V. BAKER</b>
Tract	Acres <b>20</b> Lease No.
Well (Farm) No.	<b>1</b> Serial No.
Elevation (Spirit Level)	<b>950.4</b>
Quadrangle	<b>CENTERPOINT - SC</b>
County	<b>DODDRIDGE</b> District <b>GRANT</b>
Engineer	<i>John C. Thrasher</i>
Engineer's Registration No.	<b>3229</b>
File No.	Drawing No.
Date	<b>SEPT. 2, 1961</b> Scale <b>1" = 200'</b>

STATE OF WEST VIRGINIA  
DEPARTMENT OF MINES  
OIL AND GAS DIVISION  
CHARLESTON

**WELL LOCATION MAP**

FILE NO. **DOD-634**

*plugged 11/27/1961*  
+ Denotes location of well on United States Topographic Maps, scale 1 to 62,500, latitude and longitude lines being represented by border lines as shown.

— Denotes one inch spaces on border line of original tracing.



STATE OF WEST VIRGINIA  
DEPARTMENT OF MINES  
OIL AND GAS DIVISION 2

Quadrangle Centerpoint

Permit No. DOD 634

WELL RECORD

Oil or Gas Well Dry  
Neither  
(KIND)

Company Robert L. Holland  
Address West Union, W. Va.  
Farm Q. V. Baker Acres 20  
Location (waters) Coal Run  
Well No. 1 Elev. 950.4  
District Grant County Doddridge  
The surface of tract is owned in fee by Q. V. Baker  
Address Salem, Rt. 2  
Mineral rights are owned by Q. V. Baker and  
Ed Orr Address \_\_\_\_\_  
Drilling commenced 18 September, 1961  
Drilling completed 27 October, 1961  
Date Shot none From \_\_\_\_\_ To \_\_\_\_\_  
With \_\_\_\_\_  
Open Flow \_\_\_\_\_ /10ths Water in \_\_\_\_\_ Inch  
\_\_\_\_\_ /10ths Merc. in \_\_\_\_\_ Inch  
Volume trace Cu. Ft.  
Rock Pressure 100 lbs. 36 hrs.  
Oil none bbls., 1st 24 hrs.  
WELL ACIDIZED 500 gal.

Casing and Tubing	Used in Drilling	Left in Well	Packers
Size			Kind of Packer
16			
13			
10	260		Size of
8 1/4	1100	1100	
6 3/4	1509		Depth set
5 3/16	1911	1911	
3			Perf. top
2			Perf. bottom
Liners Used			Perf. top
			Perf. bottom

CASING CEMENTED yes SIZE 5 3/16 No. Ft. \_\_\_\_\_ Date \_\_\_\_\_  
15 sks. cement - Garton Service

COAL WAS ENCOUNTERED AT 35 FEET 48 INCHES  
570 FEET 84 INCHES FEET INCHES  
FEET INCHES FEET INCHES

WELL FRACTURED Yes. Oct. 31, 1961 by Dowell

RESULT AFTER TREATMENT negative

ROCK PRESSURE AFTER TREATMENT not taken

Fresh Water 65', 1459' and 1770' Salt Water none Feet

Formation	Color	Hard or Soft	Top	Bottom	Oil, Gas or Water	Depth	Remarks
Red shale			0	10			
Yellow sand			10	25			
Slate			25	35			
Coal			35	39			
Black Slate			39	60			
Red Rock			60	80	Water	65'	
Slate			80	160			
Sand			160	210			
Slate			210	236			
Red Rock			236	246			
W-slate			246	310			
Lime Shells			310	430			
White slate			430	468			
Red rock			468	480			
Lime			480	490			
Slate & shells			490	530			
Sand			530	570			
Coal			570	577			
Slate			577	615			
Sand			615	660			
W. slate			660	685			
Red rock			685	695			
W. Slate			695	750			
Red rock			750	830			
W. slate			830	890			
Lime			890	905			
Red rock			905	950			
W. slate			950	1016			
Sand			1016	1046			

Formation	Color	Hard or Soft	Top <i>2</i>	Bottom	Oil, Gas or Water	Depth Found	Remarks
B. slate			1046	1095			
Sand			1095	1195			
B. slate			1195	1255			
Sand			1255	1286			
B. slate			1286	1350			
Sand			1350	1417			
B. slate			1417	1430			
Sand			1430	1495	Water	1459-1469	
Gritty lime sand			1495	1557			
			1557	1696			
B. Slate			1696	1740			
M. Sand			1740	1795			
Slate			1795	1800	Water	1770	
Lime			1800	1822			
slate			1822	1832			
Little lime			1832	1852			
Slate			1852	1882			
Big lime			1882	1961			
Sand			1961	2020			
Total depth			2037				

Date November 4, 19 61

APPROVED Robert M. Halland, Owner

By \_\_\_\_\_ (Title)