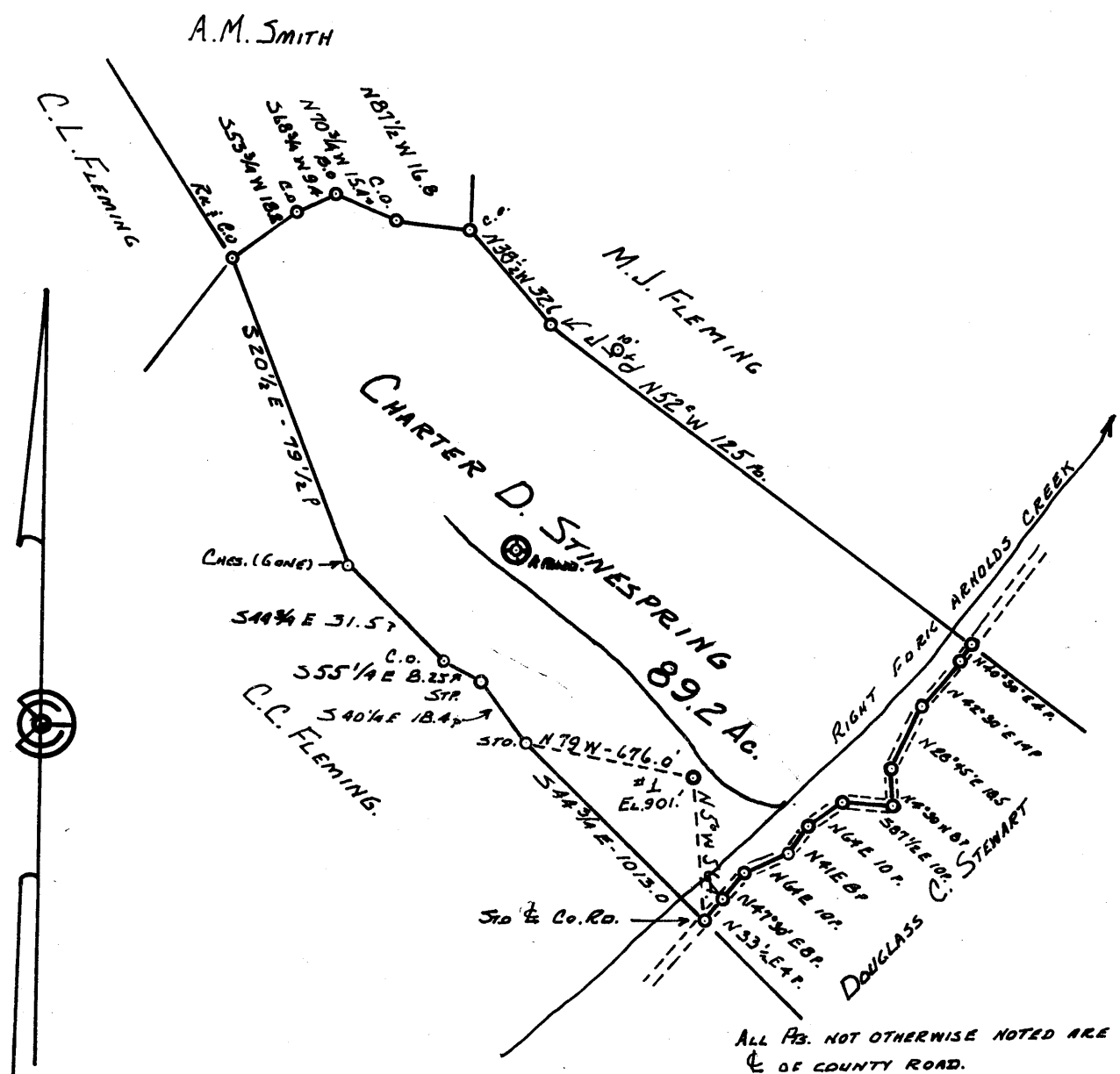


Latitude 39° 15'

Longitude 80° 45'



ALL PTS. NOT OTHERWISE NOTED ARE  
OF COUNTY ROAD.

0.595  
3.53

New Location   
 Drill Deeper   
 Abandonment

C.D. STINESPRING. ETUX OWN IN FEE SIMPLE.

Company TRIO OIL & GAS Co  
 Address WEST UNION, W.VA.  
 Farm CHARTER D STINESPRING  
 Tract \_\_\_\_\_ Acres 89.2 Lease No. \_\_\_\_\_  
 Well (Farm) No. 1 Serial No. \_\_\_\_\_  
 Elevation (Spirit Level) 901'  
 Quadrangle HOLBROOK. NE  
 County DODDRIDGE District WEST UNION  
 Engineer John W Hamilton  
 Engineer's Registration No. 2274  
 File No. \_\_\_\_\_ Drawing No. \_\_\_\_\_  
 Date Oct 14, 1961 Scale 1" = 660'

STATE OF WEST VIRGINIA  
 DEPARTMENT OF MINES  
 OIL AND GAS DIVISION  
 CHARLESTON

**WELL LOCATION MAP**  
 FILE NO. DOD-648

+ Denotes location of well on United States Topographic Maps, scale 1 to 62,500, latitude and longitude lines being represented by border lines as shown.

- Denotes one inch spaces on border line of original tracing.

66 122

Your letter dated January 8th states you are in receipt of cementing record from Garaton Service.



STATE OF WEST VIRGINIA  
DEPARTMENT OF MINES  
OIL AND GAS DIVISION 8

Quadrangle Holbrook

Permit No. DOD-648

WELL RECORD

Oil or Gas Well Gas  
(KIND)

Company Trio Oil and Gas Co., Inc.  
Address Box 264, West Union, West Va.  
Farm Charter Stinespring Acres 89 89  
Location (waters) Arnolds Creek  
Well No. #1 Elev. 901  
District West Union County Doddridge  
The surface of tract is owned in fee by Charter Stinespring Address West Union, W. Va.  
Mineral rights are owned by Same Address \_\_\_\_\_  
Drilling commenced 10/24/61  
Drilling completed 11/20/61  
Date Shot \_\_\_\_\_ From \_\_\_\_\_ To \_\_\_\_\_  
With \_\_\_\_\_  
Open Flow 2.00ths Water in 1" Inch  
\_\_\_\_\_ /10ths Merc. in \_\_\_\_\_ Inch  
Volume 47 mcf \_\_\_\_\_ Cu. Ft.  
Rock Pressure 40# lbs. 24 hrs.  
Oil \_\_\_\_\_ bbls., 1st 24 hrs.  
WELL ACIDIZED \_\_\_\_\_

Casing and Tubing	Used in Drilling	Left in Well	Packers
Size			Kind of Packer
16	20'	none	
13			
10	217	none	Size of
8 1/4	989	none	
6 3/8			Depth set
5 3/16	1824'	all	
3			Perf. top
2			Perf. bottom
Liners Used			Perf. top
			Perf. bottom

WELL FRACTURED yes

RESULT AFTER TREATMENT 250 mcf  
ROCK PRESSURE AFTER TREATMENT 80# 24 hrs  
Fresh Water \_\_\_\_\_ Feet 50' Salt Water 4 bailers hr \_\_\_\_\_ Feet 1190'

Formation	Color	Hard or Soft	Top	Bottom	Oil, Gas or Water	Depth	Remarks
Soil			0	8		8	
Gravel			8	16		8	
Line Shells			16	40		24	
Sand			40	60		20	
Red Rock			60	180		120	
Sand			180	215		35	
Slate			215	235		20	
Sand			235	250		15	
Red Rock			250	280		30	
Slate			280	310		30	
Lime			310	360		50	
SLate			360	430		70	
Red Rock			430	475		45	
Sand			475	500		25	
Shale			500	560		60	
Lime			560	580		20	
Sand			580	640		60	
Slate			640	665		25	
Red Rock			665	720		55	
Shale			720	807		87	
Sand			807	822		15	
Slate & Shells			822	840		18	
Pink Rock			840	868		28	
Big Dunkard			868	946	Show oil	78	
Shale			946	1005		59	
Lime			1005	1016		11	
Slate			1016	1080		64	
Sand			1080	1205		125	
Slate			1205	1360		155	

Formation	Color	Hard or Soft	Top <i>S</i>	Bottom	Oil, Gas or Water	Depth Found	Remarks
Sand	Slate & Shells		1360	1410		50	
Slate			1410	1454		44	
Sand			1454	1497	gas& oil	43	
Slate			1497	1472		25	
Sand			1472	1592		120	
Slate			1592	1603		11	
Lime			-1603	1634		31	
Pencil Cave			1634	1640		6	
Big Lime			-1640	1718		78	
Sand			1718	1746		28	
Lime			1746	1762		16	
Sand			1762	1791	gas& oil	29	
Slate			1791	1824		33	

Date \_\_\_\_\_, 19\_\_\_\_

APPROVED \_\_\_\_\_, Owner

By \_\_\_\_\_ (Title)