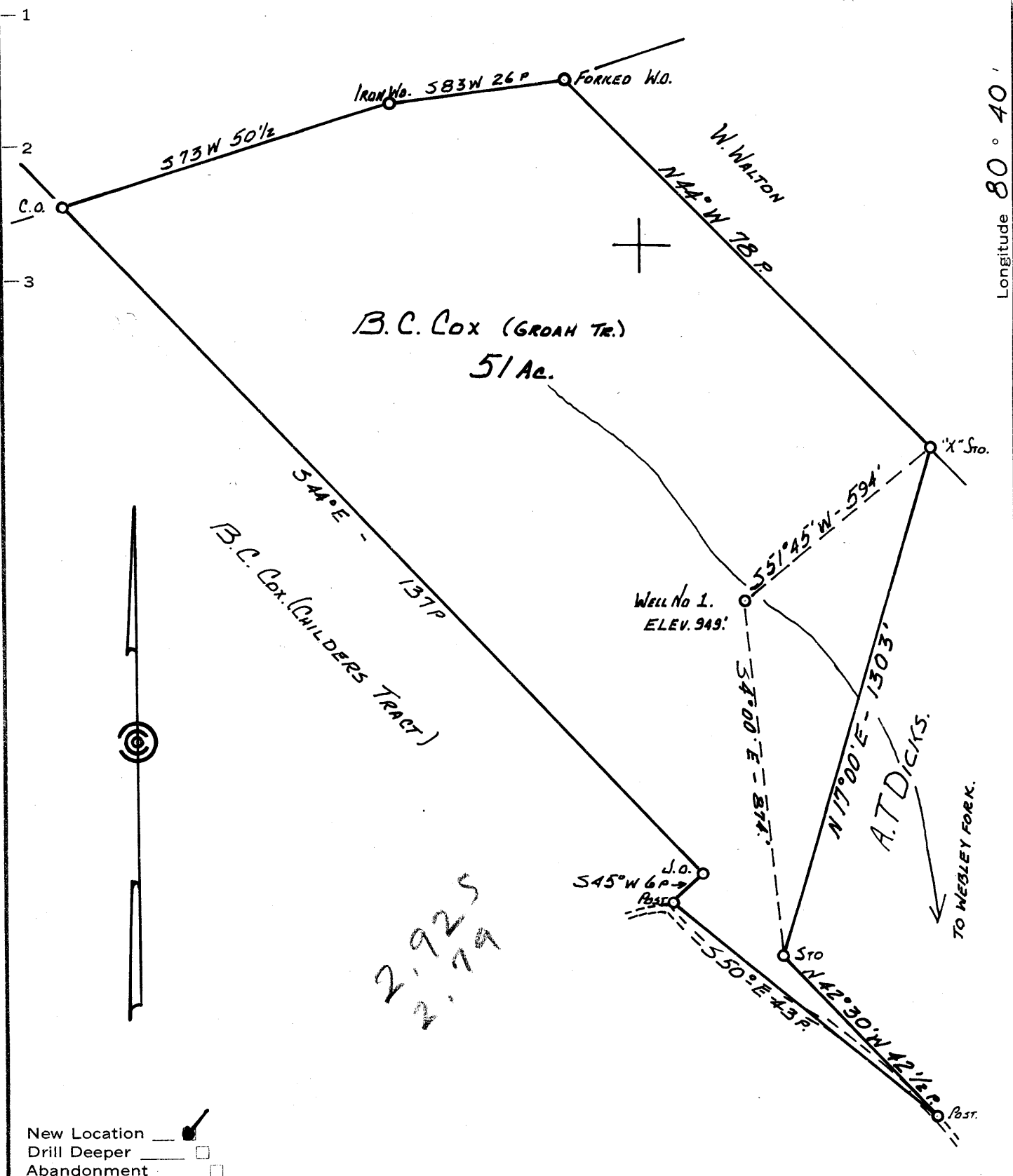


M

Latitude 39 ° 15'

Longitude 80 ° 40'

M. MAXWELL.



New Location

Drill Deeper

Abandonment

Company TRIO OIL & GAS Co. Inc

Address P.O. Box 264. WEST UNION. W.Va.

Farm B.C. Cox

Tract GROAH Acres 51 Lease No. _____

Well (Farm) No. 1 Serial No. _____

Elevation (Spirit Level) 949'

Quadrangle VADIS NW

County DODDRIDGE District NEW MILTON

Engineer John W. Hamilton

Engineer's Registration No. 2274

File No. _____ Drawing No. _____

Date Nov 13, 1961 Scale 1" = 20 FEET

STATE OF WEST VIRGINIA
DEPARTMENT OF MINES
OIL AND GAS DIVISION
CHARLESTON

WELL LOCATION MAP
FILE NO. DOD-665

+ Denotes location of well on United States Topographic Maps, scale 1 to 62,500, latitude and longitude lines being represented by border lines as shown.

— Denotes one inch spaces on border line of original tracing.

6-6 154



STATE OF WEST VIRGINIA
DEPARTMENT OF MINES
OIL AND GAS DIVISION 6

Quadrangle Vadie

Permit No. Pod 665

WELL RECORD

Oil or Gas Well Combination
(KIND)

Company TRIO OIL AND GAS CO.
Address Box 244 WEST UNION W.V.A.
Farm B.C. COX (GROAN) Acres 51
Location (waters) WEBLEY FORK
Well No. _____ Elev. 949'
District NEW MOUNTAIN County Doddridge
The surface of tract is owned in fee by B.C. COX
CHARKSBURG Address 115 N. W. 1st
Mineral rights are owned by SAME
Address _____

Drilling commenced 9/1/62
Drilling completed 9/21/62
Date Shot _____ From _____ To _____
With _____

Open Flow _____ /10ths Water in _____ Inch
23 /10ths Merc. in 2" Inch
Volume 267 MCF Cu. Ft.
Rock Pressure 780 lbs. 24 hrs.
Oil 30 bbls., 1st 24 hrs.
WELL ACIDIZED _____

WELL FRACTURED YES

RESULT AFTER TREATMENT 400 B.B.P. Oil 24' HRS 2000 MCF
ROCK PRESSURE AFTER TREATMENT 700#
Fresh Water 40' Feet Salt Water 1976 Feet

Casing and Tubing	Used in Drilling	Left in Well	Packers
Size			Kind of Packer
16		<u>18'</u> YES	
13			
10			Size of
8 3/4		<u>1130'</u> NO	
6 3/4			Depth set
5 3/16		<u>2185'</u> YES	
3			Perf. top
2			Perf. bottom
Liners Used			Perf. top
			Perf. bottom

CASING CEMENTED 5 1/2" SIZE No. Ft. _____ Date _____

COAL WAS ENCOUNTERED AT _____ FEET _____ INCHES
_____ FEET _____ INCHES FEET _____ INCHES
_____ FEET _____ INCHES FEET _____ INCHES

Formation	Color	Hard or Soft	Top	Bottom	Oil, Gas or Water	Depth	Remarks
SOIL			0	10		10	
SLATE			10	25		15	
LIME			25	60		35	
SHALE			60	150		90	
LIME			150	170		20	
RED ROCK			170	190		20	
LIME			190	210		20	
RED ROCK			210	230		20	
LIME			230	235		5	
SAND			235	275		40	
Red Rock			275	340		30	
SLATE			340	365		25	
RED ROCK			365	380		15	
SHALE			380	395		15	
RED ROCK			395	460		65	
GRAY SHALE			460	475		15	
SAND			475	550		75	



Formation	Color	Hard or Soft	Top	Bottom	Oil, Gas or Water	Depth Found	Remarks
SHALE			550	565		15	
LIME			565	630		65	
SLATE & SHELLS			630	635		5	
LIME			635	645		10	
SHALE			645	648		3	
LIME			648	650		2	
RED ROCK			650	690		40	
GRAY SHALE			690	765		80	
RED ROCK			765	825		60	
LIME			825	850		25	
RED ROCK			850	865		10	
SHALE			865	875		10	
RED ROCK			875	920		15	
PINK ROCK			920	945		25	
SLATE			945	965		20	
RED ROCK			965	975		10	
SANDY SHALE			975	1010		35	
LIME			1010	1040		30	
SANDY LIME			1040	1065		25	
SHALE			1065	1080		15	
RED ROCK			1080	1105		25	
SHALE			1105	1130		25	
BLACK LIME			1130	1150		20	
BLACK SHALE			1150	1180		30	
SLATE & SHELLS			1180	1235		55	
SAND			1235	1315		80	
GRAY SHALE			1315	1330		15	
BLACK SHALE			1330	1375		45	
SAND			1375	1395		20	
SHALE			1395	1455		60	
LIME			1455	1475		20	
SAND			1475	1540		65	
BLACK SHALE			1540	1625		85	
SAND			1625	1645		20	
SHALE			1645	1665		20	
LIME			1665	1703		38	
SAND			1703	1750		47	
SAND			1750	1800		50	
LIME			1800	1810		10	
SAND			1810	1890		80	
LIME			1890	1937		47	
LIME			1937	1956		19	
PENCIL CAVE			1956	1959		3	
BLUE MONDAY			1959	1984		25	1976 WATER
LIME			1984	2030		46	2028 to 2034
SAND			2030	2136		106	DIL & GAS
SHALE			2136	2185		49	

Date 2/3/, 1963
 APPROVED Jim O'Neil, Inc. Owner
 By Patricia J. O'Neil (Title)