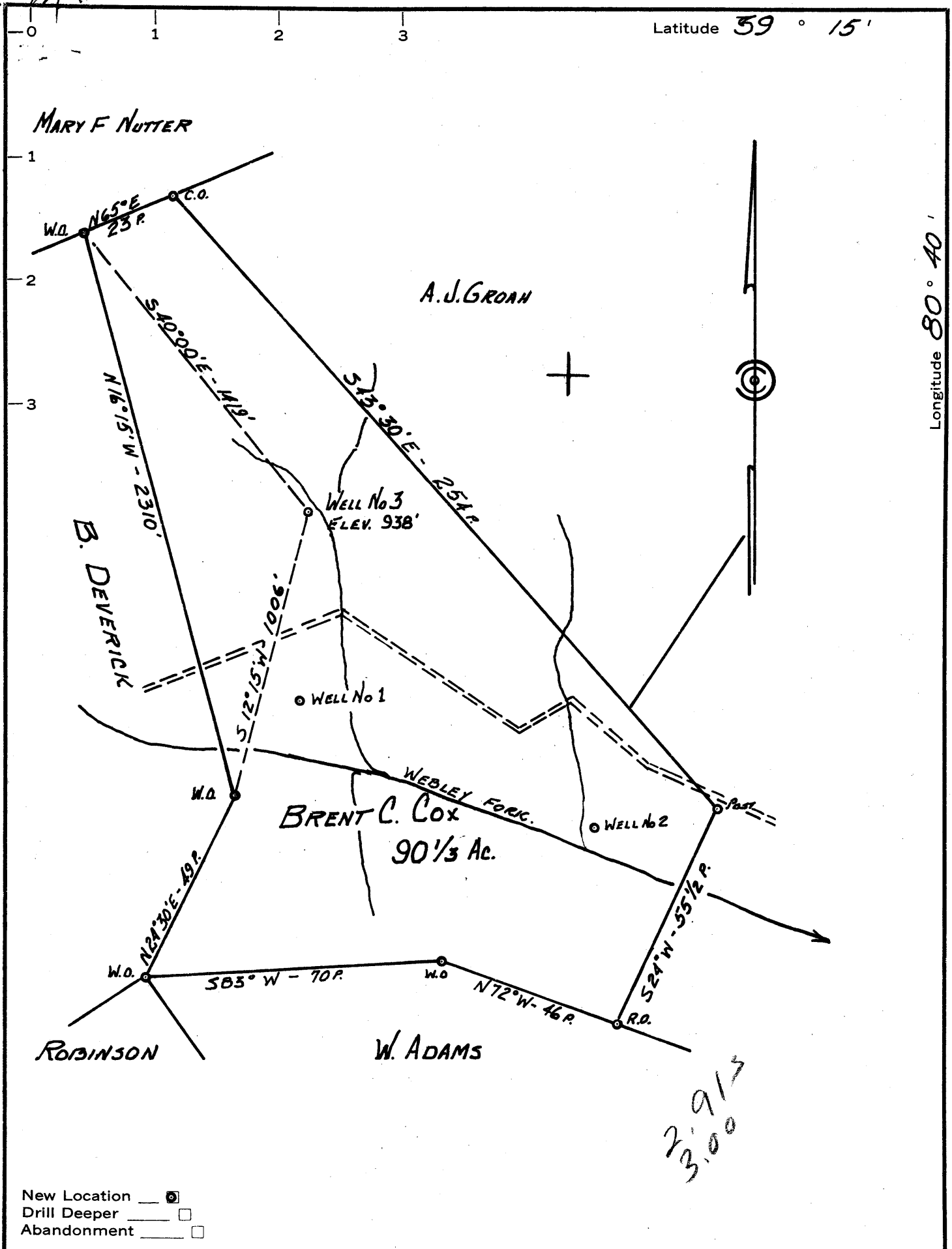


Latitude 39° 15'

Longitude 80° 40'



23.9/3
3.00

- New Location
- Drill Deeper
- Abandonment

Company TRIO OIL AND GAS Co.
 Address P.O. Box 264, West Union, W. Va.
 Farm BRENT C. COX (CHILDERS TRACT)
 Tract _____ Acres 90 1/3 Lease No. _____
 Well (Farm) No. 3 Serial No. _____
 Elevation (Spirit Level) 938'
 Quadrangle VADIS NW
 County DODDRIDGE District NEW MILTON
 Engineer John W. Hamilton
 Engineer's Registration No. 2274
 File No. _____ Drawing No. _____
 Date Nov. 13, 1961 Scale 1" = 30 FEET.

STATE OF WEST VIRGINIA
 DEPARTMENT OF MINES
 OIL AND GAS DIVISION
 CHARLESTON
WELL LOCATION MAP
 FILE NO. Dod-669

+ Denotes location of well on United States Topographic Maps, scale 1 to 62,500, latitude and longitude lines being represented by border lines as shown.

— Denotes one inch spaces on border line of original tracing.

6-6 134



STATE OF WEST VIRGINIA
DEPARTMENT OF MINES
OIL AND GAS DIVISION

Quadrangle vadis

Permit No. DOD669

WELL RECORD

Oil or Gas Well Combination
(KIND)

Company Trio Oil and Gas Co., Inc.
Address box 264, West Union, West Va.
Farm Brent C. Cox Acres 90 1/3
Location (waters) Webley Fork
Well No. 3 Elev. 938'
District New Milton County Doddridge
The surface of tract is owned in fee by B.C. Cox
Clarksburg, Address West Va.
Mineral rights are owned by same
Address _____

Drilling commenced 1/29/62
Drilling completed 2/18/62
Date Shot _____ From _____ To _____
With _____
Open Flow ~~1.22~~ 10ths Water in _____ Inch
1.22 /10ths Merc. in 2" Inch
Volume 778 mcf Cu. Ft.
Rock Pressure 780# lbs. 24 hrs.
Oil show bbls., 1st 24 hrs.
WELL ACIDIZED _____

WELL FRACTURED yes

RESULT AFTER TREATMENT 40 bbl oil 4,500mcf

ROCK PRESSURE AFTER TREATMENT 785#

Fresh Water 60' Feet Salt Water none Feet

Casing and Tubing	Used in Drilling	Left in Well	Packers
Size			Kind of Packer _____
16			
13			
10	320'	none	Size of _____
8 1/4	942	none	
6 3/4			Depth set _____
5 3/16	2012	all	
3			Perf. top _____
2			Perf. bottom _____
Liners Used			Perf. top _____
			Perf. bottom _____

CASING CEMENTED _____ SIZE _____ No. Ft. _____ Date _____
100 sks. cement, 6 sks. aquacel GARATON

COAL WAS ENCOUNTERED AT _____ FEET _____ INCHES
_____ FEET _____ INCHES FEET _____ INCHES
_____ FEET _____ INCHES FEET _____ INCHES

Formation	Color	Hard or Soft	Top	Bottom	Oil, Gas or Water	Depth	Remarks
red rock			0	55		55	
sand			55	120		65	
slate			120	170		50	
red rock			170	230		60	
slate			230	250		20	
red rock			250	300		50	
slate			300	330		30	
sand			330	385		55	
lime			385	445		60	
slate			445	485		40	
slate			485	655		170	
red rock lime			655	750		90	
red rock			750	810		60	
slate			810	865		55	
pink rock			865	880		15	
sand			880	900		20	
pink rock			900	925		25	
slate			925	940		15	
lime			940	970		30	
shale			970	1080		110	
sa nd			1080	1240		160	
slate			1240	1280		40	
sand			1280	1415		135	
sand slate			1415	1530		115	
sand			1530	1610		80	
slate			1610	1745		135	
lime			1745	1803		58	
blue munday			1803	1830		27	
lime			1830	1888		58	
sand			1888	1992		104	show oil oil & gas gas
slate			1992	(over) 2012		20	

