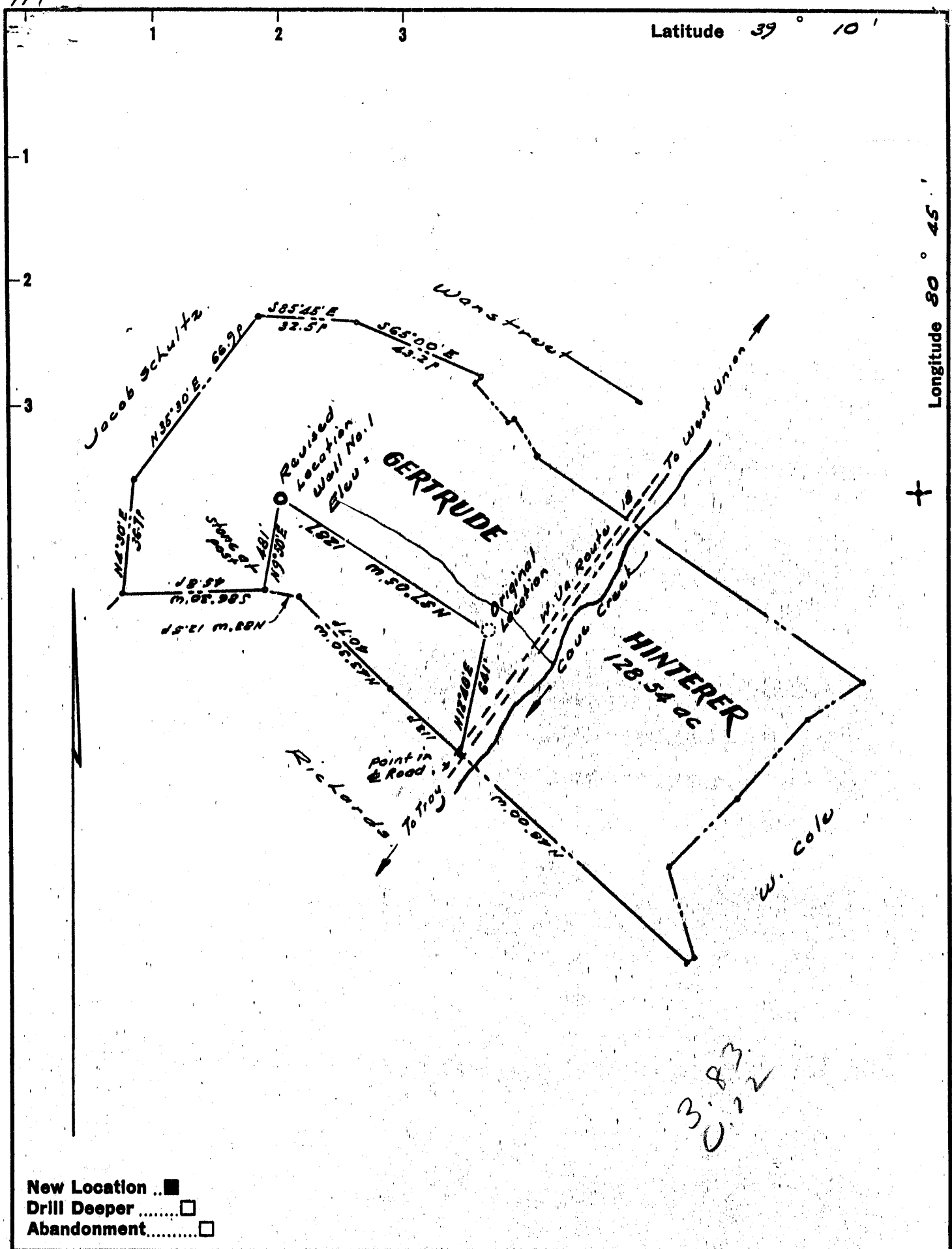


MM



Company SOUTHERN TRIANGLE OIL CO

Address Alum Bridge, West Va.

Farm Gertrude Hinterer

Tract _____ Acres 128.54 Lease No. _____

Well (Farm) No. One Serial No. _____

Elevation (Spirit Level) 1153' via 191772 OK-75 bpd

Quadrangle Holbrook FK

County Doddridge District Cove

Engineer W. Blount

Engineer's Registration No. 1227

File No. _____ Drawing No. _____

Date May 1962 Scale 1" = 40 p = 660'

STATE OF WEST VIRGINIA
 DEPARTMENT OF MINES
 OIL AND GAS DIVISION
 CHARLESTON

WELL LOCATION MAP

FILE NO. DDO-682-(Revised)

+ Denotes location of well on United States Topographic Maps, scale 1 to 62,500, latitude and longitude lines being represented by border lines as shown.

— Denotes one inch spaces on border line of original tracing.

6-0-1962



STATE OF WEST VIRGINIA
DEPARTMENT OF MINES
OIL AND GAS DIVISION 8

Quadrangle Vadis
Permit No. 682-R

WELL RECORD

Oil or Gas Well Both
(KIND)

Company Southern Triangle Oil Company
Address 104 Bank street
Farm Gertrude Hinterer Acres 128
Location (waters) Cove creek ^{des. 1153-revised} Size
Well No. 1 Elev. 1006
District Cove County Doddridge
The surface of tract is owned in fee by Gertrude Hinterer Address Leopold, W. Va.
Mineral rights are owned by Gertrude Hinterer Address Leopold, W. Va.
Drilling commenced 6-15-62
Drilling completed 6-23-62
Date Shot From To
With
Open Flow /10ths Water in Inch
/10ths Merc. in Inch
Volume 200 M Cu. Ft.
Rock Pressure 650 lbs. 24 hrs.
Oil 20 bbls., 1st 24 hrs.
WELL ACIDIZED

Casing and Tubing	Used in Drilling	Left in Well	Packers
16			Kind of Packer
13			Perf. <u>2114</u>
10			Perf. <u>2115</u>
8 5/8	46 ft.	46	Perf. <u>2223</u>
6 3/4			Perf. <u>2224</u>
4 1/2		2689	Perf. top <u>2413</u>
3			Perf. bottom <u>2414</u>
2			Perf. top <u>2628</u>
			Perf. bottom <u>2629</u>

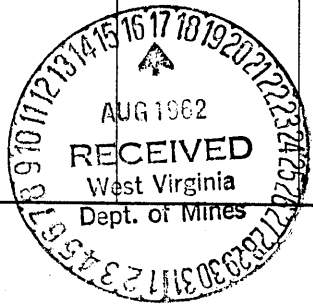
CASING CEMENTED 4 1/2 SIZE 2689 No. Ft. 6-23-62 Date
225 sacks of Hi-Early Cement

COAL WAS ENCOUNTERED AT none FEET none INCHES
FEET INCHES FEET INCHES
FEET INCHES FEET INCHES

WELL FRACTURED yes, by Dowell - 600 bbls. of water & 30,000 lbs. of sand on each; Gordon Berea, Weir and Injun
RESULT AFTER TREATMENT 200 M cu. ft. per day 20 bbls. of oil 1st 24 hrs.
ROCK PRESSURE AFTER TREATMENT 650 lbs. 24hrs.
Fresh Water none Feet Salt Water none Feet

Formation	Color	Hard or Soft	Top	Bottom	Oil, Gas or Water	Depth	Remarks
Soil	yellow	soft	0	15			
Shale	grey	"	15	40			
Shly. sand	"	"	40	89			
Sand	"	"	89	184			
Shale	"	"	184	275			
Shly. Sand	"	"	275	409			
sand & shale	"	"	409	481			
Shale	"	"	481	565			
Sand	White	Hard	565	604			
Shale	grey	Soft	604	693			
shly. sand	"	"	693	775			
shale	green	"	775	859			
sand - shale	grey	"	859	940			
shale	red	"	940	965			
sand-shale	grey	"	965	1214			
sand	white	Hard	1214	1234			
sand-shale	grey	soft	1234	1349			
shly. sand	grey	hard	1349	1440			
sand	white	"	1440	1477			
shale	grey	soft	1477	1558			
sand	grey	hard	1558	1620			
sandy shale	grey	soft	1620	1749			
sand	white	hard	1749	1788			
shale	grey	soft	1788	1902			
sand	brown	hard	1902	1912			
shale	grey	soft	1912	1937			
little lime	brown	hard	1937	1956			
shale & sand	green	soft	1950	1978			
big lime	brown	hard	1978	2036			

1st salt sand



Formation	Color	Hard or Soft	Top <i>f</i>	Bottom	Oil, Gas or Water	Depth Found	Remarks
sandy lime	grey	hard	2036	2053			
limey sand	white	hard	2053	2076			
lime	grey	hard	2076	2101			
dolomitic sand	tan	soft	2101	2124	gas & oil	2101-17	
shale	green	soft	2124	2209			
shly sand	grey	hard	2209	2315	gas & oil	2218-26	
shale	grey	soft	2315	2410			
sand	white	hard	2410	2417	gas & oil	2410-17	Berea
shale	green	soft	2417	2618			
sand	grey	hard	2618	2630			
shale	green	soft	2630	2689	gas & oil	2618-30	Gordon
Total Depth		2689					

Date 8 - 14, 1962

APPROVED Southern Triangle oil Co., Owner

By James E. Capin, geologist
(Title)