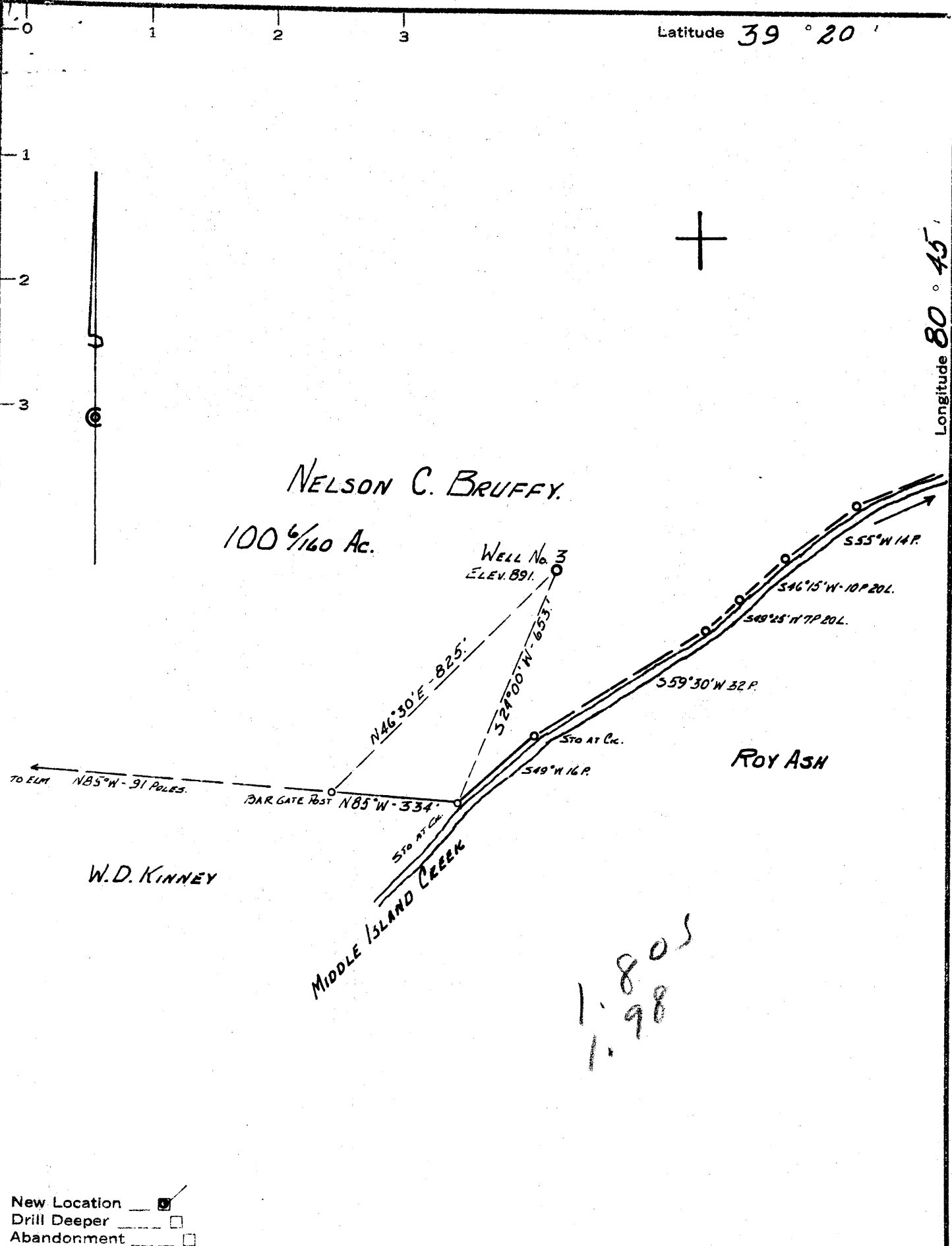


Latitude 39 ° 20 '

Longitude 80 ° 45 '



New Location
 Drill Deeper
 Abandonment

Company FORD & BRUFFY
 Address 1/10 W.A. FORD, WEST UNION, W. VA.
 Farm NELSON C. BRUFFY
 Tract _____ Acres 100 1/160 Lease No. _____
 Well Farm) No. 3 Serial No. _____
 Elevation (Spirit Level) 891.'
 Quadrangle WEST UNION SE
 County DODDRIDGE District WEST UNION
 Engineer John W. Hamilton
 Engineer's Registration No. 2274
 File No. _____ Drawing No. _____
 Date JAN 10, 1962 Scale 1" = 20 POLES

STATE OF WEST VIRGINIA
 DEPARTMENT OF MINES
 OIL AND GAS DIVISION
 CHARLESTON

WELL LOCATION MAP
 FILE NO. Dod-701

+ Denotes location of well on United States Topographic Maps, scale 1 to 62,500, latitude and longitude lines being represented by border lines as shown.
 — Denotes one inch spaces on border line of original tracing.



STATE OF WEST VIRGINIA
DEPARTMENT OF MINES
OIL AND GAS DIVISION

Quadrangle WEST UNION

Permit No. DOD-701

WELL RECORD

Oil or Gas Well BRY

(KIND)

Company FORD & BRUFFY
Address WEST UNION, W. VA.
Farm BRUFFY Acres 100 6/160
Location (waters) MIDDLE ISLAND CREEK
Well No. 3 Elev. 391.1
District WEST UNION County BOBBRIDGE
The surface of tract is owned in fee by NELSON BRUFFY Address WEST UNION W. VA.
Mineral rights are owned by J.M.L. SMITH Address WEST UNION
& CLAUDIA PENNY Address WEST UNION
Drilling commenced JANUARY 1962
Drilling completed FEBRUARY 15, 1962
Date Shot From To
With
Open Flow /10ths Water in Inch
/10ths Merc. in Inch
Volume Cu. Ft.
Rock Pressure lbs. hrs.
Oil bbls., 1st 24 hrs.
WELL ACIDIZED YES
NO RESULTS
WELL FRACTURED YES
NO RESULTS

| Casing and Tubing | Used in Drilling | Left in Well | Packers |
|-------------------|------------------|--------------|----------------|
| Size | | | Kind of Packer |
| 16 | | | |
| 13 | | | |
| 10 | | | Size of |
| 8 1/4 | <u>458</u> | | |
| 6 3/4 | <u>1054</u> | | Depth set |
| 5 3/16 | <u>1953</u> | | |
| 3 | | | Perf. top |
| 2 | | | Perf. bottom |
| Liners Used | | | Perf. top |
| | | | Perf. bottom |

CASING CEMENTED SIZE 5-1/2 No. Ft. Date

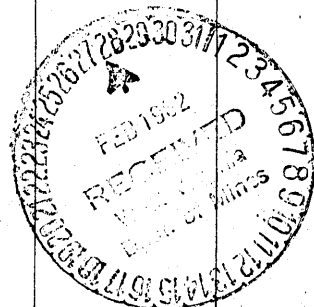
COAL WAS ENCOUNTERED AT FEET INCHES
FEET INCHES FEET INCHES
FEET INCHES FEET INCHES

RESULT AFTER TREATMENT

ROCK PRESSURE AFTER TREATMENT

Fresh Water Feet Salt Water Feet

| Formation | Color | Hard or Soft | Top | Bottom | Oil, Gas or Water | Depth | Remarks |
|----------------|--------------|--------------|-----|--------|-------------------|------------|---------------------|
| TOP SOIL | | | 0 | 15 | | | |
| SLATE | | | 15 | 18 | | | |
| RED ROCK | | | 18 | 28 | | | |
| SLATE | | | 28 | 75 | | | |
| SHALE | | | 75 | 123 | | | |
| SAND | | | 123 | 140 | | | |
| RED ROCK | | | 140 | 183 | | | |
| LIME | | | 183 | 194 | | | |
| SLATE | | | 194 | 200 | | | |
| RED ROCK | | | 200 | 211 | | | |
| SLATE | | | 211 | 249 | | | |
| RED ROCK | | | 249 | 265 | | | |
| SHALE | | | 265 | 280 | | | |
| RED ROCK | | | 280 | 293 | | | |
| LIME | | | 293 | 305 | | | |
| SLATE | | | 305 | 320 | | | |
| SHALE | <u>BLACK</u> | | 320 | 333 | | | |
| RED ROCK | | | 333 | 340 | | | |
| SLATE & SHELLS | | | 340 | 345 | | | |
| LIME | | | 345 | 360 | | | |
| RED ROCK | | | 360 | 374 | | | |
| SLATE | | | 374 | 381 | | | |
| RED ROCK | | | 381 | 385 | | | |
| LIME | | | 385 | 401 | | | |
| RED ROCK | | | 401 | 440 | | | |
| SHALE | | | 440 | 443 | | | |
| RED ROCK | | | 443 | 445 | | | |
| SHALE | | | 445 | 525 | <u>WATER</u> | <u>502</u> | <u>1 BBL PER HR</u> |
| RED ROCK | | | 525 | 530 | | | |
| SLATE | | | 530 | 575 | | | |



| Formation | Color | Hard or Soft | Top | Bottom | Oil, Gas or Water | Depth Found | Remarks |
|----------------|-------|--------------|------|--------|-------------------|-------------|-------------|
| LIME | | | 575 | 598 | | | |
| SLATE | | | 598 | 613 | | | |
| SHALE | | | 613 | 646 | | | |
| RED ROCK | | | 646* | 651 | | | |
| SLATE | | | 651 | 706 | | | |
| SHALE | | | 706 | 730 | | | |
| RED ROCK | | | 730 | 775 | | | |
| SHALE | | | 775 | 792 | | | |
| RED ROCK | | | 792 | 820 | | | |
| SHALE | | | 820 | 840 | | | |
| RED ROCK | | | 840 | 848 | | | |
| SHALE | | | 848 | 909 | | | |
| RED ROCK | | | 909 | 932 | | | |
| SHALE | | | 932 | 987 | | | |
| SLATE | | | 987 | 994 | | | |
| RED ROCK | | | 994 | 1003 | | | |
| SHALE | | | 1003 | 1032 | | | |
| SLATE | | | 1032 | 1043 | | | |
| SAND | | | 1043 | 1060 | | | |
| SHALE | | | 1060 | 1082 | | | |
| SLATE | | | 1082 | 1126 | | | |
| SHALE | | | 1126 | 1184 | | | |
| SAND | | | 1184 | 1209 | | | |
| LIME SHELLS | | | 1209 | 1237 | | | |
| SAND | | | 1237 | 1282 | | | |
| SLATE SHELLS | | | 1282 | 1395 | | | |
| SLATE & SAND | | | 1395 | 1456 | | | |
| SHALE | | | 1456 | 1532 | | | |
| LIME | | | 1532 | 1550 | | | |
| SLATE | | | 1550 | 1612 | | | |
| SAND | | | 1612 | 1670 | | | |
| SAND | | BROKEN | 1670 | 1785 | | | |
| LIME | | | 1785 | 1800 | | | |
| LIME | | | 1800 | 1839 | | | |
| SAND | | | 1839 | 1845 | | | |
| SLATE | | | 1845 | 1850 | | | BLUE MUNDAY |
| LIME | BLACK | | 1850 | 1860 | | | |
| BIG LIME | | | 1860 | 1913 | | | |
| KEENER SAND | | | 1913 | 1942 | | | |
| BIG INJUN SAND | | | 1942 | 2008 | | | |
| SAND BRAKE | | | 2008 | 2040 | OIL | 1953-65 | SHOWN |
| SLATE | | | 2040 | | | | TOTAL DEPTH |

Date FEBRUARY, 1962

APPROVED _____, Owner

By _____ (Title)