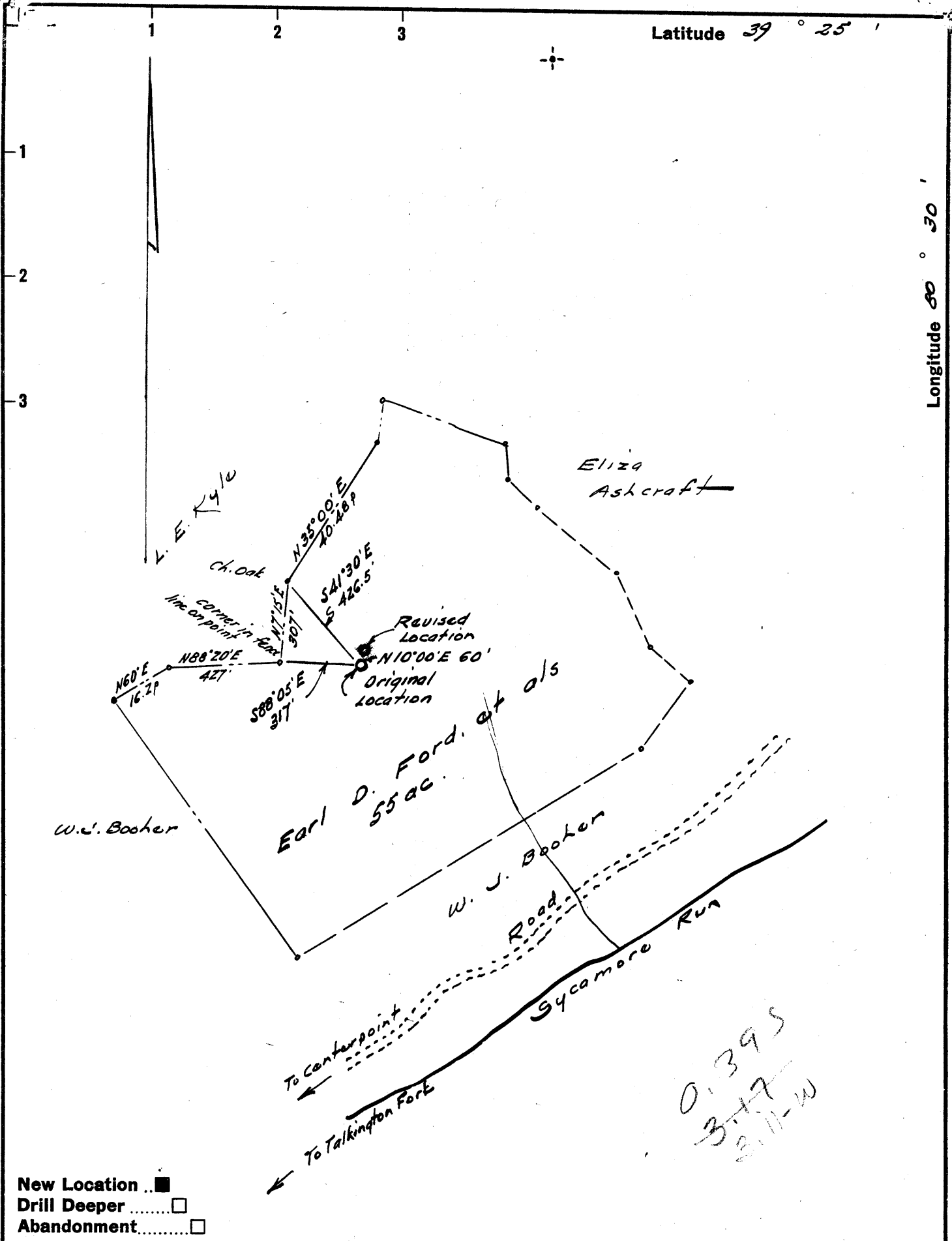


Latitude 39° 25'

Longitude 80° 30'



New Location ..
 Drill Deeper
 Abandonment.....

Company B. E. TALKINGTON
 Address Professional Bldg. Clarksburg, W. Va.
 Farm Earl D. Ford, et als.
 Tract _____ Acres 55.0 Lease No. _____
 Well (Farm) No. One Serial No. _____
 Elevation (Spirit Level) 1220
 Quadrangle Centerpoint EC
 County Doddridge District McClellan
 Engineer W. H. Haefer
 Engineer's Registration No. 1227
 File No. _____ Drawing No. _____
 Date May 1962 Scale 1" = 300' = 495'

STATE OF WEST VIRGINIA
 DEPARTMENT OF MINES
 OIL AND GAS DIVISION
 CHARLESTON

WELL LOCATION MAP
 FILE NO. Dod-713 (Revised)
plugged 7/28/1962
 + Denotes location of well on United States Topographic Maps, scale 1 to 62,500, latitude and longitude lines being represented by border lines as shown.
 - Denotes one inch spaces on border line of original tracing.



STATE OF WEST VIRGINIA
DEPARTMENT OF MINES
OIL AND GAS DIVISION /

Quadrangle Centerpoint

WELL RECORD

Permit No. DOD 713

DRY
--- Oil or Gas Well ---
(KIND)

Company B. E. TALKINGTON
Address PO. BOX. 864. CLARKSBURG. W. VA
Farm EARL. D. FORD, ET ALS Acres 55
Location (waters) SCYCI MORE
Well No. 1 Elev. 1227
District MCCLEELAN County DODDRIDGE
The surface of tract is owned in fee by EARL. D. FORD ETALS
CENTERPOINT Address W. VA
Mineral rights are owned by EARL. D. FORD ETALS
CENTERPOINT Address W. VA
Drilling commenced APRIL 1 1962
Drilling completed AUG 1 1962
Date Shot no From _____ To _____
With _____
Open Flow 2 /10ths Water in 1 Inch
_____/10ths Merc. in _____ Inch
Volume 14000 Cu. Ft.
Rock Pressure 100 lbs. 48 hrs.
Oil no bbls., 1st 24 hrs.
WELL ACIDIZED _____

Casing and Tubing	Used in Drilling	Left in Well	Packers
Size 16	10ft	10ft	
16			Kind of Packer _____
13			Size of _____
10	418ft	none	Depth set <u>2172</u>
8 1/4	1538.6	none	
6 5/8	2172 ft	2172	
5 3/16			
3			Perf. top <u>2142</u>
2			Perf. bottom <u>2157</u>
Liners Used			Perf. top <u>2142</u>
			Perf. bottom <u>2157</u>

CASING CEMENTED YES SIZE 7od No. Ft. 2172.6. 20
APX 400ft 1772 -40 sks. cement,
10 aquagel- GARATON
COAL WAS ENCOUNTERED AT _____ FEET _____ INCHES
none FEET _____ INCHES FEET _____ INCHES
_____ FEET _____ INCHES FEET _____ INCHES

WELL FRACTURED YES WITH 400bbl & 8000 lbs SAND
RESULT AFTER TREATMENT 4/10 WATER 3/8 inch
ROCK PRESSURE AFTER TREATMENT 100 lbs 48 hrs
Fresh Water YES LITTLE NOT ENOUGH TO DRILL WITH Salt Water YES AT 1500 lb water hrs

Formation	Color	Hard or Soft	Top	Bottom	Oil, Gas or Water	Depth	Remarks
RED CLAY			0	10			
ROCK			10	34			
RED ROCK			34	41			
LIME & SLATE			41	69			
RED ROCK			69	95	LITTLE WATER	95	105
SAND			95	105			
RED ROCK			105	150			
SLATE			150	180			
LIME			180	195	LITTLE	195	205
SAND			195	201			
SLATE BLACK			201	219			
LIME BLACK			219	239			
SLATE & SHELLS			239	250			
RED ROCK & LIME			250	265			
SLATE & SHELLS			265	303			
LIME			303	318			
RED ROCK			318	320			
LIME			320	342			
SLATE & SHELLS			342	385			
RED ROCK			385	402			
LIME			402	421	10inch set at	418	
1th PITTSBURG SAND			421	451			
SLATE			451	461			
LIME			461	541			
SLATE			541	544			
LIME			544	595			
SLATE & SHELLS			595	638			
LIME			638	697			
SLATE & SHELLS			697	740			
LIME			740	765			

(over)



Formation	Color	Hard or Soft	Top /	Bottom	Oil, Gas or Water	Depth Found	Remarks
SLATE			765	770			
2th PITTSBURG SAND			770	790			
LIME			790	823			
SAND LITTLE DUNKARD			823	843			
SLATE & SHELLS			843	854			
LIME & SLATE			854	875			
RED ROCK			875	880			
SLATE & SHELLS			880	897			
SAND			997	915			
RED ROCK & SHELLS			915	937			
LIME			937	961			
RED ROCK			961	977			
SLATE & SHELLS			977	1015			
RED ROCK			1015	1036			
LIME			1036	1052			
RED ROCK			1052	1072			
LIME			1072	1101			
SAND BIG DUNKARD			1101	1177			
LIME GRAY			1177	1197			
SLATE & SHELLS			1197	1210			
SLATE BLACK			1210	1220			
LIME			1220	1250			
SLATE & SHELLS			1250	1287			
LIME			1287	1348			
LIME & SLATE			1348	1365			
LIME			1365	1477			
1th SALT SAND			1477	1508	WATER AT	1500	1 BAILER 2hrs
LIME			1508	1528			
2th SALT SAND			1528	1550			
SLATE			1550	1568			
SAND PEKER			1568	1603			
SLATE & SHELLS			1603	1649			
3th SALT SAND			1649	1668			
SLATE & SHELLS			1668	1695			
LIME			1695	1743			
SLATE & SHELLS			1743	1760			
MAXON SAND			1760	1793			
SLATE			1793	1795			
LIME			1795	1809			
SLATE & SHELLS			1809	1830			
SAND			1830	1860			
SLATE & SHELLS			1860	1900			
RED ROCK & SHELLS			1900	1928			
RED LIME			1928	1965			
LITTLE LIME			1965	1980			
PENCIL CAVE			1980	2002			
BIG LIME			2002	2090			
INJUN SAND			2090	2105			
LIME			2105	2126			
INJUN SAND			2126	2165	SMELL OIL	AT 2158-	2165 & GAS
SLATE & SHELLS			2165	2220			
LIME			2220	2235			
SLATE			2235	2240			
LIME			2240	2326			
SAND			2326	2338			
LIME			2338	2512			
SAND SHELL			2512	2520			
LIME			2520	2535			
SAND			2535	2555			
LIME			2555	2667	SMELL GAS NOT ENOUGH TO TEST		
SAND STRAY			2667	2747			
LIME			2747	2760			
SAND 4 th			2760	2770			
SLATE & SHELLS			2770	2772	JUST A SHELL		
SAND 5 th NOT ACCOUNTABLE			2772	2778	PLUG BACK FROM WITH RED CLAY & CEMENT	2778	2163
SLATE & SHELLS			2778				
TD							

Date 8-17, 1922
APPROVED B. C. Halkington, Owner
By H. A. Rinkhart (Title)