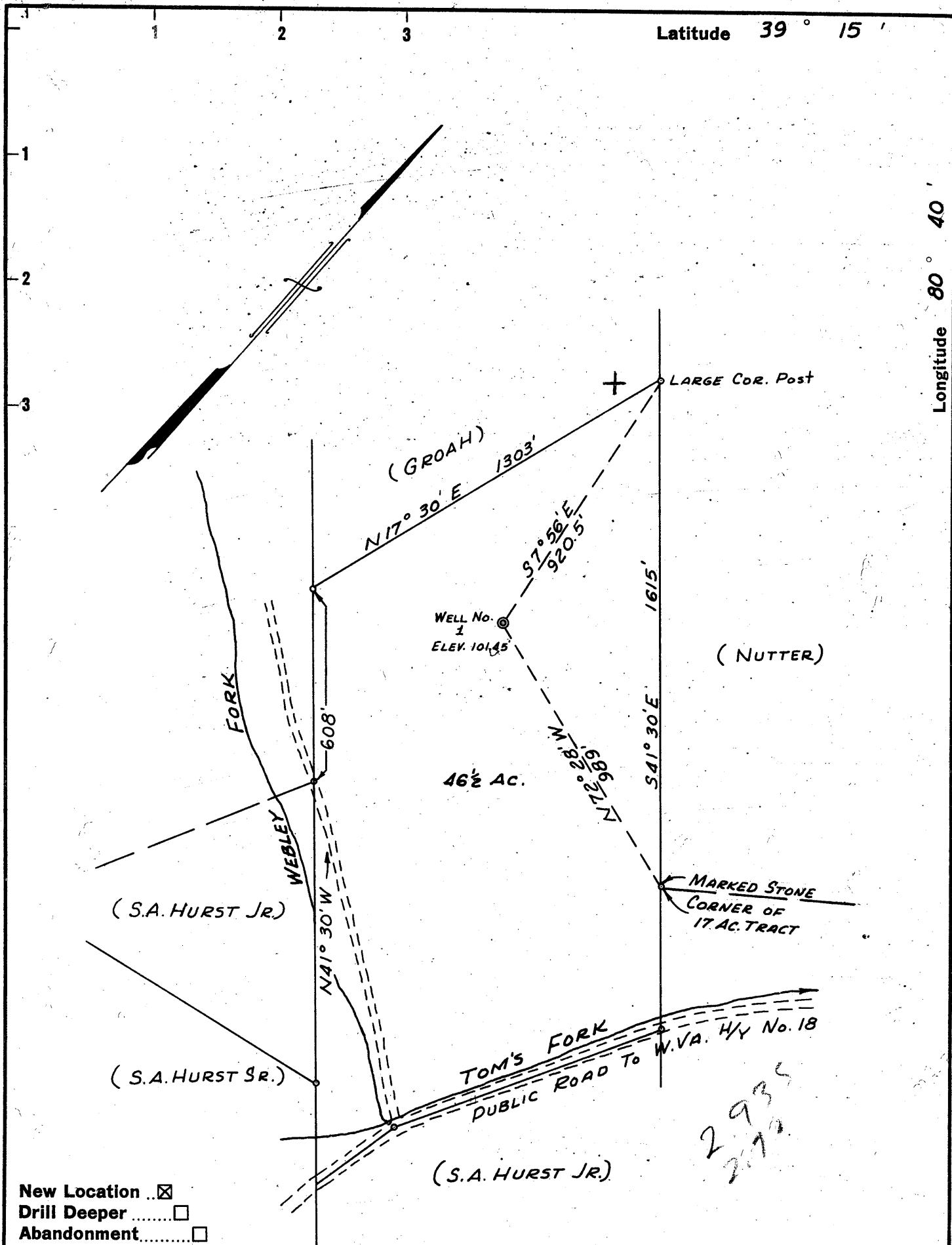


MM



Company DEVONIAN OIL & GAS CO.
 2003 COMMONWEALTH BLDG.
 Address PITTSBURGH 22, PA.

Farm S. A. HURST JR.

Tract 46 1/2 Acres 211 Lease No. _____

Well (Farm) No. 1 Serial No. _____

Elevation (Spirit Level) 101.45'

Quadrangle VADIS NW

County DODDRIDGE District NEW MILTON

Engineer Wm. H. Wilmoth

Engineer's Registration No. 3935

File No. _____ Drawing No. _____

Date FEB. 2, 1962 Scale 1" = 400'

STATE OF WEST VIRGINIA
 DEPARTMENT OF MINES
 OIL AND GAS DIVISION
 CHARLESTON

WELL LOCATION MAP
 FILE NO. DOD-714

+ Denotes location of well on United States Topographic Maps, scale 1 to 62,500, latitude and longitude lines being represented by border lines as shown.

- Denotes one inch spaces on border line of original tracing.



STATE OF WEST VIRGINIA
DEPARTMENT OF MINES
OIL AND GAS DIVISION

Quadrangle Vadis

Permit No. Dod-714

WELL RECORD

Oil or Gas Well Both
(KIND)

Company Devonian Gas & Oil Company
Address 1112 Benedum Trees Bldg., Pgh. 22, Pa.
Farm Stokes Hurst, Jr. Acres 211
Location (waters) Tom's Fork
Well No. 1 Elev. 1014.50'
District New Milton County Doddridge
The surface of tract is owned in fee by Stokes Hurst, Jr. et ux., 102 Beech St., West Union, W. Va.
Mineral rights are owned by Stokes Hurst, Jr., 102 Beech St., West Union & J. C. Dicks et ux., Petroleum Address West Virginia
Drilling commenced February 16, 1962
Drilling completed February 28, 1962
Date ~~started~~ Perforated 2-28-62 From 2017' and 2037' To 4'
With 4-1/2" jets and 8-1/2" jets respectively
Open Flow /10ths Water in _____ Inch
/10ths Merc. in _____ Inch
Volume estimated (300,000) Cu. Ft.
Rock Pressure approx. 450 lbs. 12 hrs.
Oil approx. 60 bbls., 1st 24 hrs.
WELL ACIDIZED Mud acid approx. 300 gal.

Casing and Tubing	Used in Drilling	Left in Well	Packers
Size			Kind of Packer
16			
13			
9 5/8"	32'	32'	Size of
8 3/4			
6 5/8			Depth set
5 3/16			
5 1/2"		2065'	Perf. top
2		2010'	Perf. bottom
Liners Used			Perf. top
			Perf. bottom

CASING CEMENTED 5 1/2" SIZE 2065 No. Ft. 2-24-62 Date
60 sks. cement - Dowell

COAL WAS ENCOUNTERED AT _____ FEET _____ INCHES
_____ FEET _____ INCHES _____ FEET _____ INCHES
_____ FEET _____ INCHES _____ FEET _____ INCHES

WELL FRACTURED approx. 900 bbl. and approx. 34,000# 20-40 sand

RESULT AFTER TREATMENT flowing 70 bbl. of oil through 2" tubing choke valve 1/16" opening

ROCK PRESSURE AFTER TREATMENT approx. 450 lbs.

Fresh Water _____ Feet Salt Water _____ Feet

Formation	Color	Hard or Soft	Top	Bottom	Oil, Gas or Water	Depth	Remarks
Top soil	Red	Soft	0	5			This well drilled using mud-filled hob Depth of salt and fresh water cannot be determined when drilling with rotary.
Lime Stone	Gray	Hard	5	85			
Shale & Shells	Blue	Med. Soft	85	153			
Red Rock	Red	Soft	153	173			
Slate	Gray	Soft	173	253			
Red Rock	Red	Soft	253	283			
Sand	Brown	Soft	283	318			
Slate & Shells	Gray & White	Soft	318	453			
Sand	Brown	Soft	453	523			
Slate	Gray	Soft	523	753			
Sand	Brown	Soft	753	873			
Slate	Gray	Soft	873	1,128			
Sand	Brown	Soft	1,128	1,263			
Slate	Gray	Soft	1,263	1,328			
Sand	Brown	Soft	1,328	1,463			
Slate & Shells	Gray	Hard	1,463	1,568			
Sand & Slate	Brown & Gray	Hard	1,568	1,783			
Slate w/streaks of sand	Gray	Hard	1,783	1,851			
Sand	Brown	Hard	1,851	1,875			
Slate	Gray	Hard	1,875	1,888			
Lime	White & Gray	Hard	1,888	1,949			
Injun Sand	Brown	Hard	1,949	2,029	Oil & Gas		
Slate	Gray	Hard	2,024	2,065			

(over)

