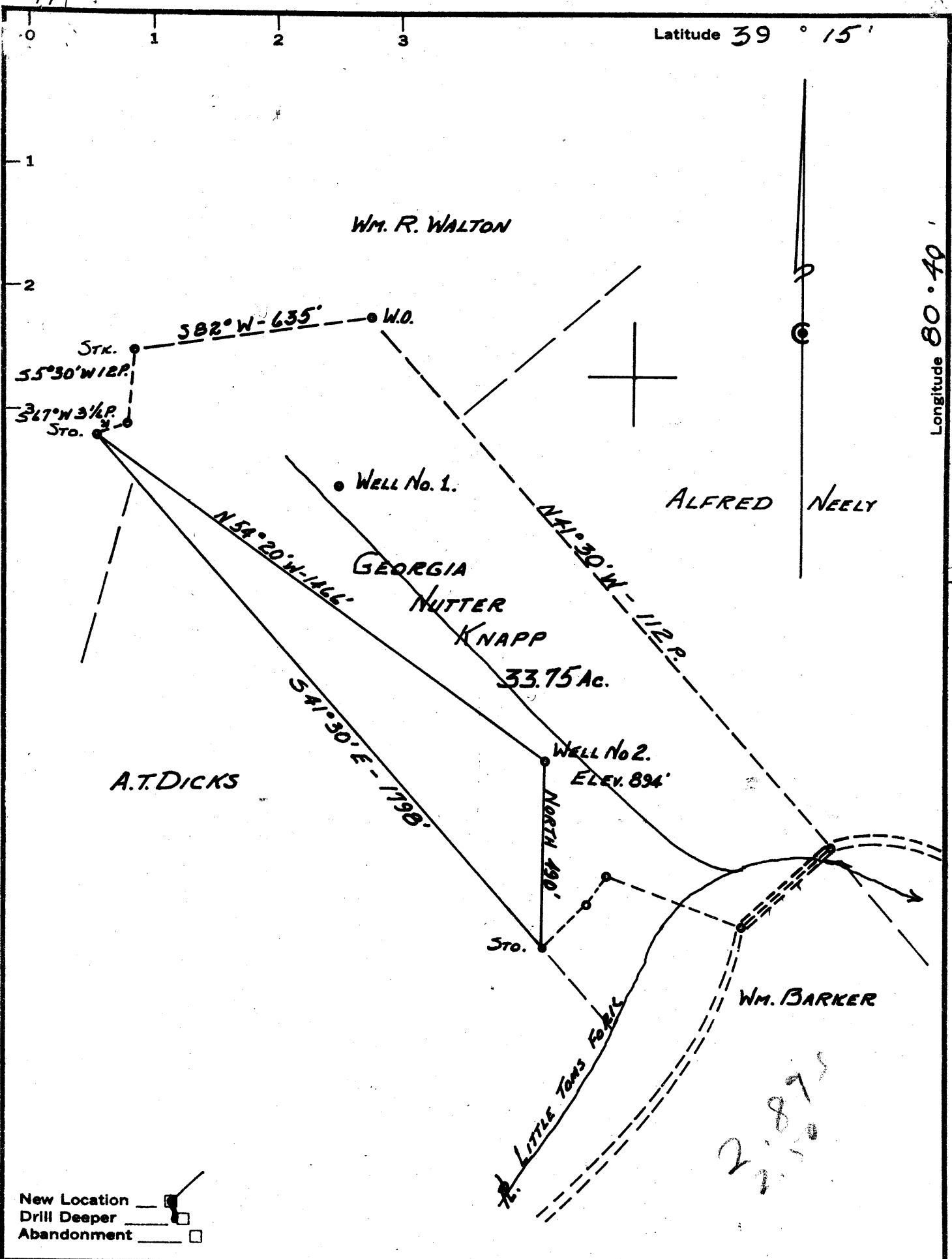


Latitude 39 ° 15'

Longitude 80 ° 40'



New Location
 Drill Deeper
 Abandonment

Company KNAPP OIL & GAS Co.
 Address 1/6 W.H. MOSSOR HARRISVILLE, W.VA.
 Farm GEORGIA NUTTER KNAPP
 Tract _____ Acres 33.75 Lease No. _____
 Well (Farm) No. 2 Serial No. _____
 Elevation (Spirit Level) 894'
 Quadrangle VADIS NW
 County DODDRIDGE District NEW MILTON
 Engineer John W. Hamilton
 Engineer's Registration No. 2274
 File No. _____ Drawing No. _____
 Date MARCH 3, 1962 Scale 1" = 20 POLES

STATE OF WEST VIRGINIA
 DEPARTMENT OF MINES
 OIL AND GAS DIVISION
 CHARLESTON

WELL LOCATION MAP
 FILE NO. DOD-740

+ Denotes location of well on United States Topographic Maps, scale 1 to 62,500, latitude and longitude lines being represented by border lines as shown.

- Denotes one inch spaces on border line of original tracing.



STATE OF WEST VIRGINIA
DEPARTMENT OF MINES
OIL AND GAS DIVISION 3

Quadrangle Vadis

Permit No. DOD-740

WELL RECORD

Oil or Gas Well Both

Company Georgia Knapp Oil and Gas Co. # 2
Address Box 204, Harrisville, W.Va.
Farm Georgia Knapp Acres 33
Location (waters) Toms Fork of Middle Island
Well No. two (2) Elev. 894
District New Milton County Doddridge
The surface of tract is owned in fee by Georgia Knapp
Address Clarksburg, W.Va.
Mineral rights are owned by Georgia Knapp
Address Clarksburg, W.Va.
Drilling commenced April 30, 1962
Drilling completed May 28, 1962
Date Shot From To
With
Open Flow 4.5/10ths Water in 1 Inch
 /10ths Merc. in Inch
Volume 70,000 Cu. Ft.
Rock Pressure 300 lbs. 24 hrs.
Oil 10 bbls., 1st 24 hrs.
WELL ACIDIZED

Casing and Tubing	Used in Drilling	Left in Well	Packers
Size			Kind of Packer
16		20	
13			
10	276		Size of
8 1/4	991		
6 1/4			Depth set
5 3/16			
3 1/2		2050	Perf. top
2			Perf. bottom
Liners Used			Perf. top
			Perf. bottom

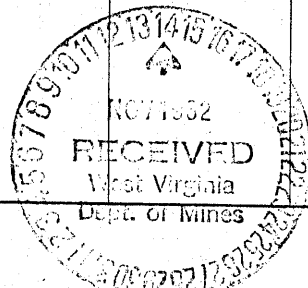
CASING CEMENTED SIZE No. Ft. Date
Copy cementing report enclosed
125 sks. cement-5 sks. aquagel- Lawson
COAL WAS ENCOUNTERED AT FEET INCHES
FEET INCHES FEET INCHES
FEET INCHES FEET INCHES

WELL FRACTURED 6-1-62
Copy fracture report enclosed

RESULT AFTER TREATMENT 2.5/10 water in 2" 200,000 ~~cu~~ cu ft 70 bbl oil per day
ROCK PRESSURE AFTER TREATMENT 370 24 hrs
Fresh Water Feet Salt Water Feet

Formation	Color	Hard or Soft	Top	Bottom	Oil, Gas or Water	Depth	Remarks
Top soil			0	8			
Yellow sand			8	22			
Lime			22	45			
Red rock			45	50			
Slate & shells			50	60			
Red rock			60	110			
Gritty lime			110	138			
Red rock			138	210			
Dark slate			210	215			
Slate & shells			215	248			
Red rock			248	274			
Slate & shells			274	300			
Red rock			300	346			
Sand			346	385			
Slate & shells			385	415			
Sand			415	425			
Slate .a			425	482			
Lime			482	500			
Slate & shells			500	514			
Lime			514	534			
Grey slate			534	635			
Red rock			635	670			
Sand			670	690			
Red rock			690	710			
Slate & shells			710	720			
Sand			720	740			
Red rock			740	780			
Lime			780	795			
Red rock			795	810			

(over)



Formation	Color	Hard or Soft	Top ³	Bottom	Oil, Gas or Water	Depth Found	Remarks
Slate & shells			810	860			
Lime			860	870			
Red rock			870	915			
Slate			915	938			
Red rock			938	955			
Lime			955	960			
Red rock			960	970			
Slate & shells			970	1025			
Black slate			1025	1050			
Slate & shells			1050	1067			
Sand			1067	1085			
Slate			1085	1125			
Slate & shells			1125	1150			
Grey slate			1150	1160			
Sand			1160	1200			
Slate			1200	1260			
Sand			1260	1286			
Slate			1286	1318			
Sand			1318	1326			
Slate			1326	1345			
Sand			1345	1435			
Slate			1435	1545			
Lime			1545	1555			
Slate			1555	1570			
Lime			1570	1590			
Sand			1590	1640			
Slate			1640	1685			
Slate & shells			1685	1780			
Brown slate			1780	1810			
Grey slate			1810	1822			
Little lime			1822	1845			
Slate, soft			1845	1861			
Sand			1861	1878			
Big lime			1878	1945			
Injun sand			1945	2020			
Slate 2'			2020	2050			
			Total Depth 2050				

Date November 12, 1962

APPROVED W. H. Mossor, Owner

By W. H. Mossor
(Title)