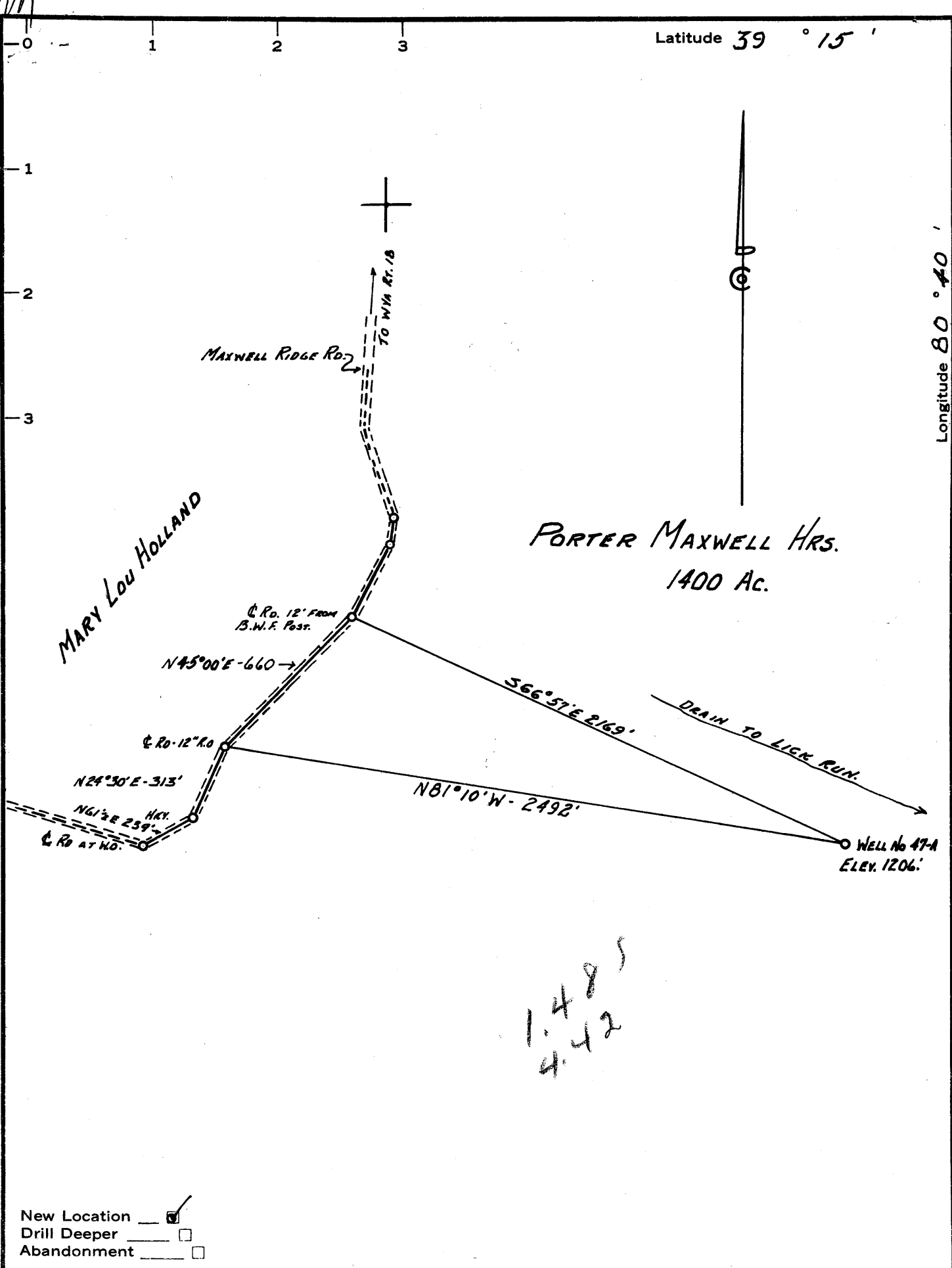


Latitude 39 ° 15 '

Longitude 80 ° 40 '



1.485  
4.42

New Location   
 Drill Deeper   
 Abandonment

Company MURPHY OIL CO OF PENNA.  
 Address 304 COURT ST. WEST UNION. W. VA.  
 Farm PORTER MAXWELL HRS.  
 Tract \_\_\_\_\_ Acres 1400 Lease No. \_\_\_\_\_  
 Well (Farm) No. 47-A Serial No. \_\_\_\_\_  
 Elevation (Spirit Level) 1206  
 Quadrangle VADIS NW  
 County DODDRIDGE District NEW MILTON  
 Engineer John W. Hamilton  
 Engineer's Registration No. 2274  
 File No. \_\_\_\_\_ Drawing No. \_\_\_\_\_  
 Date MAR. 28, 1962 Scale 1" = 500'

STATE OF WEST VIRGINIA  
 DEPARTMENT OF MINES  
 OIL AND GAS DIVISION  
 CHARLESTON

WELL LOCATION MAP  
 FILE NO. DOD-754

+ Denotes location of well on United States Topographic Maps, scale 1 to 62,500, latitude and longitude lines being represented by border lines as shown.

- Denotes one inch spaces on border line of original tracing.

56 3



STATE OF WEST VIRGINIA  
DEPARTMENT OF MINES  
OIL AND GAS DIVISION 3

Quadrangle Vadis

Permit No. DOD-754

WELL RECORD

Oil or Gas Well Gas  
(KIND)

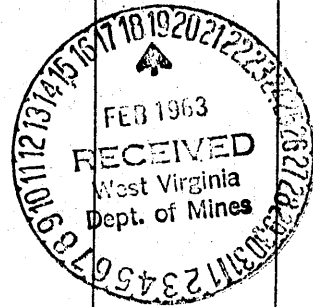
Company Murphy Oil Company of Pennsylvania  
Address West Union, West Virginia  
Farm Porter Maxwell Acres 14.00  
Location (waters) Lick Run Bluestone  
Well No. 47-A Elev. 1206  
District New Milton County Doddridge  
The surface of tract is owned in fee by R.L. Holland Address West Union, W. Va.  
Mineral rights are owned by Porter Maxwell, Heirs  
Raymond Maxwell, W. Va. Address Clarksburg, W. Va.  
Drilling commenced April 10, 1962  
Drilling completed May 20, 1962  
Date Shot 5/1962 From Gordon  
With 10" x 5" Shell 80# Goletin  
Open Flow 5 10ths Water in 2" Inch  
10 10ths Merc. in 1" Inch  
Volume 94,000 Cu. Ft.  
Rock Pressure 95# lbs. 12 hrs.  
Oil 20 Gal. per day bbls., 1st 24 hrs.  
WELL ACIDIZED 300 Gal. Mud Acid W/Frac.

Casing and Tubing	Used in Drilling	Left in Well	Packers
Size			Kind of Packer
16	Wood		
13 Conductor	12"	12"	
10	407"		Size of
8 3/4	1101"		
6 5/8 #17 in OD	2054"	2054"	Depth set
5 3/16			
3			Perf. top
2			Perf. bottom
Liners Used			Perf. top
	(See Logs)		Perf. bottom

CASING CEMENTED 7" SIZE 1700 No. Ft. 5/15/62 Date  
Dowell Cementing Service - 354  
S.O. # 99190 No Coal  
COAL WAS ENCOUNTERED AT 0 FEET 0 INCHES  
0 FEET 0 INCHES 0 FEET 0 INCHES  
0 FEET 0 INCHES 0 FEET 0 INCHES

WELL FRACTURED Lowell - 5/22/62 68,000 Gal. River-Frac. No. Service order  
" Blue Monday & Injun #95329  
RESULT AFTER TREATMENT Poor (all logs with records)  
ROCK PRESSURE AFTER TREATMENT 190# 190,000 Cu. Ft. Sept. 5/1962 - 15/10 x 2"  
Fresh Water 1 ONE Feet Salt Water 190# Feet 163,000

Formation	Color	Hard or Soft	Top	Bottom	Oil, Gas or Water	Depth	Remarks
Top Soil			0	5			
Blue Clay			5	15			
Slate			15	30			
Red Rock			30	50			
Sand Rock			50	60			
Red Rock			60	100			
Sand Rock			100	102			
Red Rock			102	120			
Slate			120	124			
Lime Shell			124	125			
Red Rock			125	150			
Sand			150	165			
Slate			165	173		Water	
Red Rock			173	208			
Lime			208	210			
Red Rock			210	231			
Slate - shells			231	265			
Red Rock			265	272			
Slate			272	277			
Lime	Pink		277	287			
Slate			287	300			
Red Rock			300	329			
Slate			329	334			
Red Rock			334	353			
Sand			353	405			
Lime	Hard		405	410			
Slate			410	421			
Sand			421	436			
Slate			436	449			
Red Rock			449	453			



Formation	Color	Hard or Soft	Top <sup>3</sup>	Bottom	Oil, Gas or Water	Depth Found	Remarks
Slate			453'	459'			
Red Rock			459	470			
Slate		Shells	470	500			
Lime			500	515			
Slate			515	522			
Lime-Pts.		Hard	522	540			
Slate			540	636			
Red Rock			636	640			
Sand			640	660			
Slate			660	672			
Pink Rock			672	756			
Slate			756	761			
Lime		Hard-Gritty	761	771			
Slate			771	785			
Pink Rock			785	800			
Lime			800	835			
Slate		Hard	835	862			
Lime			862	872			
Slate			872	890			
Pink Rock			890	895			
Lime		Gritty	895	905			
Pink Rock			905	912			
Slate			912	926			
Sand	Black & white		926	950			
Slate	Shells		950	985			
Lime		Gritty	985	1000			
Slate			1000	1026			
Lime	Gritty		1026	1036			
Slate			1036	1058			
Sand			1058	1075			
Lime			1075	1125			
Slate			1125	1162			
Sand, Salt#1		Hard	1162	1225			
Slate			1225	1242			
Sand			1242	1252			
Slate			1252	1318			
Sand			1318	1324			
Slate			1324	1350			
Sand-Salt#2		Hard	1350	1402			
Slate			1402	1407			
Sand			1407	1430			
Slate		Shells	1430	1570			
Sand-Salt#3			1570	1670			Gas-1621-1626
Slate			1670	1682			
Sand			1682	1693			
Slate			1693	1825			
Lime-Little		Hard	1825	1850			Oil-Show
Sand-Blue Monday		Hard	1850	1875			Gas & Oil
F.Cave			1875	1876			
B.Lime			1876	1939			Gas 1878-83
Sand			1939	1994			
Break			1994	1998			
Sand			1998	2010			Gas-2000'-10
Slate			2010	2050			
Slate			2050	2172			
Sand			2172	2294			
Slate			2294	2372			
Sand B.Grit			2372	2382			
Slate			2382	2470			
Lime			2470	2490			
Slate			2490	2574			Gas-2000'-10
Sand Gordon & Stray			2574	2587			Gas & Oil
Break & Stray		T.D.		2613			2615'

James P. Droppleman  
Dec. 1962

Date Dec. 21, 1962, 19

APPROVED James P. Droppleman Oil Company of Penna., Owner

By James P. Droppleman (Title) Supt.