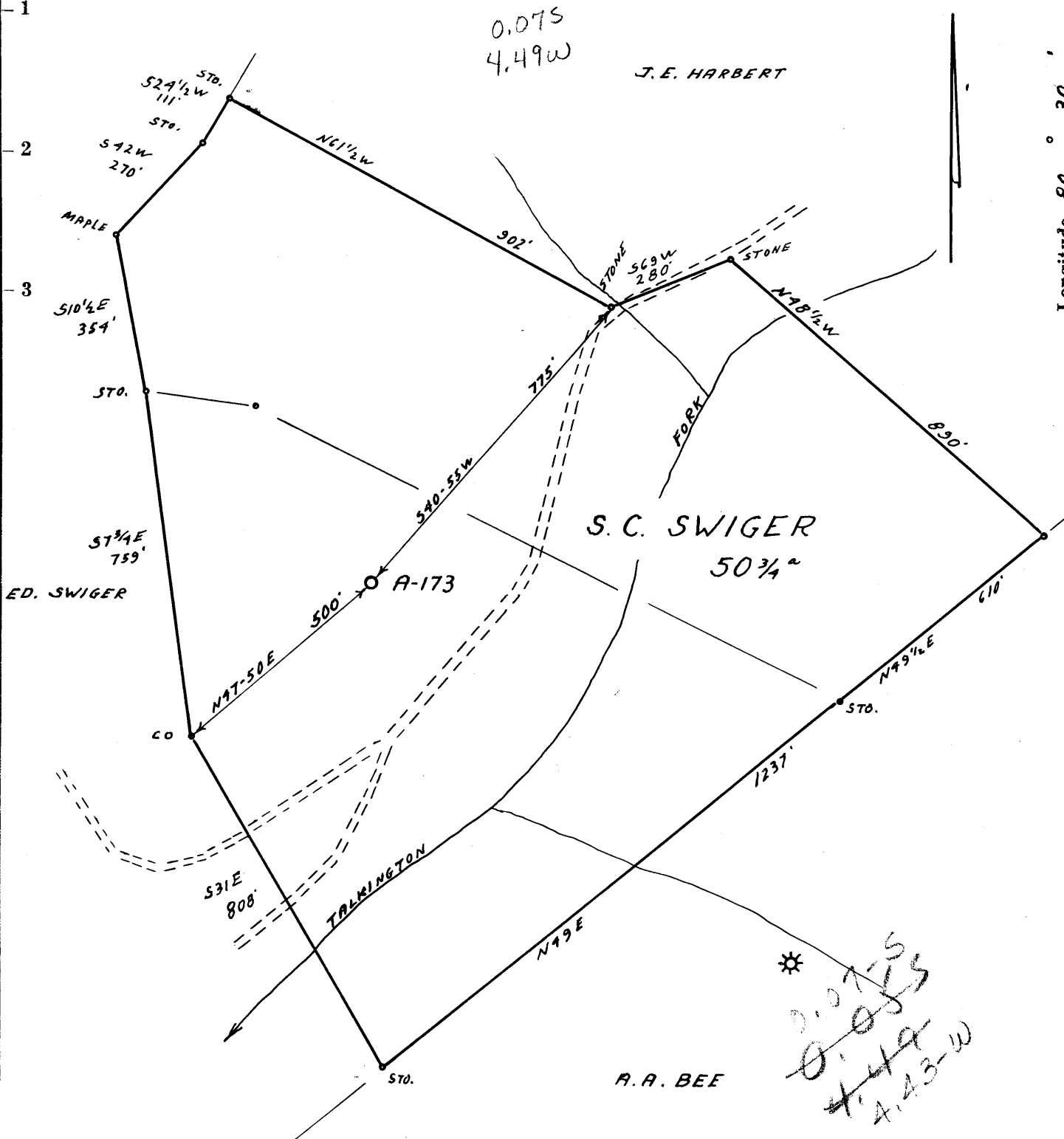


Latitude 39 ° 25 '

Longitude 80 ° 30 '



- Redrill.....
- New Location.
- Drill Deeper.....
- Abandonment.....

Company ALLEGHENY LAND & MINERAL CO.  
 Address CLARKSBURG, W.VA.  
 Farm S. C. SWIGER  
 Tract \_\_\_\_\_ Acres 50 3/4 Lease No. \_\_\_\_\_  
 Well (Farm) No. 1 Serial No. A-173  
 Elevation (Spirit Level) 1038' V.A.  
 Quadrangle CENTERPOINT EC  
 County DODDRIDGE District M'CLELLAN  
 Engineer James D. Guffin  
 Engineer's Registration No. 1084  
 File No. 204/60 Drawing No. \_\_\_\_\_  
 Date 4-14-62 Scale 1" = 300'

STATE OF WEST VIRGINIA  
 DEPARTMENT OF MINES  
 OIL AND GAS DIVISION  
 CHARLESTON

**WELL LOCATION MAP**  
 FILE NO. Doo-772

+ Denotes location of well on United States Topographic Maps, scale 1 to 62,500, latitude and longitude lines being represented by border lines as shown.  
 — Denotes one inch spaces on border line of original tracing.

RDME



STATE OF WEST VIRGINIA  
DEPARTMENT OF MINES  
OIL AND GAS DIVISION //

Centerpoint  
Quadrangle Centerpoint

WELL RECORD

Permit No. Dod-772

Oil or Gas Well Gas  
(KIND)

Company Allegheny Land & Mineral Company  
Address Clarksburg, W.Va.  
Farm S.C. Swiger Acres 50.75  
Location (waters) \_\_\_\_\_  
Well No. A-173 Elev. 1038  
District McClellan County Doddridge  
The surface of tract is owned in fee by \_\_\_\_\_  
Address \_\_\_\_\_  
Mineral rights are owned by \_\_\_\_\_  
Address \_\_\_\_\_  
Drilling commenced May 8, 1962  
Drilling completed June 4, 1962  
Date Shot \_\_\_\_\_ From \_\_\_\_\_ To \_\_\_\_\_  
With \_\_\_\_\_  
Open Flow 100 /10ths Water in 2" Inch  
/10ths Merc. in \_\_\_\_\_ Inch  
Volume 421,000 Cu. Ft.  
Rock Pressure 120 lbs. 48 hrs.  
Oil \_\_\_\_\_ bbls., 1st 24 hrs.  
WELL ACIDIZED \_\_\_\_\_

Casing and Tubing	Used in Drilling	Left in Well	Packers
Size			Kind of Packer
16	19'	19'	
13			
10	355'		Size of
8 3/4	1197'		
6 3/8			Depth set
5 3/4	2126'	2126'	
3			Perf. top <u>2086</u>
2			Perf. bottom <u>2087</u>
Liners Used			Perf. top <u>6 holes</u>
			Perf. bottom _____

CASING CEMENTED 4 1/2" SIZE 413 No. Ft. 6-5-62 Date  
85 cement, 40 baroid, 6 aquajel, 1 lime  
DOWELL  
COAL WAS ENCOUNTERED AT \_\_\_\_\_ FEET \_\_\_\_\_ INCHES  
\_\_\_\_\_ FEET \_\_\_\_\_ INCHES FEET \_\_\_\_\_ INCHES  
\_\_\_\_\_ FEET \_\_\_\_\_ INCHES FEET \_\_\_\_\_ INCHES

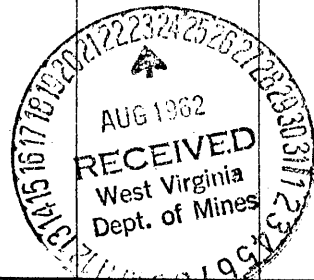
WELL FRACTURED June 13, 1962 By Dowell- Water, sand, acid

RESULT AFTER TREATMENT 10/10 Merc. 2" 492 M

ROCK PRESSURE AFTER TREATMENT 125# 14 hour

Fresh Water hole full Feet 150 Salt Water 2 bailer per hr. Feet 1405

Formation	Color	Hard or Soft	Top	Bottom	Oil, Gas or Water	Depth	Remarks
Red Rock			0	5			
Rock			5	20			
Red Rock			20	30			
Rock			30	45			
Red Rock			45	60			
Sand			60	105			
Slate & shells			105	120			
Black slate			120	142	Fresh Water	150	Hole full
Lime			142	155			
Sand			155	192			
Slate & shells			192	227			
Red Rock			227	250			
Slate & shells			250	306			
Sand			306	354			
Slate			354	400			
Lime			400	505			
Slate & shells			505	625			
Sand			625	645			
Slate & shells			645	755			
Sand			755	775			
Slate			775	800			
Red Rock			800	805			
Slate			805	815			
Sand			815	835			
Pink Rock			835	850			
Red Lime			850	860			
Red Rock			860	905			
Slate			905	950			
Red Rock			950	985			
Slate			985	990			



Formation	Color	Hard or Soft	Top //	Bottom	Oil, Gas or Water	Depth Found	Remarks
Pink Rock			990	1002			
Lime			1002	1016			
Slate	White		1016	1030			
Slate	black		1030	1035			
Sand			1035	1060			
Slate	black		1060	1070			
Sand			1070	1098			
Slate	black		1098	1145			
Slate & shells			1145	1190			
Lime			1190	1297			
Sand			1297	1360			
Slate & shells			1360	1385			
Sand			1385	1417	Water	1405	2-- 8" bailer per hour
Slate & shells			1417	1430	Salty		
Sand			1430	1465			
Slate & shells			1465	1495			
Sand			1495	1515			
Slate			1515	1535			
Sand			1535	1585			
Slate	black		1585	1640			
Slate & shells			1640	1680			
Sand			1680	1715			
Slate	black		1715	1727			
Slate & shells			1727	1742			
Lime	dark		1742	1770			
Slate			1770	1790			
Red Rock			1790	1806			
Lime shell			1806	1813			
Red Rock			1813	1855			
Red Lime		hard	1855	1875			
Slate			1875	1884			
Little Lime			1884	1896			
Pencil Cave			1896	1915			
Big Lime			1915	1980			
Injun			1980	2005			
Break			2005	2010			
Injun			2010	2028	Oil	2025	Show
Break			2028	2032			
Injun			2032	2096	Gas	2068-2085	100/10 W 2" 421 M
Slate			2096	2126			
Total depth			<del>2126</del>	2126			

Date June 20, 19 62

APPROVED Allegheny Land & Mineral Co., Owner

By Claron Dawson, Mahone, W.Va.  
(Title)