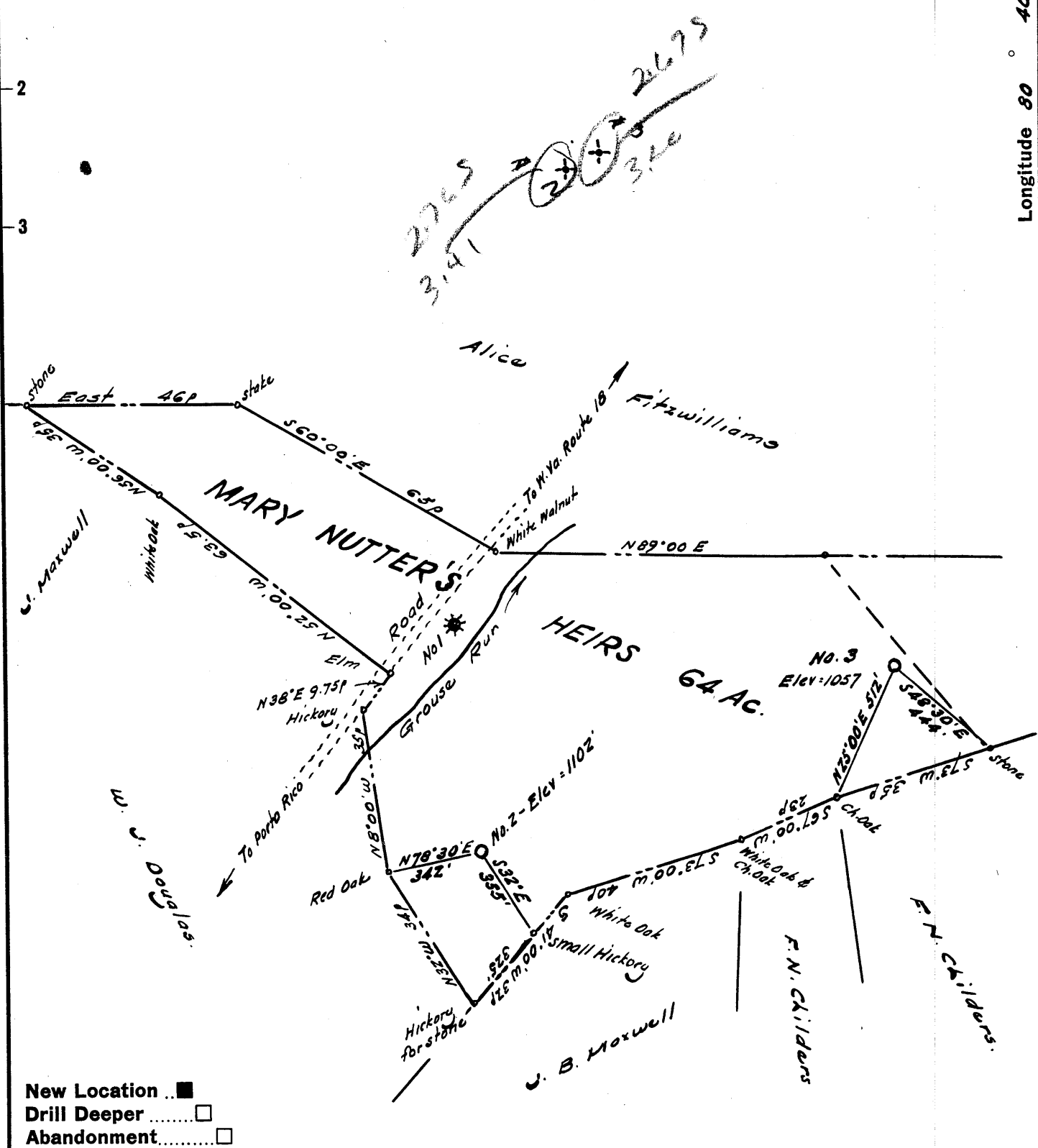


Latitude 39° 15'

Longitude 80° 40'



New Location
 Drill Deeper
 Abandonment

Company **TRIO OIL & GAS CO.**
 Address West Union, West Va.
 Farm Mary Nutters Heirs
 Tract _____ Acres 64 Lease No. _____
 Well (Farm) No. Two & Three Serial No. _____
 Elevation (Spirit Level) No. 2 - 1102 No. 3 - 1057
 Quadrangle Vadis NW
 County Doddridge District New Milton
 Engineer [Signature]
 Engineer's Registration No. 1227
 File No. _____ Drawing No. _____
 Date May 1962 Scale 1" = 30p

STATE OF WEST VIRGINIA
 DEPARTMENT OF MINES
 OIL AND GAS DIVISION
 CHARLESTON

WELL LOCATION MAP
 FILE NO. Dod - 797 - #2-P
Dod - 798 - #3-TCF

+ Denotes location of well on United States Topographic Maps, scale 1 to 62,500, latitude and longitude lines being represented by border lines as shown.
 - Denotes one inch spaces on border line of original tracing.



STATE OF WEST VIRGINIA
DEPARTMENT OF MINES
OIL AND GAS DIVISION 3

Quadrangle Vadis

Permit No. DOD 798

WELL RECORD

Oil or Gas Well combination
(KIND)

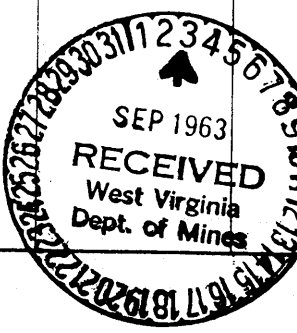
Company Trio Oil and Gas Co., Inc
Address Box 264, West Union, W.Va.
Farm Mary Nutter Hrs Acres 64
Location (waters) Grouse Run
Well No. 3 Elev. 1057
District New Milton County Doddridge
The surface of tract is owned in fee by Same
West Union, W.Va. address
Mineral rights are owned by same
Address
Drilling commenced 1/14/63
Drilling completed 2/11/63
Date Shot From To
With
Open Flow /10ths Water in Inch
/10ths Merc. in Inch
Volume show Cu. Ft.
Rock Pressure 650 lbs. 24 hrs.
Oil show bbls., 1st 24 hrs.
WELL ACIDIZED
WELL FRACTURED yes

Casing and Tubing	Used in Drilling	Left in Well	Packers
Size			Kind of Packer
16	<u>23'</u>	<u>all</u>	
13			
10	<u>261'</u>	<u>none</u>	Size of
8 1/4	<u>1185'</u>	<u>none</u>	
6 3/8			Depth set
5 3/16	<u>2235'</u>	<u>all</u>	
3			Perf. top
2			Perf. bottom
Liners Used			Perf. top
			Perf. bottom

CASING CEMENTED 5 1/2 SIZE 500' No. Ft. Date
Garaton Service, Jane Lew, West, Va.
75 sks. cement, 7 sks. aquagel
COAL WAS ENCOUNTERED AT none FEET INCHES
FEET INCHES FEET INCHES
FEET INCHES FEET INCHES

RESULT AFTER TREATMENT 40 bbl per day oil , approximately 500000 mcf gas
ROCK PRESSURE AFTER TREATMENT 780#
Fresh Water 260 to 290 Feet Salt Water none Feet

Formation	Color	Hard or Soft	Top	Bottom	Oil, Gas or Water	Depth	Remarks
Red clay			0	40		40	
Shale			40	100		60	
Red & Gray shale			100	120		20	
Black Slate			120	137		17	
Shale			137	169		32	
Red shale			169	195		26	
Gray & Red shake mixed			195	247		52	
Shale Gray			247	250		3	
Sand			250	301		51	
Red Shale			301	315		14	
Sand			315	330		15	
red rock			330	365		35	
Shake hard			365	412		47	
red rock			412	490		78	
sand			490	564		74	
shale			564	650		86	
lime			650	670		20	
Gray & red shake			670	703		30	
shale			703	740		37	
sand			740	760		20	
shale gray			760	772		12	
red shale			772	782		10	
red shale			782	830		48	
shale & sand			830	860		30	
sand			860	874		14	
red shale			874	886		12	
sand			886	900		14	
gray shale			900	920		20	
red shale			920	955		15	



Formation	Color	Hard or Soft	Top 3	Bottom	Oil, Gas or Water	Depth Found	Remarks
gray shale			955	970		35	
slate			970	995		25	
lime gray			995	1010		15	
red shale			1010	1045		35	
shale gray			1045	1080		35	
red shale			1080	1100		20	
gray shale			1100	1150		50	
Red & gray shale			1150	1183		33	
lime gray			1183	1225		42	
shale			1225	1295		70	
sand			1295	1330		35	
sand broken			1330	1345		15	
sand			1345	1370		25	
Slate & shells			1370	1466		96	
sand			1466	1530		64	
slate			1530	1640		110	
gray shale			1640	1695		55	
sand			1695	1790		95	
black shale			1790	1880		90	
slate & shells			1880	1897		17	
red rock			1897	1950		53	
gray shale			1950	1968		18	
red lime			1968	1975		7	
lime			1975	1997		22	
Blue monday			1997	2023	show oil	26	
lime			2023	2070		47	
Big injun sand			2070	2170	show gas	100	
shale			2170	2235	show oil	65	

Date August 24, 1963, 19

APPROVED Trio Oil and Gas Co., Inc, Own

By Charles J. ...
(Title)